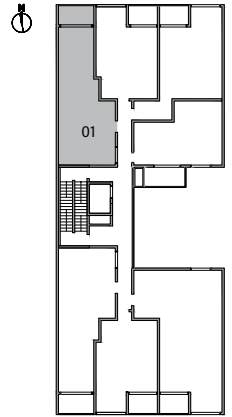
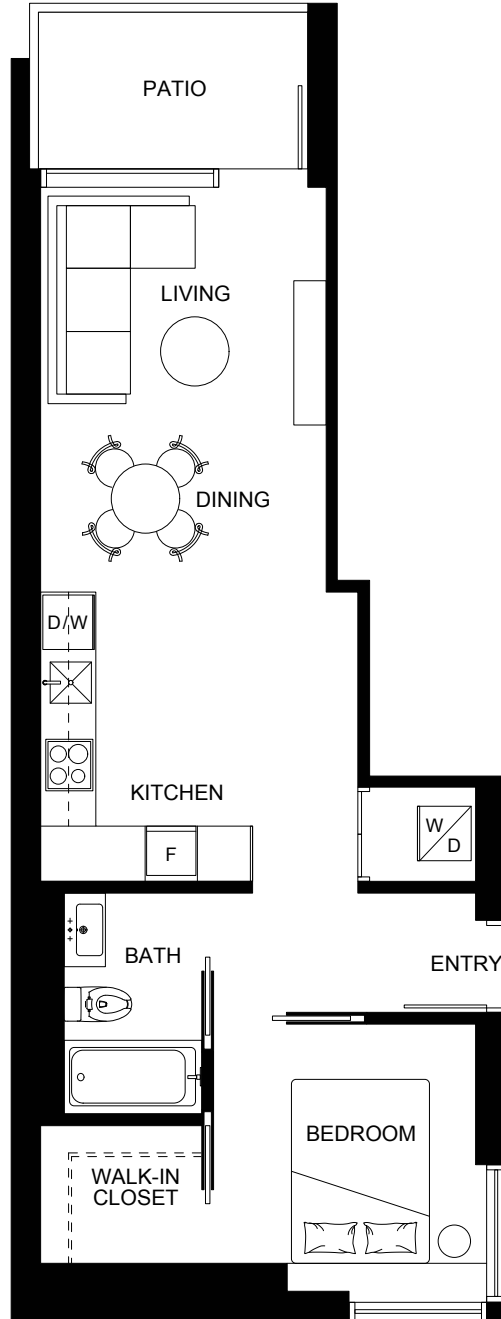




### N1 - 1 BED

Interior: 577 sq.ft.

Outdoor: 61 sq.ft.



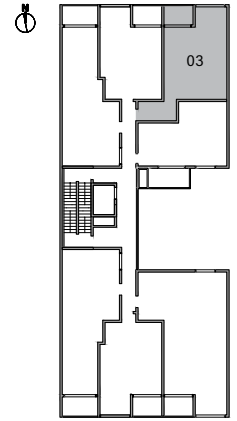
FLOOR 5, 6, 7



### N3 - 1 BED

Interior: 539 sq.ft.

Outdoor: 48 sq.ft.



FLOOR 5, 6, 7

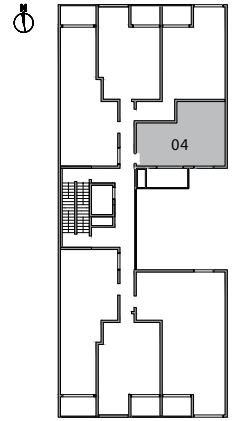




### N4 - 1 BED

Interior: 437 sq.ft.

Outdoor: 72 sq.ft.



FLOOR 5, 6, 7



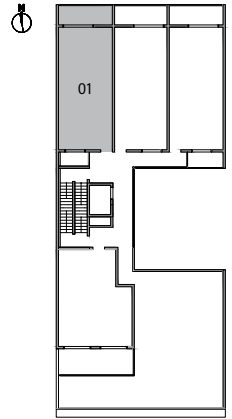


### N5 - 3 BED

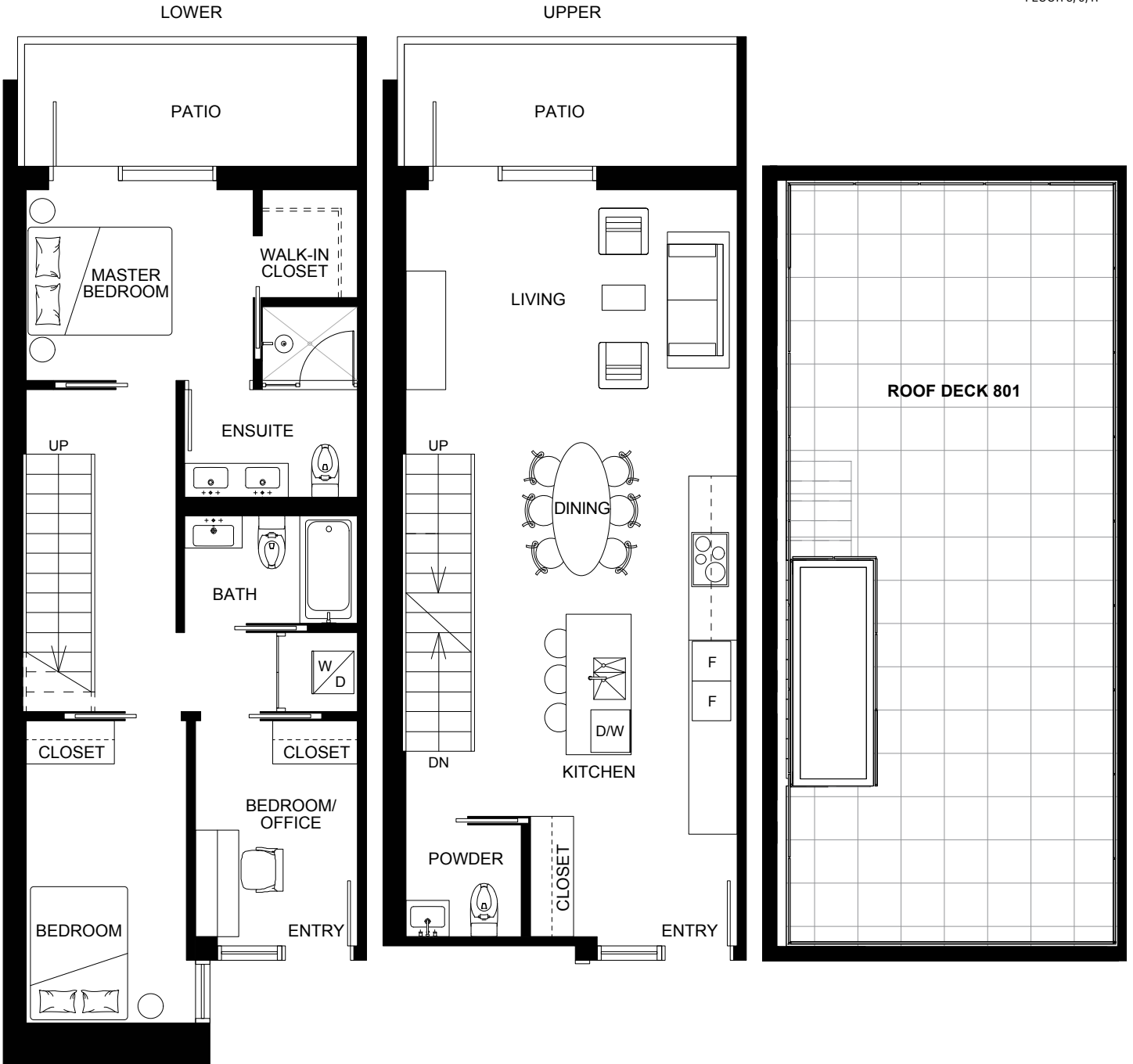
Interior: 1211 sq.ft.

Outdoor: 95 sq.ft. (Upper & Lower Patio)

Roof Deck: 567 sq.ft.



FLOOR 8, 9, R



In our continuing effort to improve and maintain the high standard of The Sparrow development, the developer reserves the right to modify or change plans, specifications, features and prices without notice. Materials may be substituted with equivalent or better at the developer's sole discretion. All dimensions and sizes are approximate and are based on architectural measurements. As reverse and/or mirrored plans occur throughout the development please see architectural plans for exact unit layout if material to your decision to purchase. Please ask one of the helpful sales staff to reference the architectural set of construction drawings for most accurate dimensions and other details. Please refer to disclosure statement for specific offering details. E. & O. E.

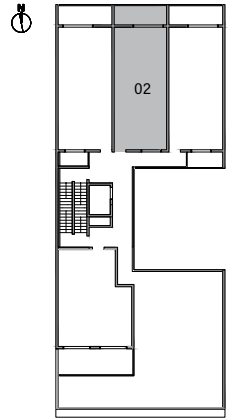


**N6 - 3 BED**

Interior: 1137 sq.ft.

Outdoor: 92 sq.ft. (Upper & Lower Patio)

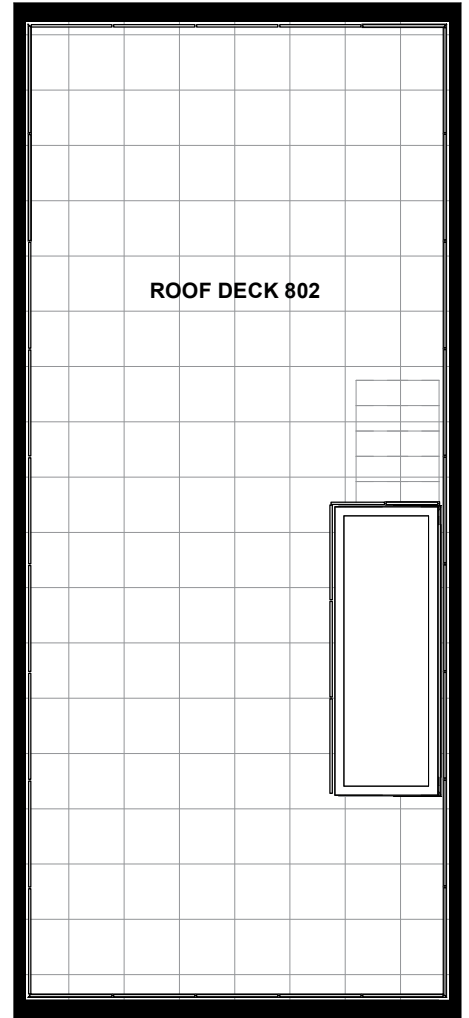
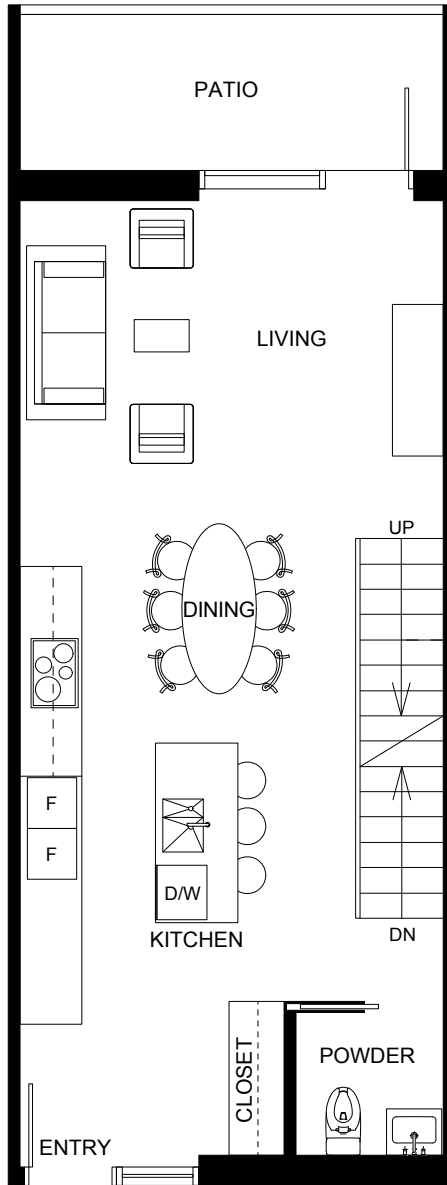
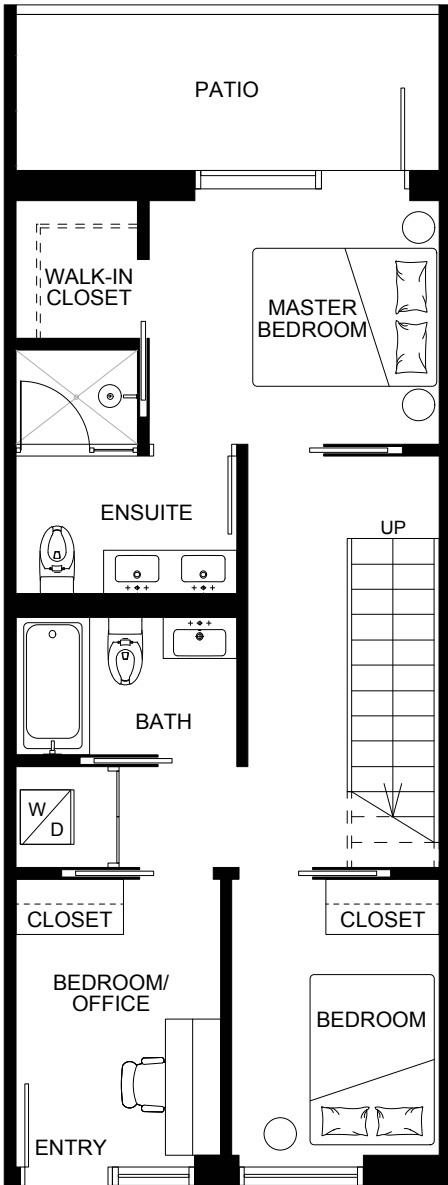
Roof Deck: 552 sq.ft.



FLOOR 8, 9, R

LOWER

UPPER



In our continuing effort to improve and maintain the high standard of The Sparrow development, the developer reserves the right to modify or change plans, specifications, features and prices without notice. Materials may be substituted with equivalent or better at the developer's sole discretion. All dimensions and sizes are approximate and are based on architectural measurements. As reverse and/or mirrored plans occur throughout the development please see architectural plans for exact unit layout if material to your decision to purchase. Please ask one of the helpful sales staff to reference the architectural set of construction drawings for most accurate dimensions and other details. Please refer to disclosure statement for specific offering details. E. & O. E.