

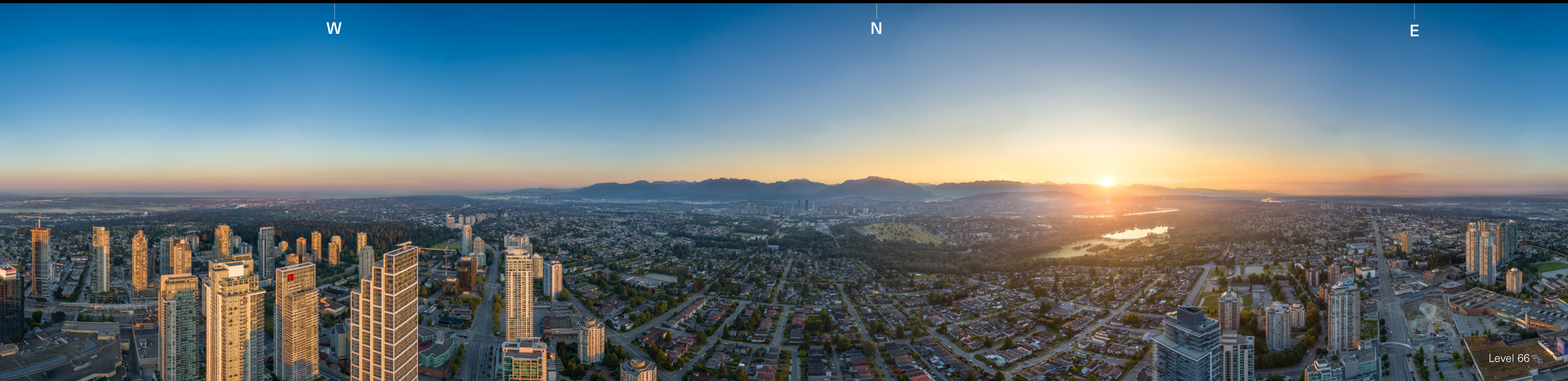
CITIZEN

OF METROTOWN



Where City Meets Zen.





Level 66

SkyHomes Elevate Your Outlook.

66 Extraordinary
storeys

SkyHome Residences
Level 32 and Up

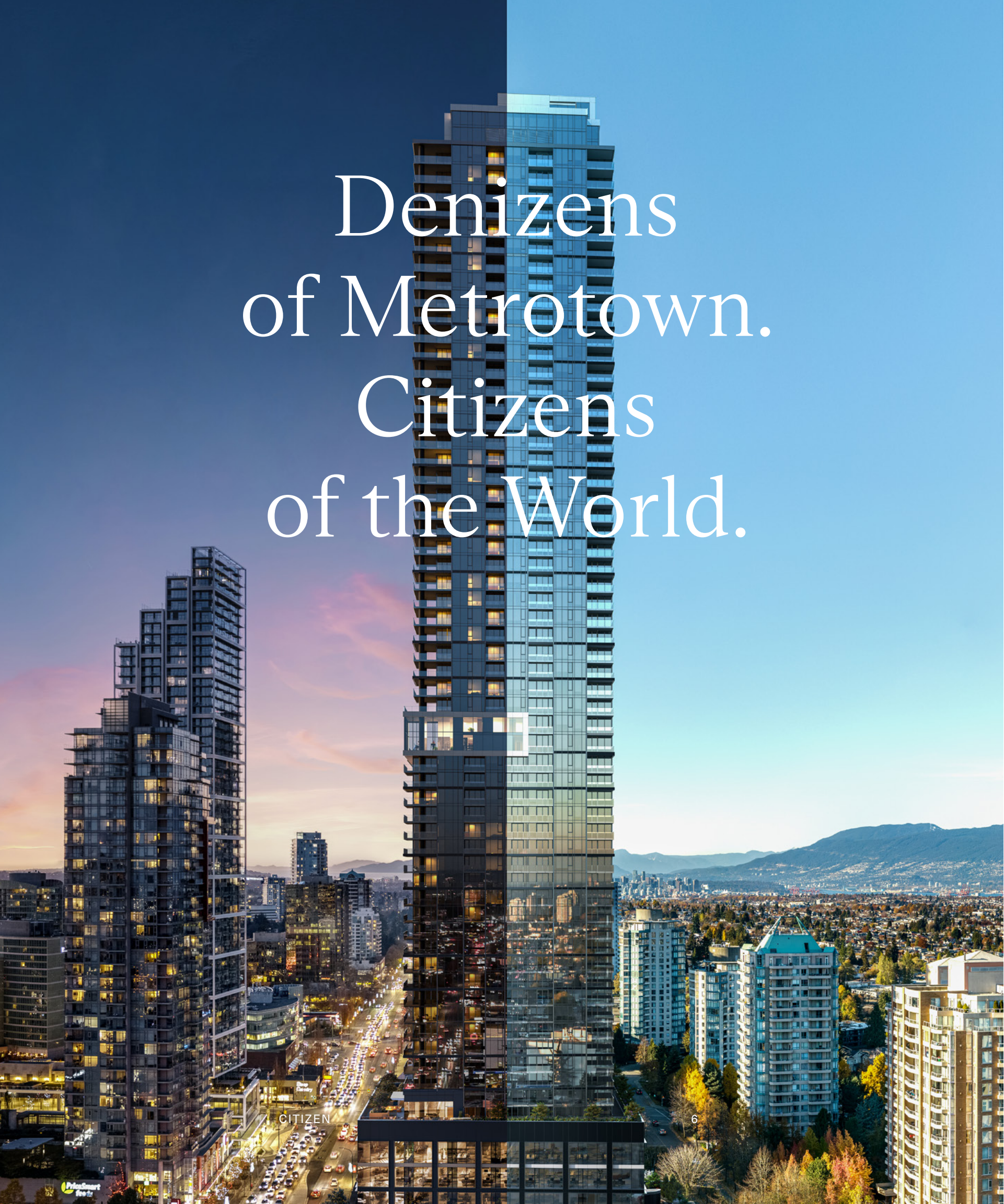
Over 40,000 sf of
Amenities

Rental Homes

Podium Level Office

Restaurant & Cafes

Denizens of Metrotown. Citizens of the World.



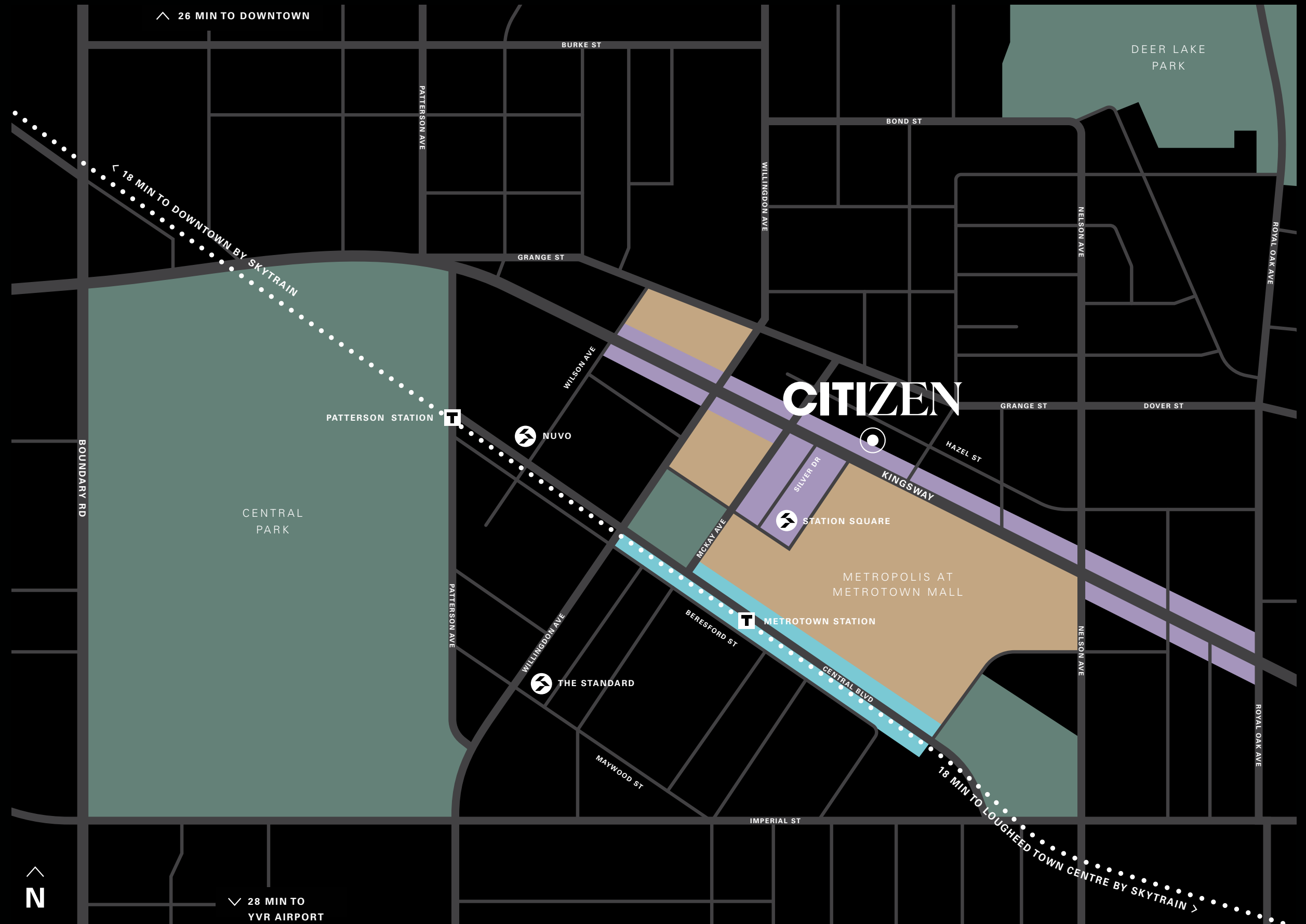
Soaring Above the City's Skyline.

With residences that start on the 32nd floor of the tallest building in the province, each home has the best view in town—sweeping vistas over sparkling city lights, to mountains, soaring skies, and the city's perimeter at the water's edge.

At the Core of Metrotown.

Designed as a significant hub of metropolitan activity. Destined for thriving urban excellence. Defined by this very moment.

- PARKS & RECREATION
- RESTAURANT ROW
- SHOPPING, ENTERTAINMENT & CULTURE DISTRICT
- FUTURE GROWTH





Lobby



Private dining room, bar & lounge
Views over Metro Vancouver

Level 66 Sky Lounge

You Have Arrived.

It's your city, and this is your home. You can sense it on arrival, and that feeling only grows.



A Balance of Beauty & Function.



Beauty finely tuned to create calm.
Spaces beautifully conceived to create
a private sense of sanctuary, made
individually distinct by each inhabitant.



THE CITY'S MOST SOUGHT-AFTER DESIGN

“Our intent is to design at the intersection of impact and nuance, giving equal weight to commercial realities and world-building.” —Ste. Marie Design

Metrotown's Tallest Tower

- + A world-class community monument standing tall as the beacon of Metrotown
- + Designed by CDA Architects
- + 372 Urban Townhomes and City SkyHomes ranging from studio to 3-bedroom homes
- + Approximately 150,000 sf of AAA class office space
- + Nearly 5,000 sf of ground-level retail
- + Stunning double-height lobby filled with lush silk planting and abundant daylight
- + Public art pieces by internationally acclaimed artists Soo Sunny Park and Ben Reeves

Visionary Interiors

- + Urban sophistication by world-renowned interior design visionaries Ste. Marie Design
- + City and Zen colour scheme options to choose from
- + City SkyHomes from levels 32 to 65 enjoy immense panoramic views of Metro Vancouver
- + Contemporary laminate wood flooring runs through living areas and bedrooms
- + Roller-blind window coverings control light and privacy
- + Spacious living areas feature approximately 9' ceilings
- + Front-loading stacked washer and dryer
- + Central air cooling and heating for year-round comfort
- + Convenient tech niche for device storage and charging

**studio & 1-bed homes feature 24" appliances, 2-bed+ homes feature 30" appliances*

Stunning Kitchens

- + European-inspired soft-close laminate cabinets with premium recessed pulls and under-cabinet LED lighting
- + Single-slab engineered quartz backsplash and countertop
- + Undermount stainless steel sink with polished chrome faucet
- + Integrated dining table extension with complementing quartz countertops (select homes)
- + High-efficiency European pullout hood fan
- + Panasonic microwave with trim kit (2 & 3-bed homes)
- + Top-of-the-line Bosch integrated appliance package* featuring:
 - Gas cooktop
 - Speed oven (studio & 1-bed homes)
 - Electric convection wall oven (2 & 3-bed homes)
 - Integrated fridge with bottom-mount freezer
 - 24" integrated dishwasher

Zen Bathrooms

- + Soft-close millwork laminate vanity
- + Serene large-format porcelain wall and floor tile
- + Elegant engineered quartz countertop and backsplash
- + Deep soaker tub in 2nd and 3rd bathrooms
- + Laufen dual-flush toilet
- + Sophisticated primary bathrooms & ensuites feature:
 - Walk-in shower with glass enclosure and tiled niche
 - Rainfall shower and shower wand combo
 - Custom millwork medicine cabinet with integrated lighting

Zen City Resident's Retreat

- + Over 10,000 sf of indoor and outdoor amenity spaces for SkyHome & Urban Townhome residents to enjoy

LEVEL 32-33 WELLNESS & LIFESTYLE

- + Entertainment lounge
- + Outdoor fireside lounges
- + Fully equipped modern gym with sauna
- + Yoga, Pilates and dance studio
- + Child's play centre for year-round fun
- + Family room
- + Guest suite

LEVEL 66 SKY LOUNGE

- + Sweeping views of Metro Vancouver
- + Sky Bar
- + Lounge
- + Night sky observatory
- + Stately private dining room with catering kitchen

PETS, BIKES & PARCELS

- + Interconnected lobby with parcel storage
- + Bike-repair stations
- + Pet spa at entry level

PEACE OF MIND

- + 2-5-10 New Home Warranty
- + 24-hour concierge
- + Secure building entry system with entry phone, security cameras and key fob entry
- + Connection for EV charger installation
- + Secure bicycle storage
- + 3 designated elevators for SkyHome Residences' use only with additional dedicated elevator for Urban Townhome residents
- + Expertly developed and built by Anthem
- + Industry-leading Homeowner Care provided by Anthem

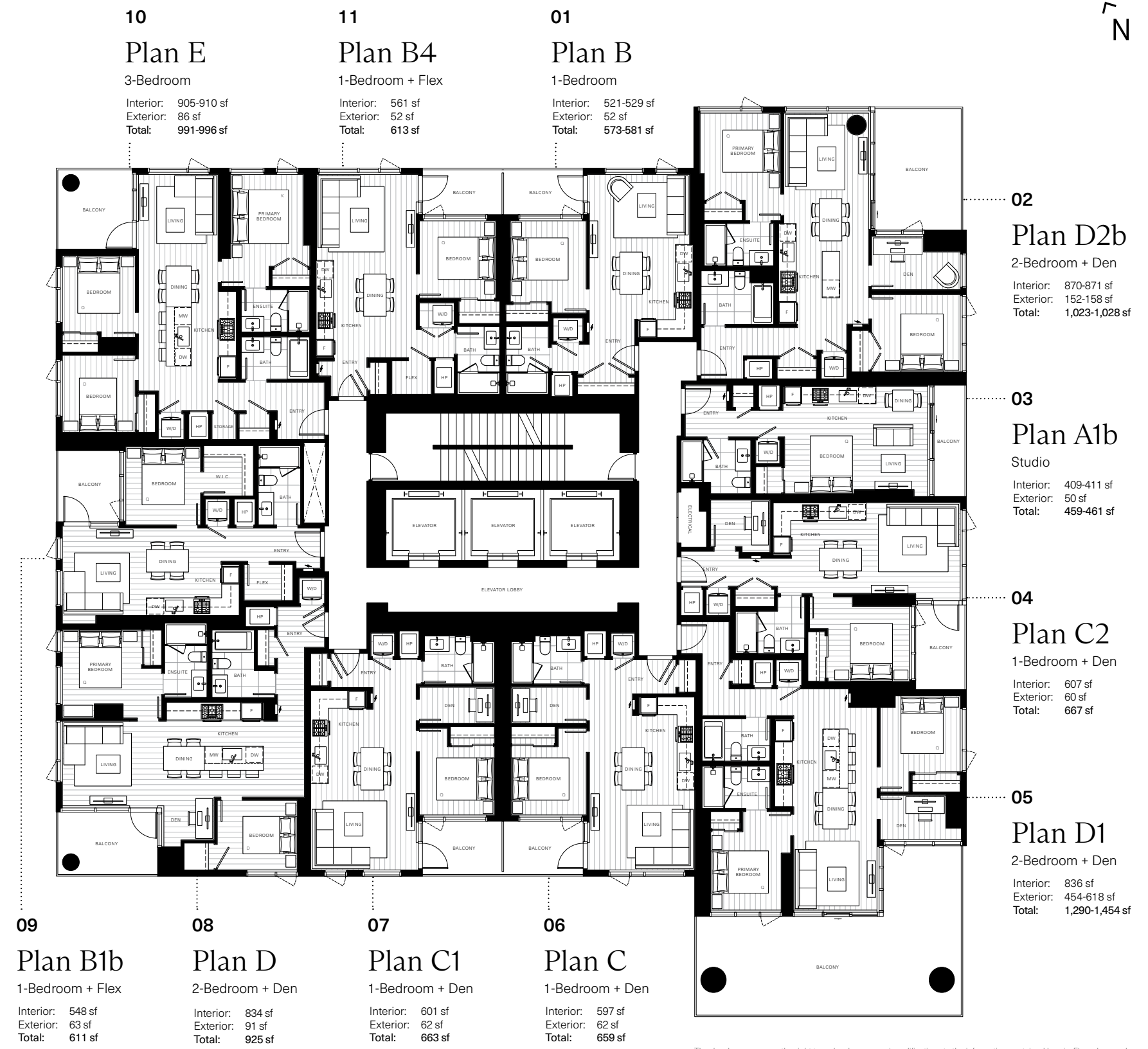
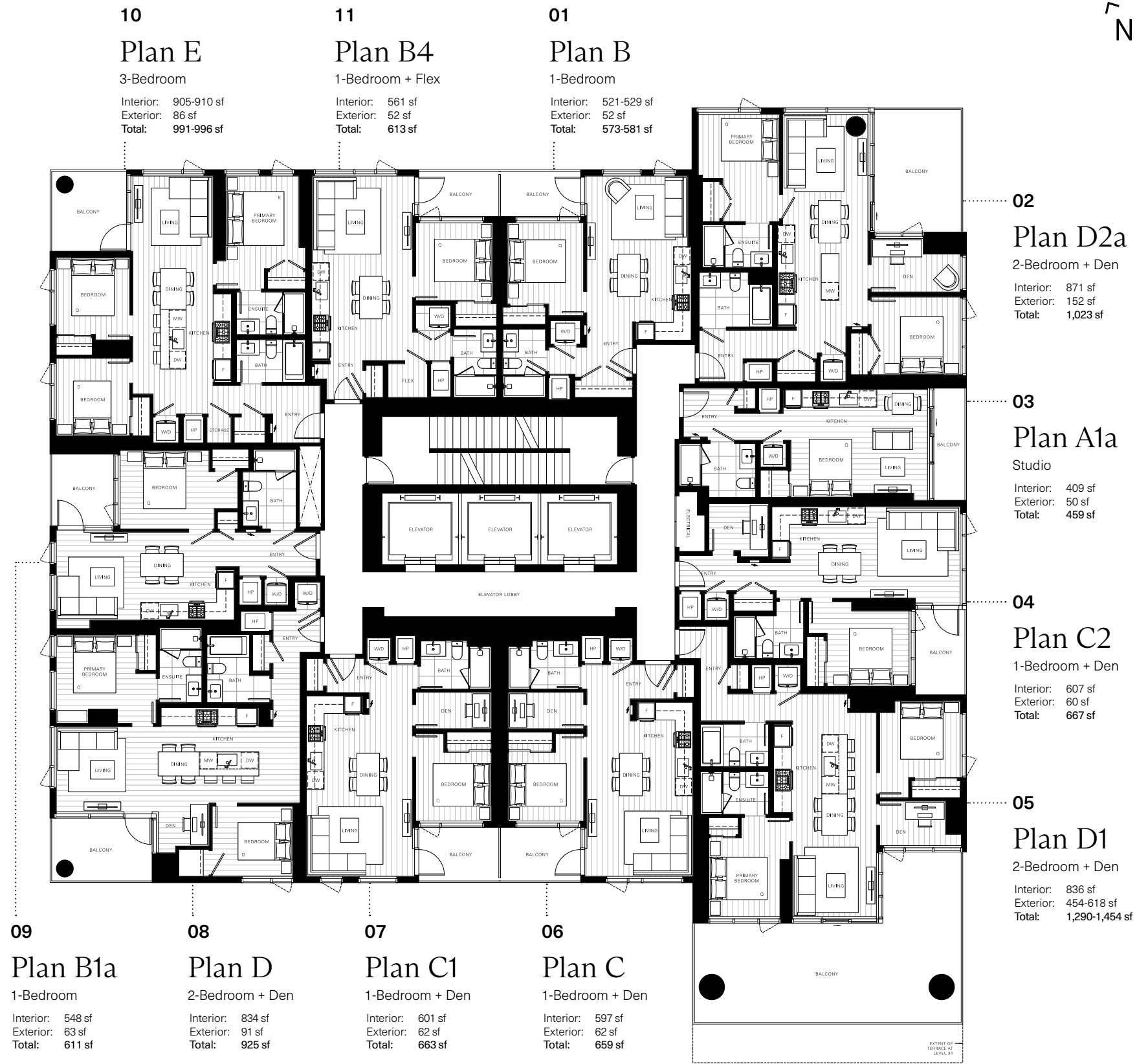
The developer reserves the right to make changes and modifications to the information contained herein without notice. Final design, construction, features, finishes, brands, materials, floor plans, and layouts may be altered by the developer. Please contact a developer sales representative for details. E.&O.E.



We start
where
others end.

Levels 34-58

Levels 59-65

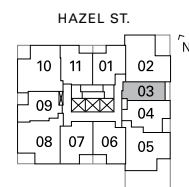
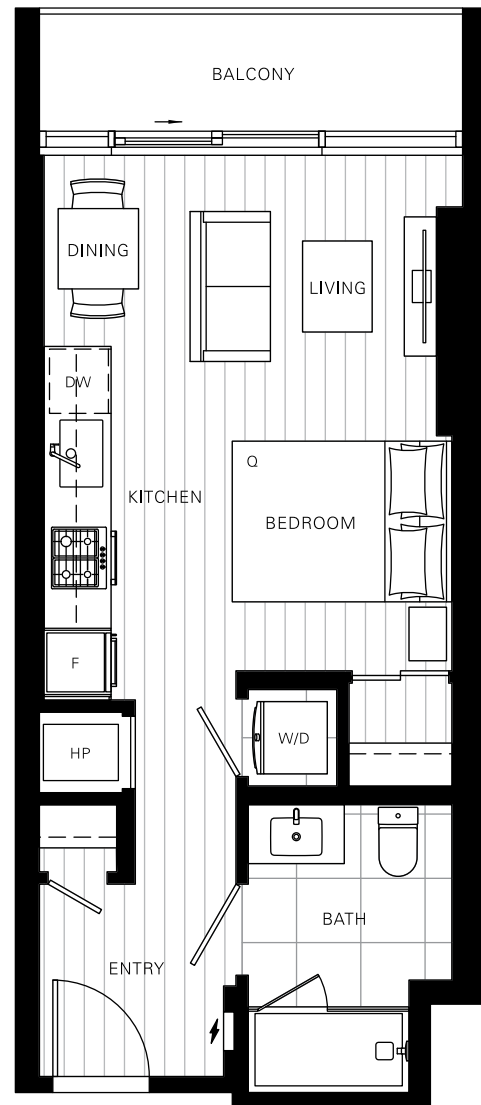


The developer reserves the right to make changes and modifications to the information contained herein. Floorplans and floorplates are subject to change without notice. Please contact a developer sales representative for details. This is not an offering for sale, as an offering can only be made after the filing of a disclosure statement, and only in jurisdictions where qualified in accordance with applicable local laws. E.&O.E.

Plan A1a

Studio

Interior: 409 sf
 Exterior: 50 sf
 Total: 459 sf



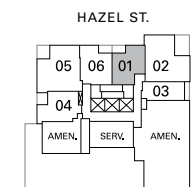
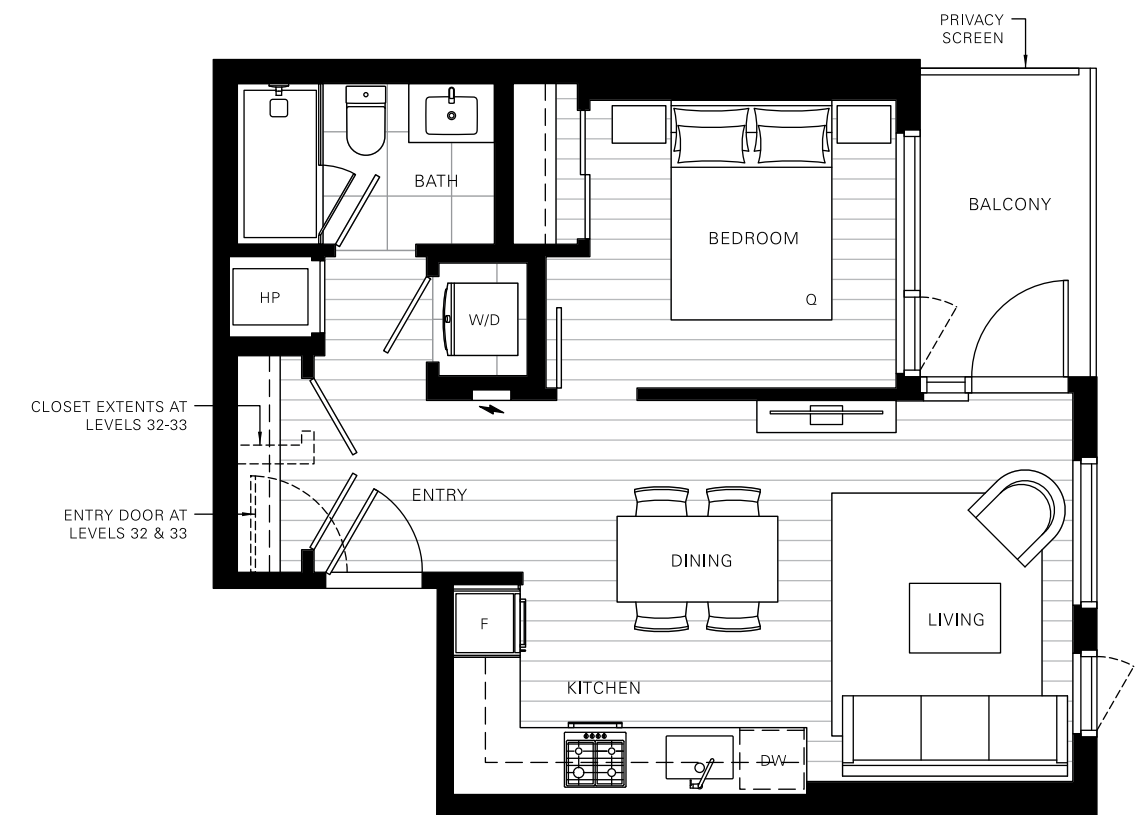
Levels 34-58

The developer reserves the right to make changes and modifications to the information contained herein. Floorplans and floorplates are subject to change without notice. Please contact a developer sales representative for details. This is not an offering for sale, as an offering can only be made after the filing of a disclosure statement, and only in jurisdictions where qualified in accordance with applicable local laws. E.&O.E.

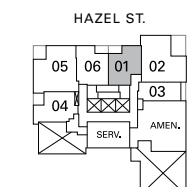
Plan B

1-Bedroom

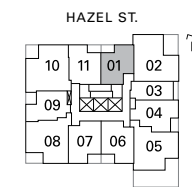
Interior: 521-529 sf
 Exterior: 52 sf
 Total: 573-581 sf



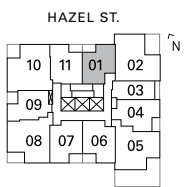
Level 32



Level 33



Levels 34-58

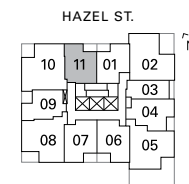
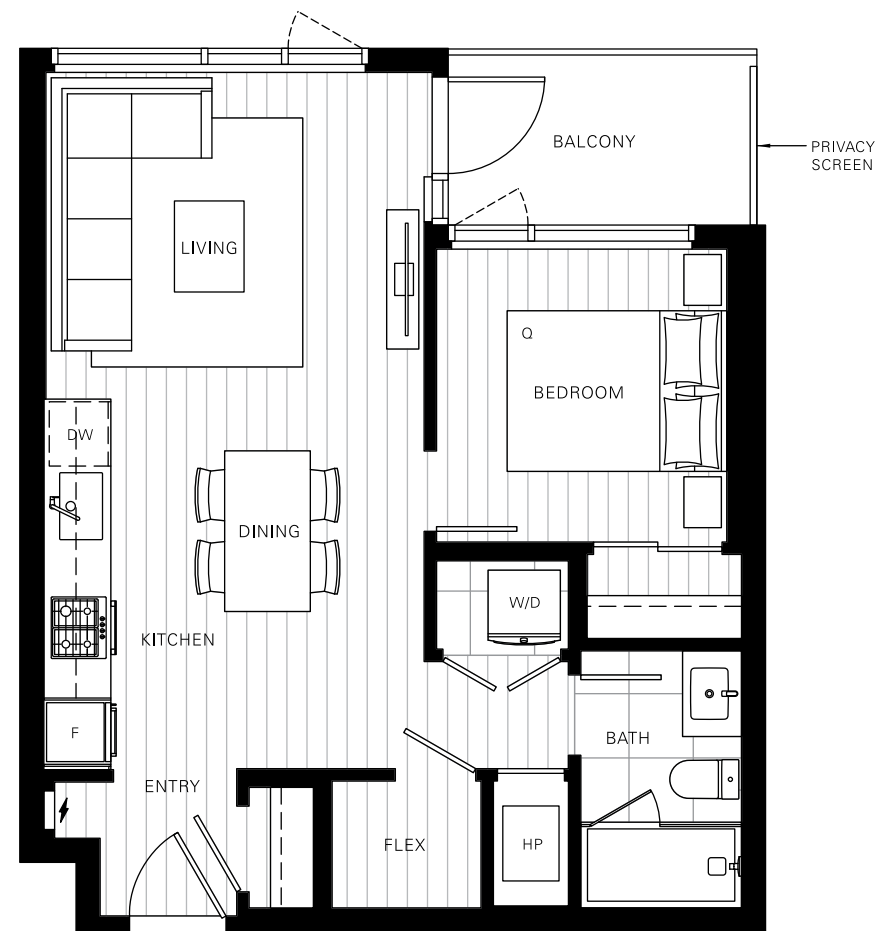


Levels 59-65

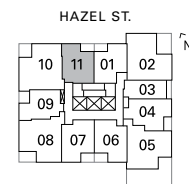
Plan B4

1-Bedroom + Flex

Interior: 561 sf
 Exterior: 52 sf
 Total: 613 sf



KINGSWAY
 Levels 34-58



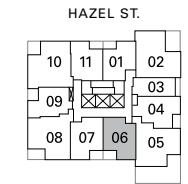
KINGSWAY
 Levels 59-65

The developer reserves the right to make changes and modifications to the information contained herein. Floorplans and floorplates are subject to change without notice. Please contact a developer sales representative for details. This is not an offering for sale, as an offering can only be made after the filing of a disclosure statement, and only in jurisdictions where qualified in accordance with applicable local laws. E.&O.E.

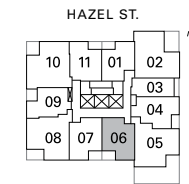
Plan C

1-Bedroom + Den

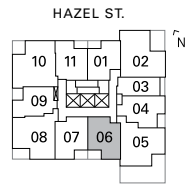
Interior: 597 sf
 Exterior: 62 sf
 Total: 659 sf



KINGSWAY
 Levels 34-51



KINGSWAY
 Levels 52-58

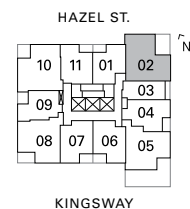


KINGSWAY
 Levels 59-65

Plan D2a

2-Bedroom + Den

Interior: 871 sf
 Exterior: 152 sf
 Total: 1,023 sf



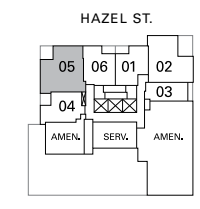
Levels 34-58

The developer reserves the right to make changes and modifications to the information contained herein. Floorplans and floorplates are subject to change without notice. Please contact a developer sales representative for details. This is not an offering for sale, as an offering can only be made after the filing of a disclosure statement, and only in jurisdictions where qualified in accordance with applicable local laws. E.&O.E.

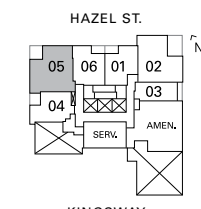
Plan E

3-Bedroom

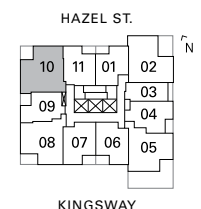
Interior: 905-910 sf
 Exterior: 86 sf
 Total: 991-996 sf



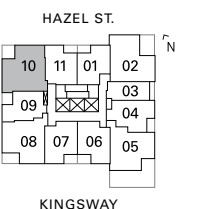
Level 32



Level 33



Levels 34-58



Levels 59-65

The Standard, Metrotown



South Yards, Brentwood



NUVO, Metrotown



Station Square, Metrotown



Anthem

Founded in 1991, Anthem is a team of 500 people driven by creativity, passion and direct communication. Anthem has invested in, developed or managed—alone or in partnership—more than 320 residential, commercial and retail projects across western North America.

Our growing residential portfolio includes 20,500 homes that are complete, in design or under construction, from masterplanned mixed-use residential and multi-family, to townhome, rental and single-family communities.

We own, co-own, manage or have previously owned over 9 million square feet of retail, industrial and office space. We have developed more than 60 communities across 8,500 acres of land in Alberta, British Columbia and California. Anthem is a real estate development, investment and management company that strives, solves and evolves to create better spaces and stronger communities.

We are Growing Places.



The developer (Anthem Metro King Developments LP) reserves the right to make changes and modifications to the information contained herein. Maps, views, photography, and renderings are representational only and are not necessarily accurate, and final design, construction, and features may differ. Floorplans, layouts, finishes, prices, and availability are subject to change without notice. Please contact a developer sales representative for details. This is not an offering for sale, as an offering can only be made after the filing of a disclosure statement, and only in jurisdictions where qualified in accordance with applicable local laws. E. & O.E.