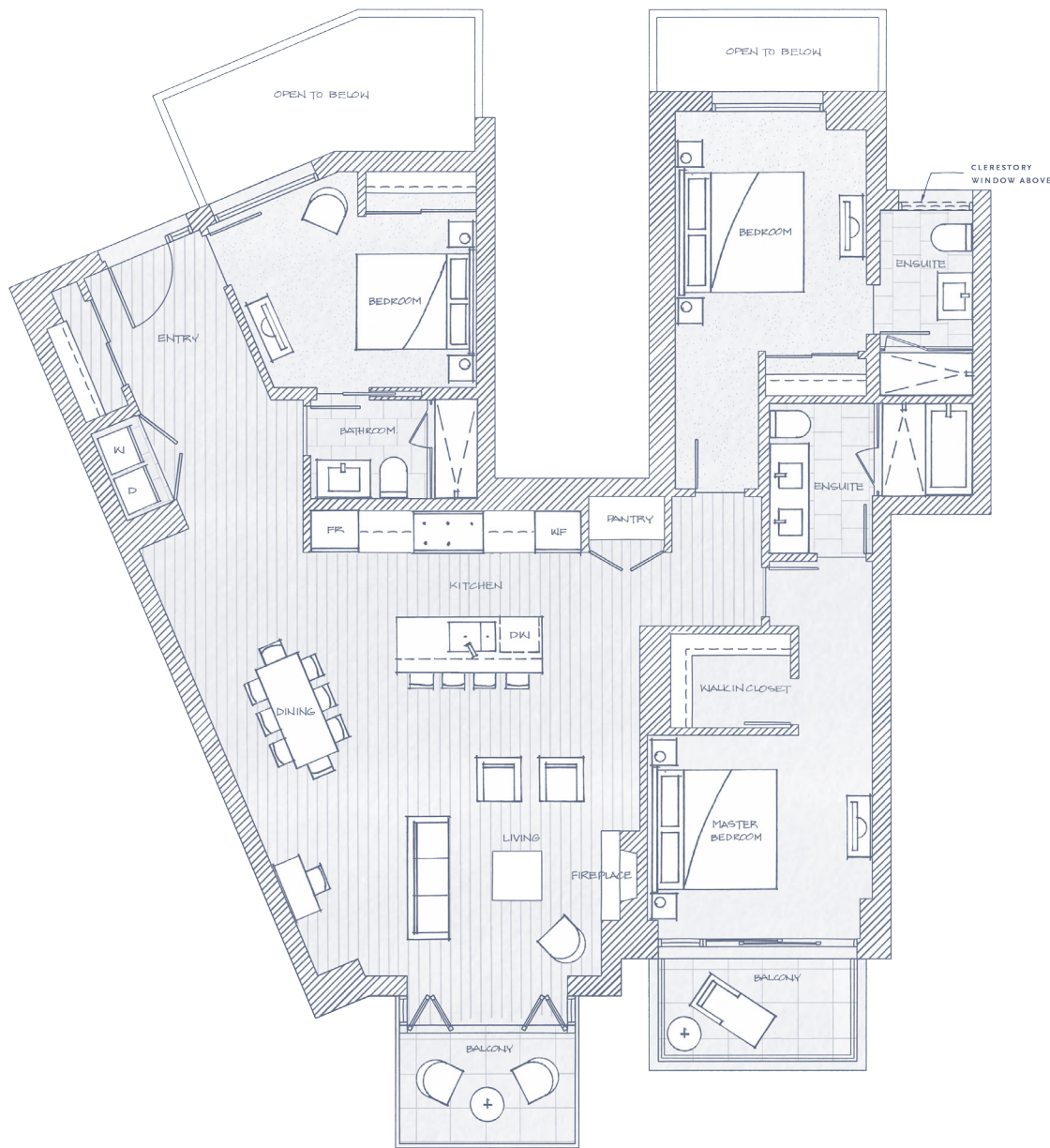


# HORSESHOE BAY

## OCEANFRONT VILLAS PLAN H

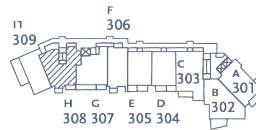
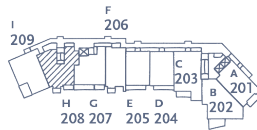
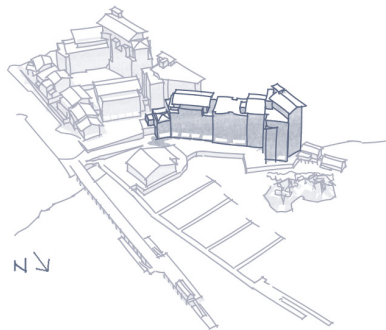
3 Bedroom / 1,861 sf Total Living  
Balcony 130 sf



OCEANFRONT VILLAS

FLOOR 2

FLOOR 3



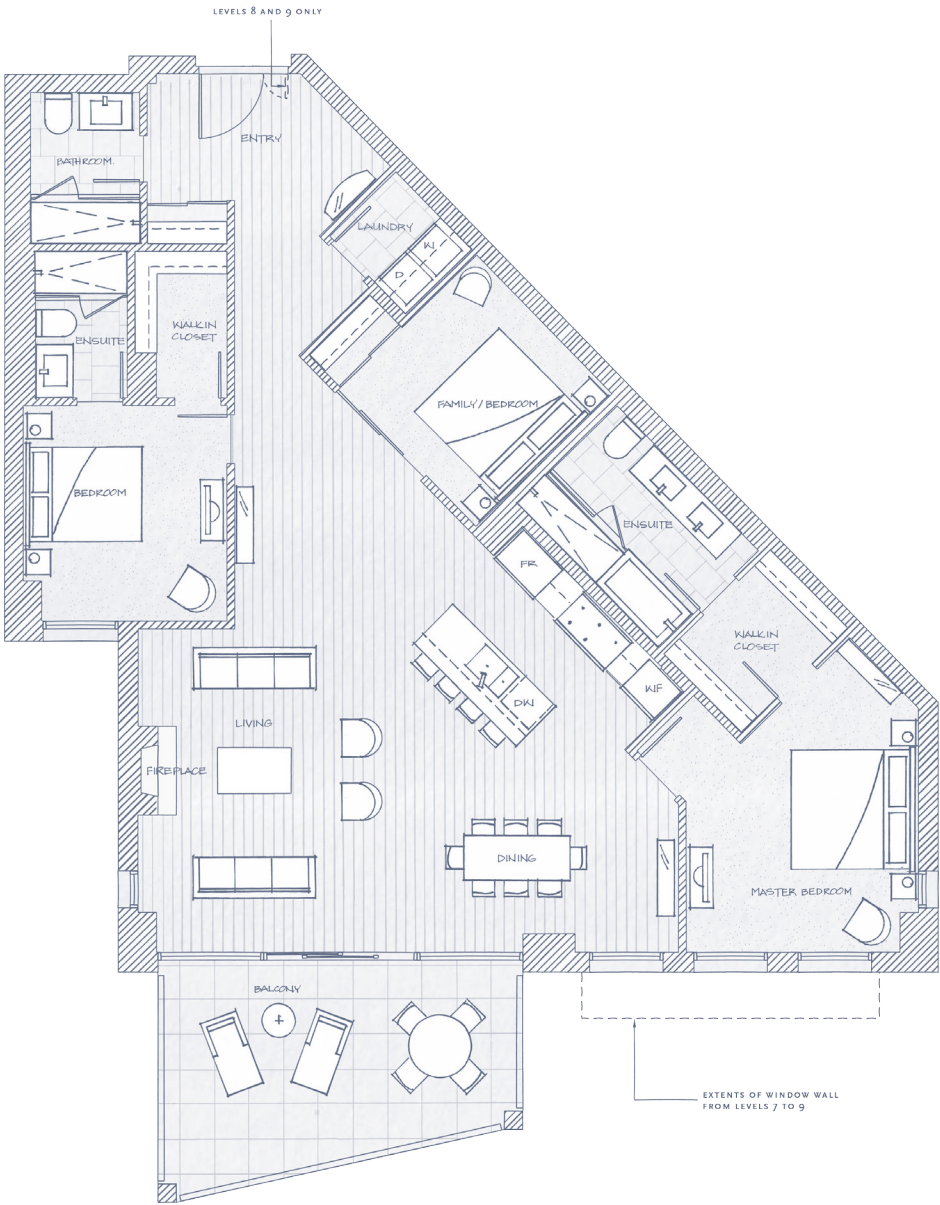
WEST  
VANCOUVER  
CANADA

Dimensions, sizes, specifications, layouts and materials are approximate only and subject to change without notice. E.&O.E.

# HORSESHOE BAY

## OCEANFRONT VILLAS PLAN B

2 Bedroom + Family / 1,998 - 2,041 sf Total Living  
Balcony 226 sf

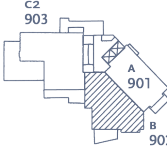
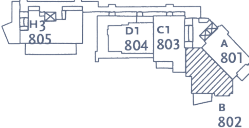
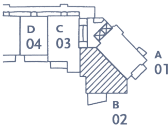
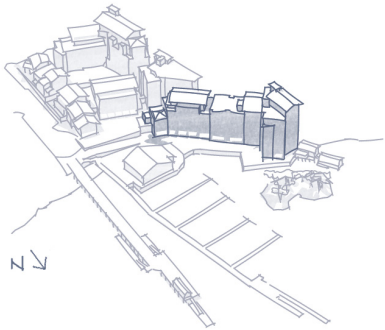


OCEANFRONT VILLAS

FLOOR 2 - 7

FLOOR 8

FLOOR 9

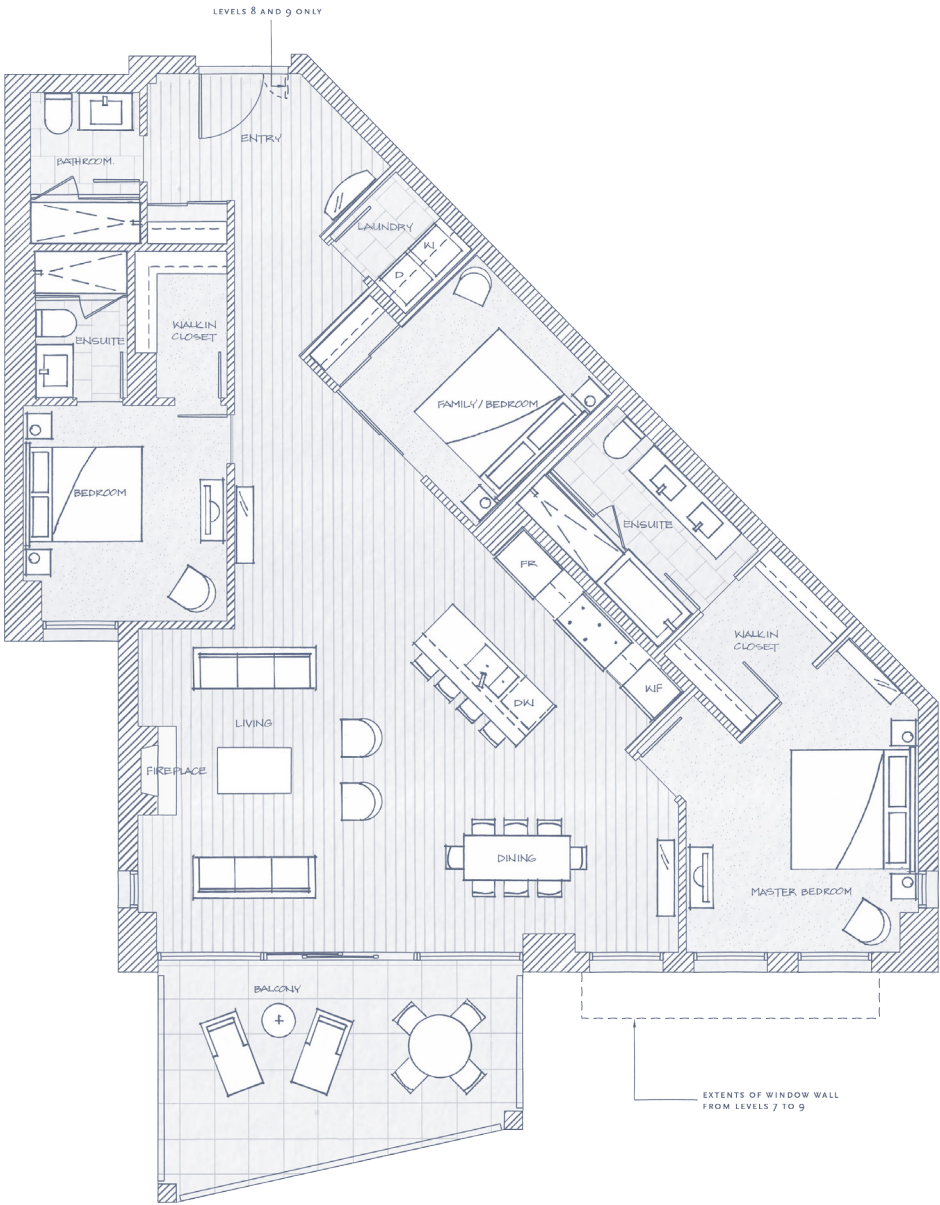


WEST  
VANCOUVER  
CANADA

# HORSESHOE BAY

## OCEANFRONT VILLAS PLAN B

2 Bedroom + Family / 1,998 - 2,041 sf Total Living  
Balcony 226 sf

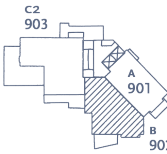
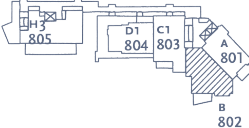
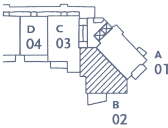
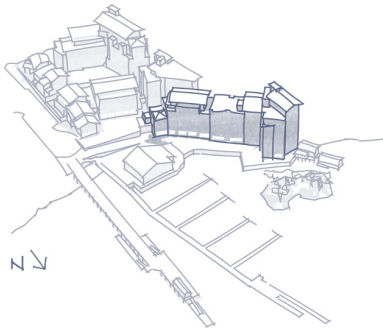


OCEANFRONT VILLAS

FLOOR 2 - 7

FLOOR 8

FLOOR 9

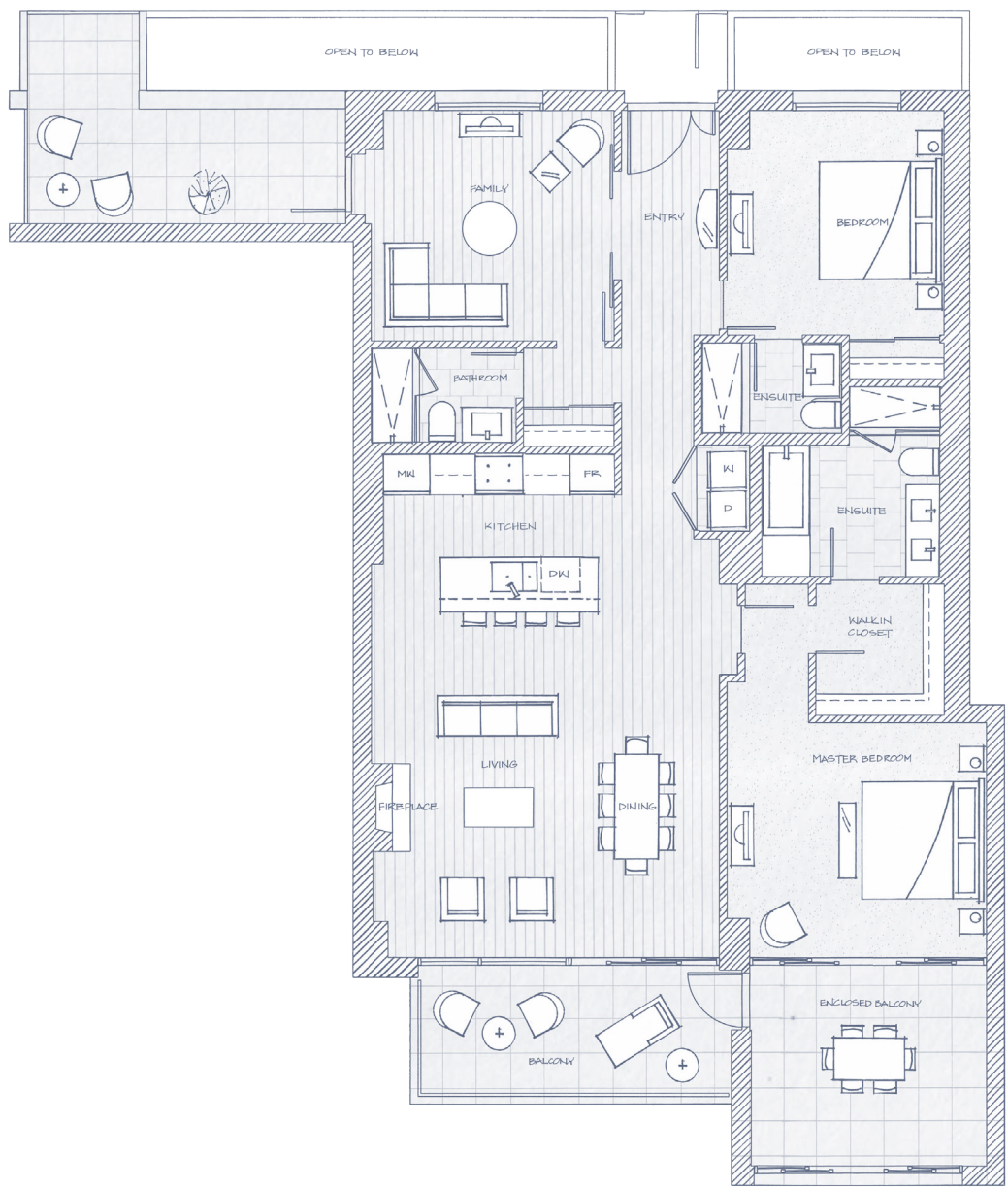


WEST  
VANCOUVER  
CANADA

# HORSESHOE BAY

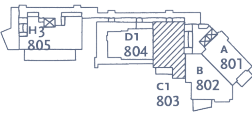
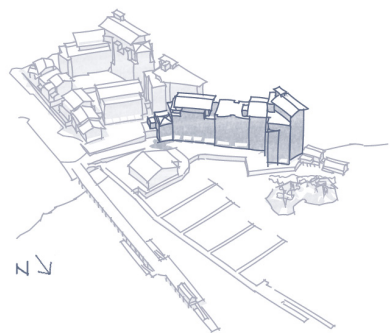
## OCEANFRONT VILLAS PLAN C1

2 Bedroom + Family / 2,119sf Total Living  
Balcony 309 sf



OCEANFRONT VILLAS

FLOOR 8



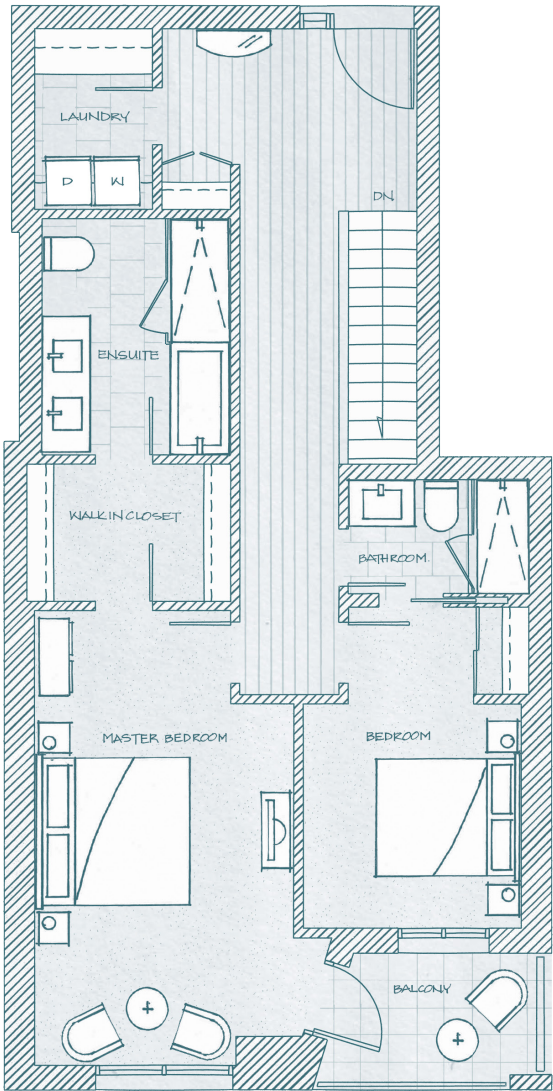
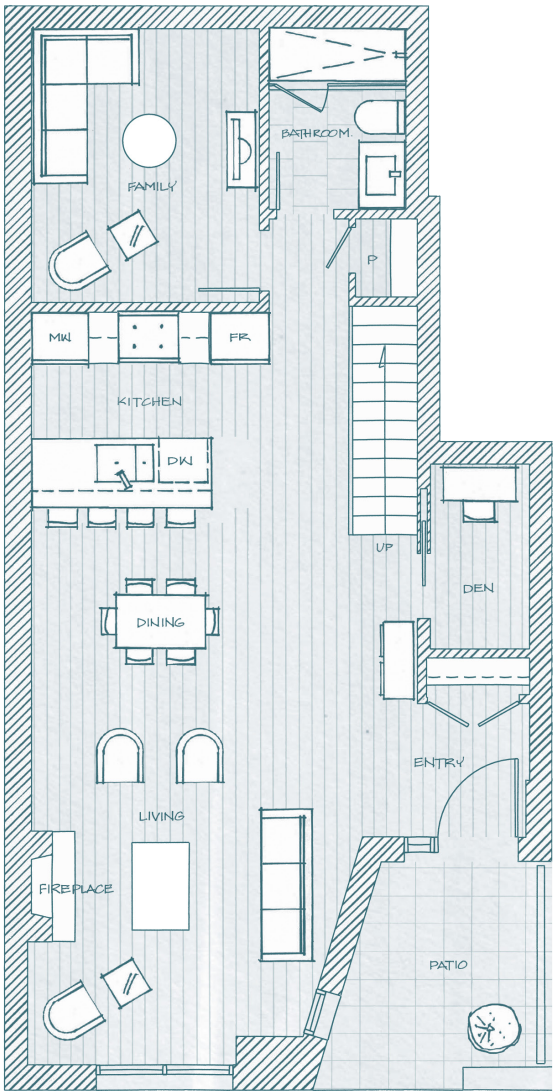
WEST  
VANCOUVER  
CANADA

Dimensions, sizes, specifications, layouts and materials are approximate only and subject to change without notice. E.&O.E.

# HORSESHOE BAY

## FOREST VILLAS PLAN C

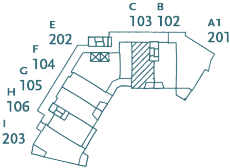
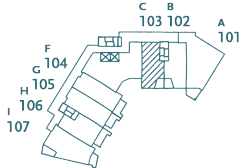
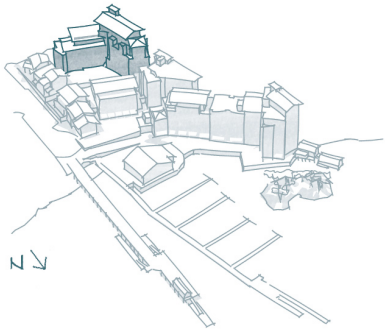
2 Bedroom + Family / 2,039 sf Total Living  
Patio + Balcony 147 sf



### FOREST VILLAS

### FLOOR 1

### FLOOR 2



WEST  
VANCOUVER  
CANADA