

CURV



Contents —

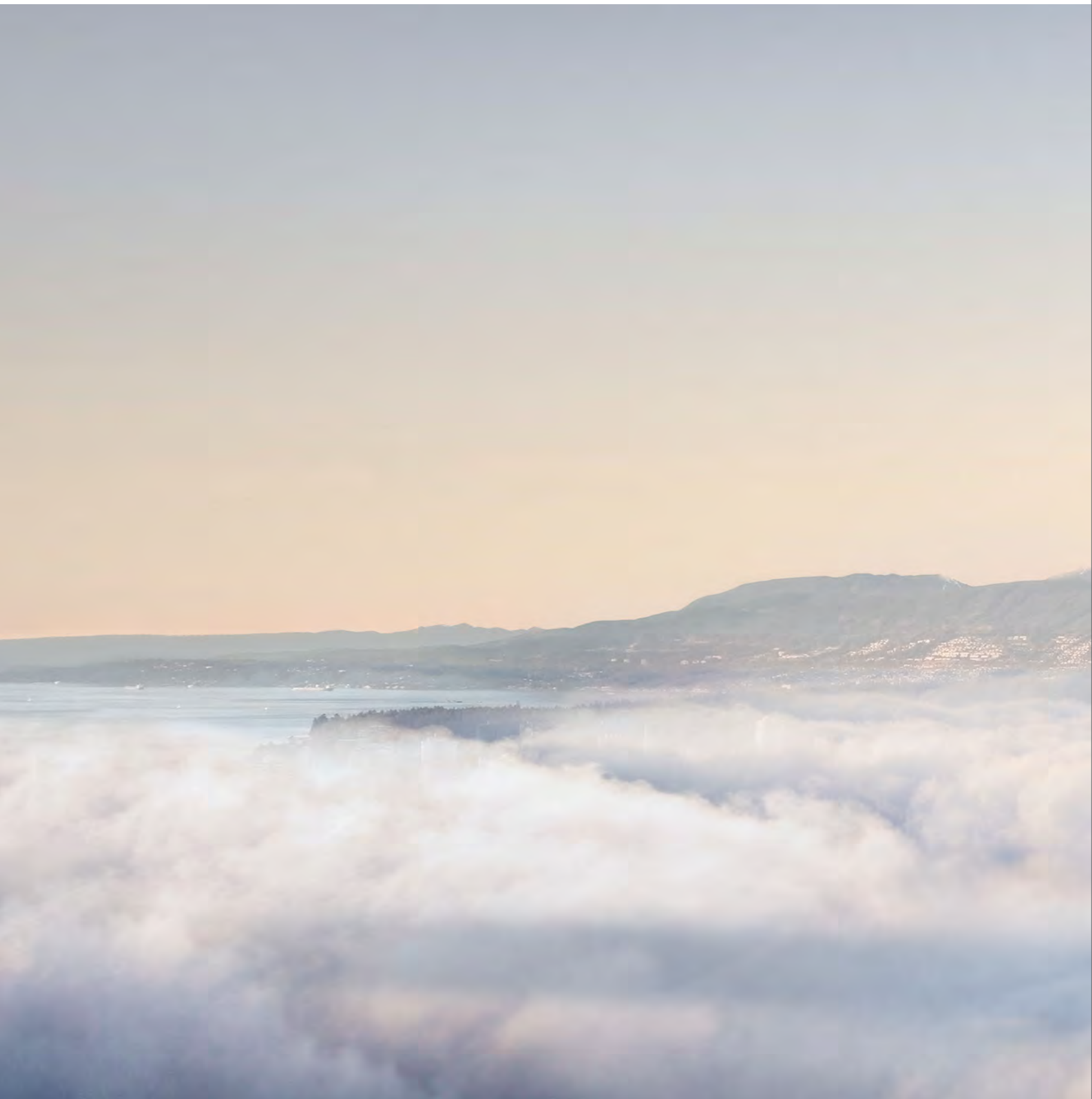
1	Purposeful — Vision
13	Iconic — Architecture
21	Ethereal — Interiors
43	Pinnacle — Location
49	Generational — Passive House
53	Transformative — Partners

Purposeful

— Vision



The inlay of this brochure is printed on Astrolite PC 100— a 100 percent post-consumer waste recycled fiber printing paper. The cover is printed on Mohawk Superfine. This brochure is printed in a carbon neutral facility using UV technology that creates no greenhouse gases.



An international collaboration between architect Tom Wright, architectural interior designer Andres Escobar, and Brivia Group founder Kheng Ly, CURV is luxury with purpose. As the tallest Passive House in the world, it raises the standard for residents today and generations tomorrow.



Ahead of the Curve—

Vancouver is known for its beauty, its livability, and its campaign to be the greenest city in the world. It is also admired globally for the quality of its urban planning and, increasingly, for its architectural ambition. All this makes Vancouver the perfect canvas for a visionary project: a 60-storey, luxury Passive House tower that stands as a tribute to the city, and a new benchmark for design excellence and environmental achievement worldwide.



—Kheng Ly
Founder, President and CEO
Brivia Group



CURV is a visionary idea expressed in a luxury home: everything you would expect of an exclusive, international residential property, and something more—an exacting and, at this scale, unprecedented Passive House standard that achieves new heights for both personal and planetary wellbeing. Like Tesla in its innovative breakout phase, CURV leverages world-leading technological performance to deliver the highest-quality personal experience. With iconic architecture, ethereal interiors, elevated amenities and services, panoramic views, and game-changing environmental achievement—CURV is luxury with purpose.

Luxury with Purpose

On the rooftop: an elegant, open-air lounge and fireplace, all glass-enclosed to protect against the wind while optimizing the views





Health + Wellbeing —

A home should guard against the challenges of modern life—from microbes and allergens; from pollution, noise or otherwise; and from an increasingly erratic climate of raging storms and temperature spikes. Passive House is the logical extreme in that ambition—with everything from an impenetrable building envelope to a purifying air exchange system—designed and built to assure not only luxurious comfort but the optimal conditions to thrive. CURV's design and construction standard means residents can pass on the gift of health and wellbeing to the next generation, and the Passive House standard ensures this legacy with energy use so efficient it has lower operating costs and strata fees—freeing up resources and future-proofing its value. This is a maximally sustainable home that will take care of residents, their families—and the environment—for years to come.

The Future of Living

CURV's Passive House design is evident in its high performance, energy efficient building envelope—ensuring the health and wellbeing of residents and their families



Iconic

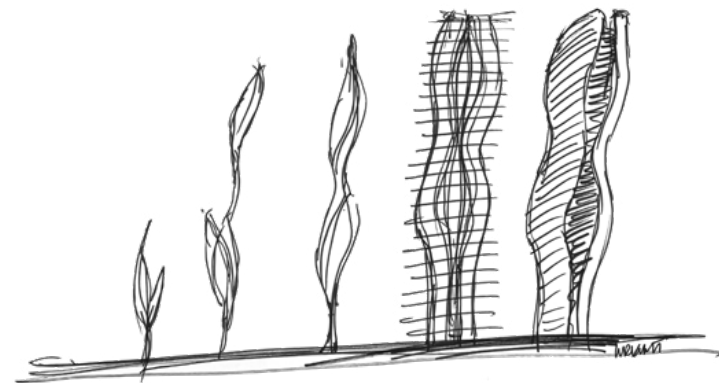
— Architecture

When CURV architect Tom Wright sat down to design his first North American project, he chose a form that would be elegant, organic—iconic—and a function that would be unprecedented for its environmental ambition. The flowing, feminine form Wright likens to a fresh green shoot breaking through fertile earth, minimizing its physical footprint while maximizing space and potential in the residences above. The function is the Passive House design-and-construction standard—so energy efficient that it assures the height of livability with the lightest environmental footprint. “In nature, there are no straight lines” says Wright, quoting 19th century Spanish architect Antoni Gaudi, “the straight line belongs to men, and the curved one to God.”

Since breaking onto the international scene with his Burj Al Arab in the 1990s, Wright says no project triggered the excitement he felt when working on CURV. And now, he says, “When I look back on everything I’ve done, the Burj will always be there; it was a breakthrough. But I think it will be CURV that I want to talk about.”

The Shape of a New Era

- 1 Tom Wright’s inspiration was a fresh green shoot, reaching skyward
- 2 CURV’s flowing form breaks out of the architectural box





1

Tom Wright —

While still in his 30s, WKK Architects Principal Tom Wright was invited to submit designs for a prestigious hotel in Dubai—the Burj Al Arab. In just two weeks, he sketched 11 options and the client—Sheikh Mohammed bin Rashid Al Maktoum, Vice President and Prime Minister of the United Arab Emirates (UAE), and the ruler of Dubai—took one look at Wright’s favourite, a soaring form in the shape of a sail, and said, “We shall build it.”

The success of the Burj Al Arab spawned a global career, during which Wright designed marquee projects across Europe, the Middle East and Asia, such as The Gallery, Ad Astra, and Trilogy. In 2013, Wright and two senior colleagues broke away from the global architectural and engineering giant Atkins to set up WKK Architects, a multi-award-winning architectural practice dedicated to the pursuit of excellence in design, from sketch to reality. Wright, now liberated from running what had become one of the biggest architectural practices in Europe, says he is now free to get back to the drawing table to fulfill what he regards as the key responsibility of an architect—creating designs that uplift the spirit and save the planet. In which light, he says, CURV will be the culmination.

A Creator of Icons

- 1 Burj Al Arab, Dubai’s leader in Arabian luxury (described as the world’s only 7 star hotel) designed by CURV architect Tom Wright
- 2 Architecture by Tom Wright, Principal of WKK Architects

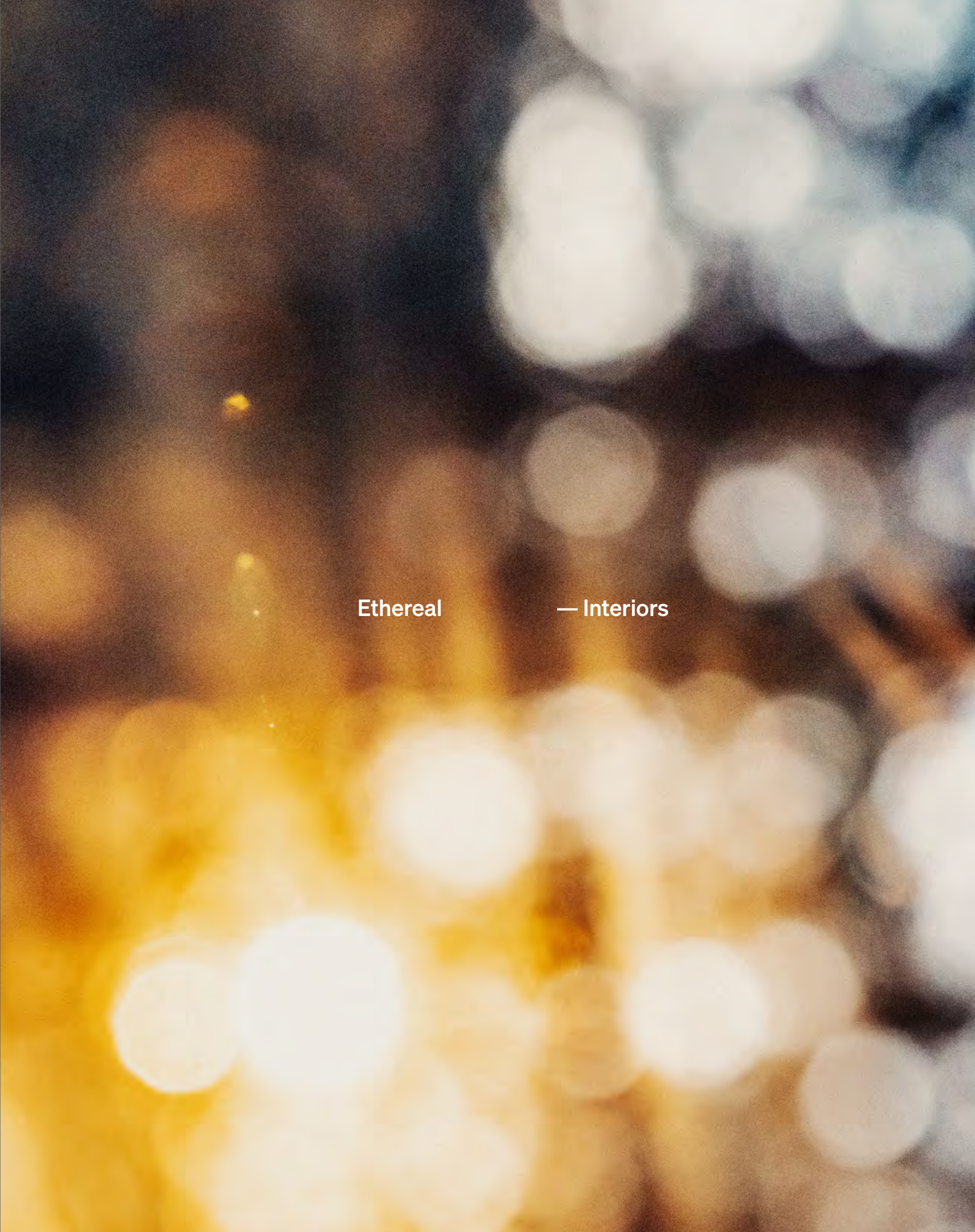
2



17



The elegant brushed-steel-and-glass residential entry on Nelson Street, with visitor amenities and custom public art



Ethereal

— Interiors

In a global market where discerning buyers have their choice of impeccably appointed homes, the highest standard of design excellence is a minimum expectation. Building on the foundation of a Passive House tower of this scale, CURV designer Andres Escobar has chosen elements and materials that will not just add, but accumulate value, with interior design that is both elegant and enduring.

Beginning with the lobby—a sanctuary within the city—Escobar's renowned aesthetic and attention to detail is evident from the elevator cabs to the tower's furthest corners, reaching full expression in 358 serene, beautiful residences from the 21st floor upward.

Elegant and Enduring

Residential lobby with fluted-stone and fluted-glass walls, a white stone concierge desk, all over silver-light porcelain tile flooring





1

Andres Escobar —

Andres Escobar is renowned today for upscale New York properties such as One Times Square and the Summit apartments. But Escobar was once a Montrealer, and was excited to collaborate with that city's top developer—Brivia Group's Kheng Ly.

Escobar says he is energized by the opportunity to bring his skills to Vancouver—to understand 'what belongs' in this Pacific capital and in a building that will be celebrated for its sustainability leadership. In collaboration with the interior design team at Lemay_id, he selected designs that would create "an oasis, a place of tranquility in this busy city—a sense of understated sophistication." Escobar says, "I don't want to use the term 'Zen' loosely, but we understand that the Orient has a similar aesthetic as Scandinavia—a linearity that is minimalist and elegant. Serene."

In that tradition, from the finely appointed homes to the wide-ranging amenities, Escobar says that CURV, contemporary but timeless, "will be so beautiful as to make you dream."

Understated Sophistication

- 1 Carefully curated materials will add elegance and sophistication
- 2 Architectural interiors by Andres Escobar, in collaboration with Lemay_id

2





CURV's elegant and highly functional suite designs maximize luxury and optimize the views



Finely crafted European kitchens will include stylish hardwood floors and best-in-class appliances



Exquisite porcelain tiles and quartz counters, crystal clear mirror and cabinet, and high quality fixtures make for immaculate bathrooms



Ultra-filtered, temperature-controlled air
in a peaceful sound-insulated environment
makes for well-rested mornings

Vancouver's Tallest Residential Tower

Views —

Befitting of Vancouver's tallest residential tower on the downtown peninsula's highest point—CURV sees the city as never before, with soul-stirring views; offering residents the best vantage point in one of the most beautiful places on earth.





Amenities & Services —

CURV will rise above—one of the few edifices of this caliber to offer residents the use of prime, top-floor facilities—overlooking the whole city and beyond to the North Shore Mountains, the Salish Sea, the Olympic Peninsula, and the distant valleys and peaks to the east. From the 24-hour concierge on the ground level to top-floor access—via speedy, destination elevators—residents can rely on CURV, every day, for top-tier amenities and services.

The Height of Luxury

Rooftop terrace with open-air entertainment

CURV's top two floors are a gift to residents—an opportunity to be restored and refreshed overlooking heavenly views; a conduit for beauty and wonder in daily life. On the 60th floor, residents will find an expansive lounge and an elegant and richly-appointed private dining room. The gym, with professional-quality equipment, makes best use of the views, alongside a game lounge and a yoga room powered by Lululemon Studio. One floor up on the rooftop is a professional chef's kitchen—for private use or for catering—and the open-air SkySpa and SkyBar, sheltered by a wall of windows that block the wind, but not the wonder.

Beauty and Wonder



1

2



3

- 1 60th floor Yoga Room, powered by Lululemon Studio
- 2 Gym with oil-oak Eco-surface planking
- 3 60th floor private lounge with bar, entertainment centre, wool-and-silk inset carpeting
- 4 Built-in, temperature controlled wine rack

4





Rooftop terrace with Social Garden and Spa





Pinnacle

— Location

Vancouver is one of the world's great cities—renowned for its natural beauty, it ranks consistently among the top 10 most-livable in the world. With a global reputation for excellence in urban planning—'Vancouverism' is now an internationally emulated planning paradigm—Vancouver has earned praise for its architecture and global environmental leadership. Location, quality, sustainability: these are the components of accumulating value.

Beautiful, Livable, Sustainable

- 1 CURV's central location, located at the apex of Downtown Vancouver on Nelson at Thurlow—easily accessible by car, transit, bike and foot
- 2 CURV, across from Nelson Park with unencumbered views overlooking English Bay and Stanley Park



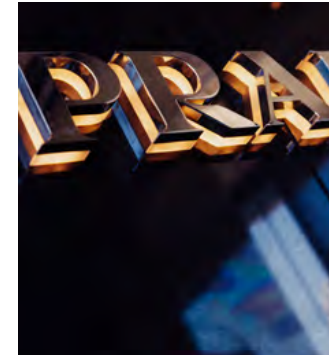
Nelson Heights is fast becoming downtown Vancouver's most sought-after address. Overlooking historic mansions in Vancouver's West End and kitty corner from Nelson Park, CURV is flanked by the high-fashion and luxury retail Robson and Alberni streets in one direction, and the character and restaurant offerings of Davie Village in the other—all adjacent to the city's premier business district.

The Luxury of Livability

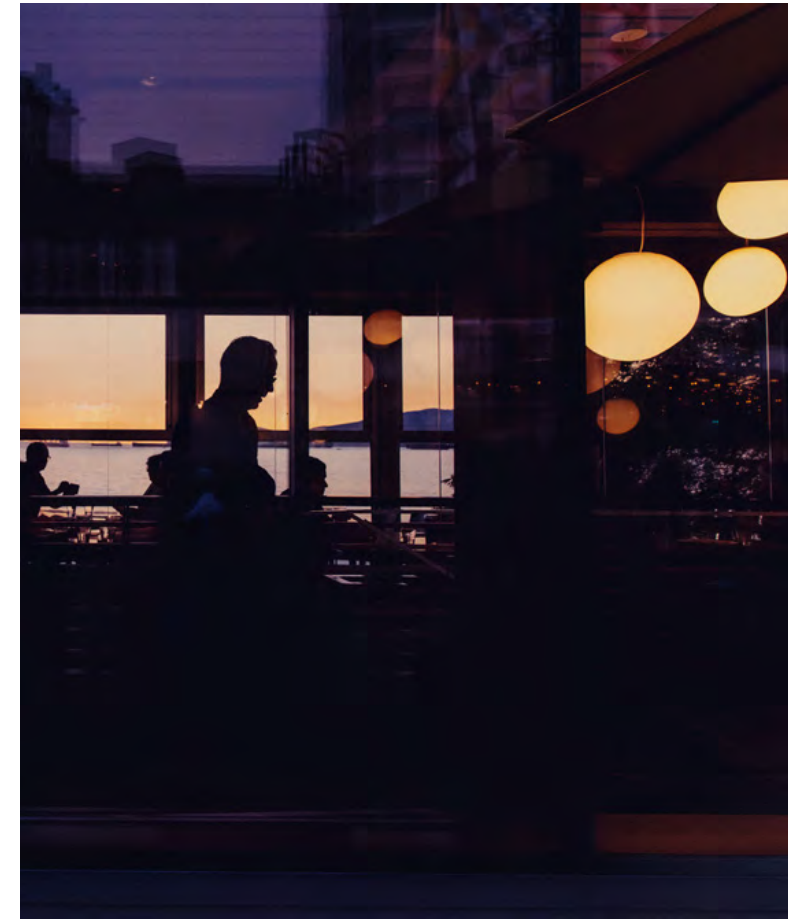


1

- 1 The West End boasts a warm microclimate, with palm trees flourishing all year round
- 2 High fashion and luxury branding on Robson and Alberni streets to the north
- 3 Beachside restaurant with view of English Bay sunset
- 4 Ocean breezes and fading evening light at First Beach, just blocks away



2



3



4



Generational

— Passive House

The environmental crisis is a threat to the livability of our planet, but we chose to see it as a design challenge. Building and construction account for nearly 40% of energy-related greenhouse gases in cities, and this means architects, designers, developers, and residents can meaningfully contribute. As the tallest Passive House in the world, CURV will mark a new era of design and engineering in line with nature—setting the standard by which all future highrise residences can be judged.

— Super Insulation



Exceptional insulation guarantees optimal indoor temperatures. The high-quality, carefully engineered Passive House building envelope enhances comfort and ensures longevity.

— Airtight, Insulated Windows



Triple-glazed, draft-free windows protect against the elements: cold, heat, and searing sunlight.

— Incorporation of Thermal Breaks



Great attention is taken into detailing all aspects of the building envelope—from thermally isolating balcony slabs to incorporating thermal breaks in window framing elements—to minimize thermal bridging.

— Airtight Building Envelope



The structure's airtight building envelope prevents unwanted drafts and ensures that the interiors are not only comfortable and energy efficient but the quietest available anywhere.

— Excellent Ventilation, Efficient Energy Recovery



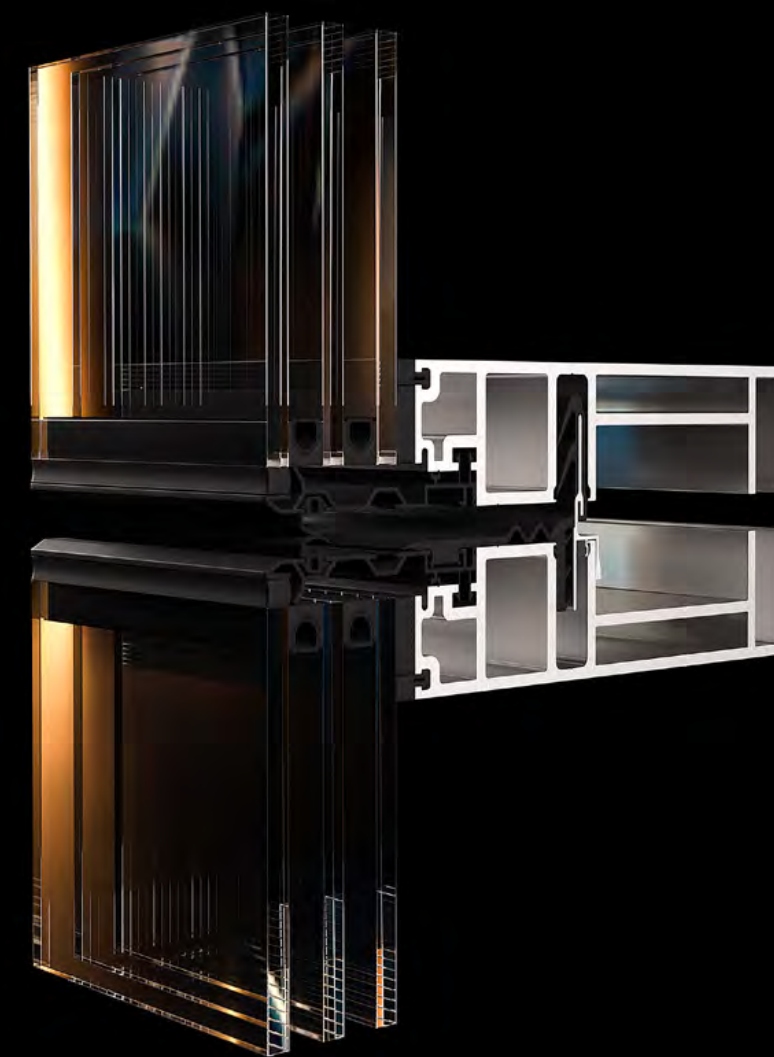
CURV's state of the art ventilation system ensures the quiet circulation of clean, filtered, temperature-adjusted air. In the winter the heat recovery units—which act like the lungs of the system—capture the heat energy from the outgoing warmer air and transfer it to the incoming cold fresh air, and vice versa in the summer.

Designed in Canada and developed in Germany, Passive House is internationally recognized as the leading science-based standard for low carbon, energy-efficient homes. Its exacting specifications create the optimal conditions to thrive—including fresh, filtered air in a quiet, tightly insulated, temperature-optimized environment—at lower ongoing costs. Far exceeding the City of Vancouver's 2030 target for net zero emissions, CURV will use as little as 10 percent of the heating and cooling energy of similar conventional buildings. Proving the Passive House form at this scale, CURV will be a tipping point in highrise residential construction—the most energy efficient structure of its kind in the world and a new standard for the future of living.

Heating/Cooling Energy —

Passive House buildings save up to

90%



Triple-glazed windows fit precisely in self-insulating frames to prevent drafts and defeat thermal bridging

Technological Excellence



Transformative

— Partners



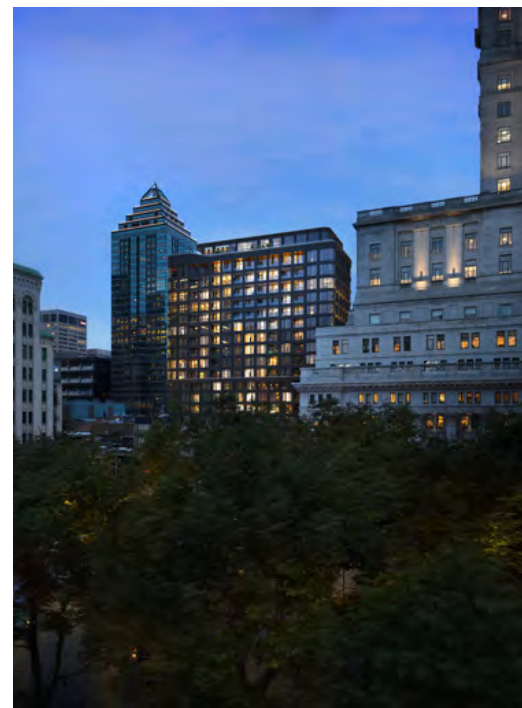
1



2



3



4

Brivia Group +
Henson Group —

Founded in Montreal in 2000, Brivia Group is a real estate investment and development company with an award-winning record, ranging from luxury condominiums and rental projects to commercial buildings and resorts. Under the guidance of Founder, President, and CEO Kheng Ly, Brivia Group has delivered more than 10 million square feet of gross buildable area, including city-shaping Montreal projects such as the YUL Condominiums, QuinzeCent, 1 Square Phillips and Mansfield. Together with partner Henson Group, Ly's team is eager, with their first Vancouver project, to raise the standard for architectural quality and environmental sustainability with CURV.

A City-Shaping Partnership

- 1 1 Square Phillips
Montreal, Quebec
- 2 L'Hymne des Trembles
Mont-Tremblant, Quebec
- 3 YUL
Montreal, Quebec
- 4 Mansfield
Montreal, Quebec
- 5 Kheng Ly
Founder, President and CEO
Brivia Group

5



Melody of the Heavens —

Vancouver is Canada's westernmost capital and the Pacific Gateway to the east; and so CURV—the new high point in this cosmopolitan city—has a special identity: 天韻 (*Tin Wan/ Tīān Yùn*). Translated from Chinese, the two words mean 'sky' and 'sweet melody'. Together, they give rise to a 'Melody of the Heavens'—the beautiful sound of good news from above. CURV is the result of decades of design and development, culminating in the highest standards for quality, health and wellbeing, and the most advanced technology for engineering and construction. This is a celestial serenade for a sustainable community on a changing planet—much needed good news. In any language, CURV—天韻—aspires to transcend, delivering some of the most beautiful, sought after homes in Vancouver—marking a significant moment in global real estate development, for the benefit of all.

天韻



CURV Presentation Gallery —

Suite 105 – 510 Burrard Street
Vancouver, BC V6C 3A8

604 960 2878

info@thecurv.ca

thecurv.ca

BW Sales by BakerWest
BAKERWEST Real Estate Inc.

