



SIMPLICITY IS THE ULTIMATE

FORM OF

SOPHISTICATED

COMPLEXITY

IS THE ULTIMATE



INFORMED LIVING

Rising eleven storeys on a charming South Granville street, FORM by Anthem is inspired by its surroundings. Rich in design, culture and community.

This elegant collection of one, two and three bedroom homes is built with intention to quietly express living in the here and now. To be in this neighbourhood, in this time. A living experience that is designed to be inherently timeless.





THE NEARBY WATERFRONT
IS ALIVE WITH ACTIVITY
AND CULTURE



THE IMPORTANCE OF PLACE



1. OYAMA SAUSAGE CO.



2. GRANVILLE ISLAND FLORIST



3. LIVINGSPACE INTERIORS



4. PROVIDE HOME



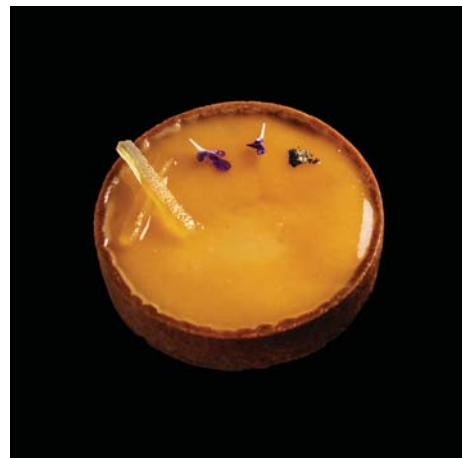
5. BENTON BROTHERS FINE CHEESE



6. MIRAJ HAMMAM SPA



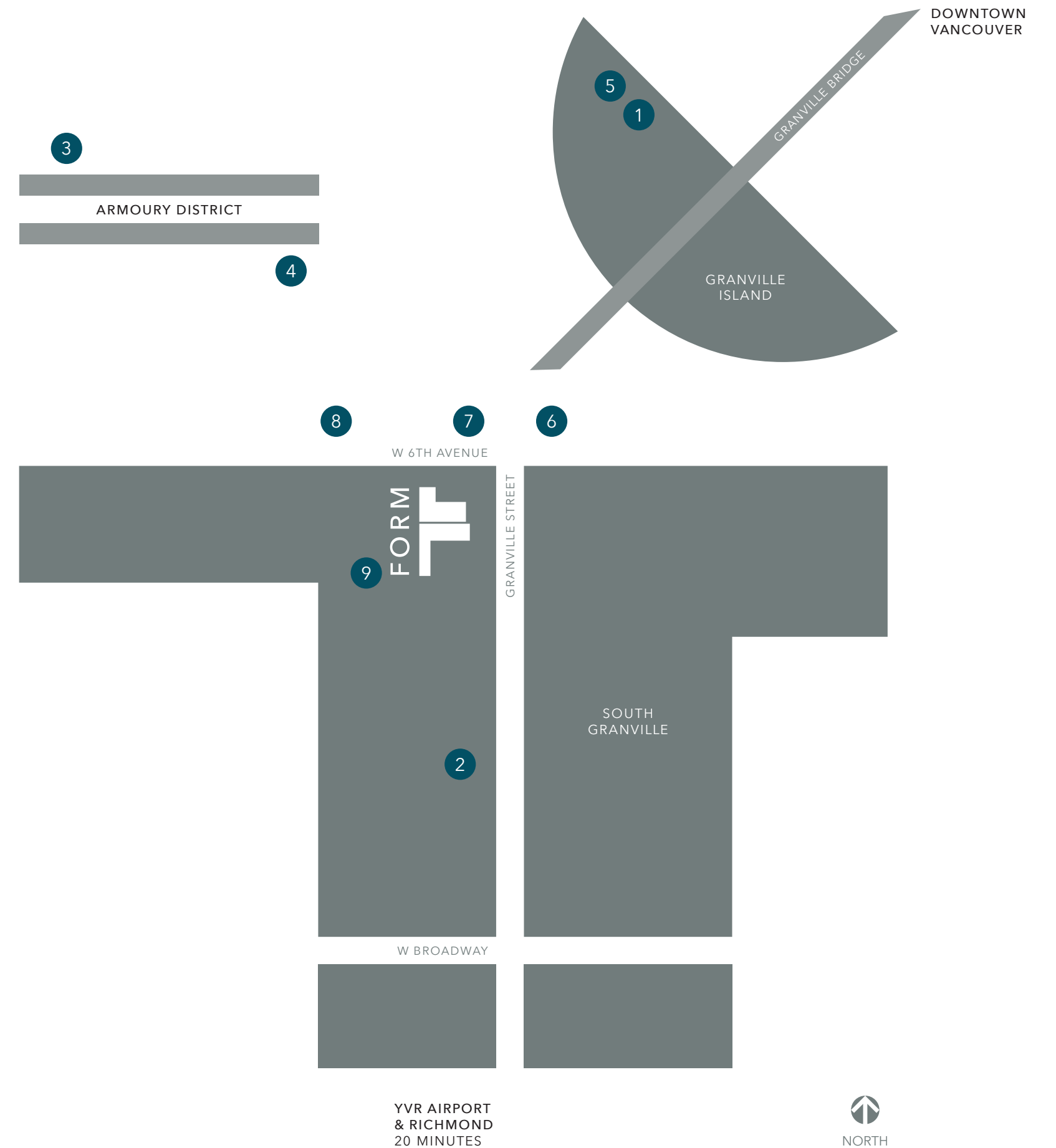
7. ATKINSON'S



8. BEUCOUP BAKERY



9. CAFÉ SALADE DE FRUITS





"THE LUXURY OF TOMORROW
ISN'T MONEY OR RECOGNITION -
IT'S MEANING AND PURPOSE.
IT'S TIED TO CONSERVING LOCAL
HERITAGE, AGRICULTURE AND
PERMACULTURE.
IT'S PUTTING LOCAL FIRST."

- FRÉDÉRIC BIOUSSE
Hotelier



"DESIGN FOR ME, MUCH LIKE FASHION, IS A FORM OF PURE SELF-EXPRESSION WHEN DONE CORRECTLY, AND HAS A WAY OF TRANSFORMING ENVIRONMENTS THAT MIGHT OTHERWISE BE CONSIDERED UNREMARKABLE INTO SOMETHING BREATHTAKING."

- ROSS BONETTI
Livingspace Interiors





"MY ORIGINAL VISION FOR MIRAJ HAMMAM SPA WAS TO CREATE A CULTURAL EXPERIENCE IN A SPA ENVIRONMENT. WE ARE THANKFUL TO BE SURROUNDED BY ALL OF THE CHERISHED QUALITIES OF SOUTH GRANVILLE AND GRATEFUL TO STILL BE A PART OF ITS CULTURE AFTER 21 YEARS."

- SURINDER BAINS
Miraj Hammam Spa



CULTURE





A NEIGHBOURHOOD THAT
FLOWS WITH AUTHENTICITY
AND CHARISMA



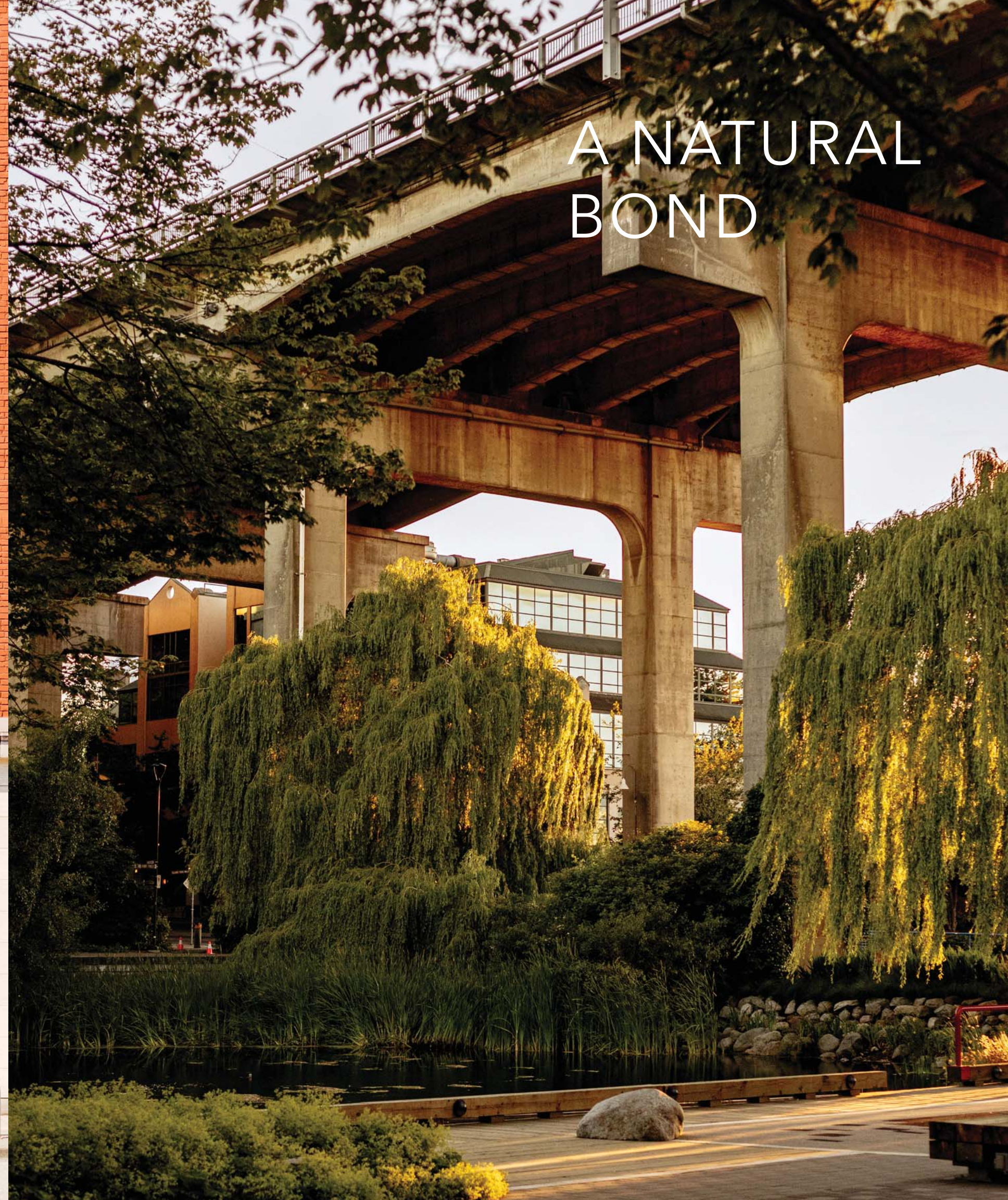


“WHAT I APPRECIATE MOST ABOUT SOUTH GRANVILLE IS THAT IT IS, FIRST AND FOREMOST, A NEIGHBOURHOOD. THIS ‘VILLAGE’ HAS GROWN INTO A MOSAIC OF THE BEST IN ART GALLERIES, HOME FURNISHING STORES, CLOTHING STORES, CAFÉS, RESTAURANTS, SPAS, GYMS AND SERVICES. I’M REALLY LOOKING FORWARD TO WHAT THE FUTURE WILL BRING. IT JUST KEEPS GETTING BETTER.”

– MARGARET MURPHY
Boboli



COMMUNITY



A NATURAL BOND

“SOUTH GRANVILLE’S CULTURE LIES IN THE MIXTURE OF A LONG HISTORY OF THE CREATIVE ARTISTS IN GALLERIES AND THE OUTFLOW OF DESIGNERS EMBRACING INNOVATIVE DESIGN, WHETHER THAT IS FLOWERS, CLOTHING, FOOD OR BEAUTY. THIS FORGING OF THE ARTS AND BEAUTIFUL DESIGN PRODUCE A SPECIAL NEIGHBOURHOOD UNLIKE ANY OTHER.”

- SUZANE LEE
Granville Island Florist

“DESIGN SHOULD STAND
OUT NOT BECAUSE IT’S
LOUD, BUT BECAUSE
IT’S QUIET.”



- MICHELLE BIGGAR
omb



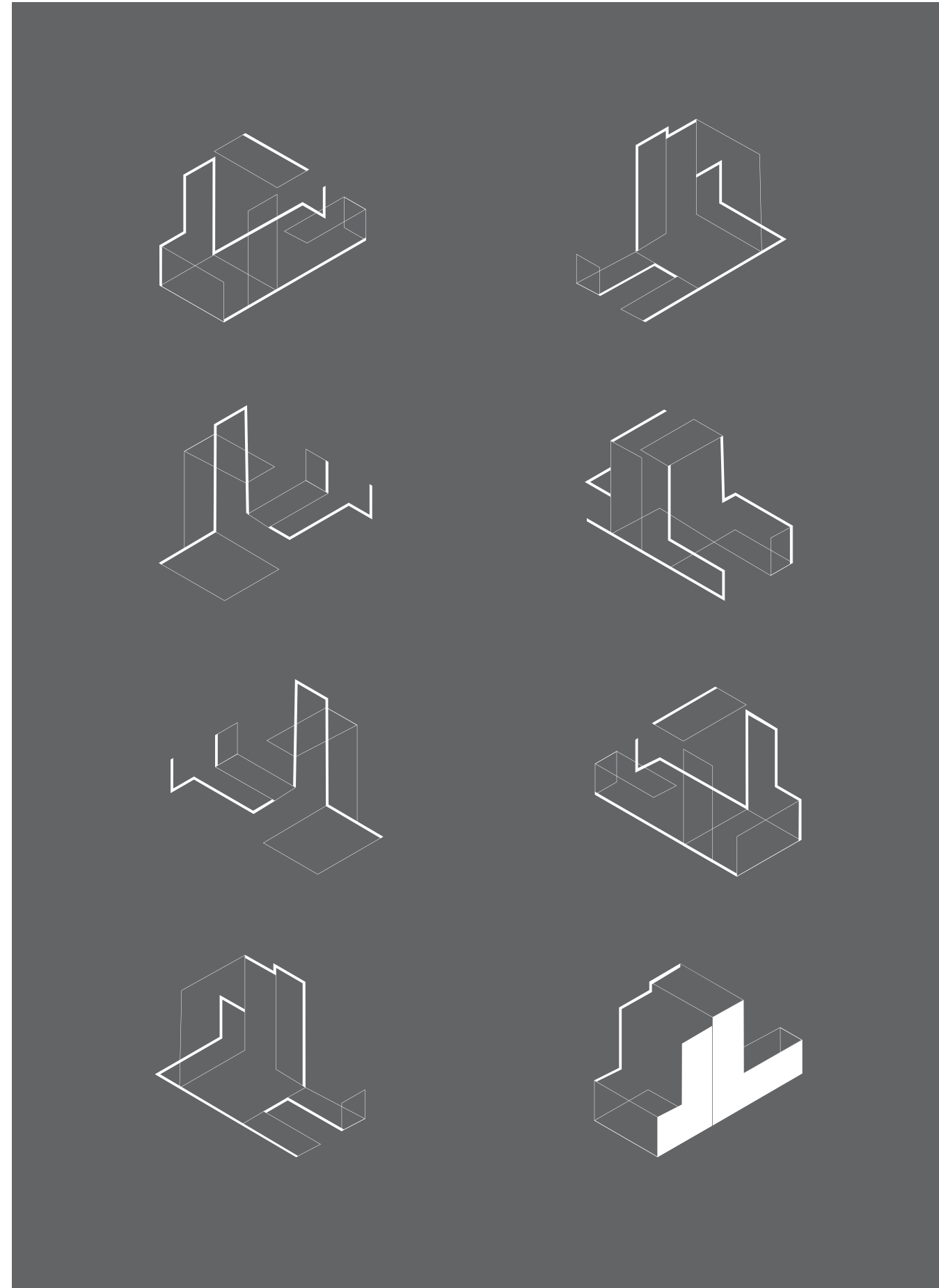


A PURPOSEFUL DESIGN PHILOSOPHY

“WHEN WE APPROACH A PROJECT, WE
ARE SIMULTANEOUSLY DESIGNING FROM
THE INSIDE OUT AND THE OUTSIDE IN.
WE BELIEVE THAT ARCHITECTURE AND
INTERIORS DRIVE ONE ANOTHER.”



- STEVE MCFARLANE
omb



THE BEAUTY
OF SIMPLICITY



Dark colour scheme with contrast kitchen island



Understated Refinement

Wide-plank hardwood flooring flows beautifully throughout for a durable and timeless backdrop.

DESIGNING ELEGANCE

The essence of design is exposed when details are pared back – that's where true sophistication exists. Form and materiality quietly combine in modern kitchens and bathrooms, creating spaces that feel light, functional and timeless. Behind the simplicity is a dedication to craftsmanship and quality.



DETAILS OF HOME

A Statement Entrance

Entry doors are oversized to create an elevated sense of arrival. At 1.5 times larger than the average door, there's an ease associated with coming home – no matter how many local shopping bags you have in your hands. A sophisticated stone threshold accompanies the experience.

Bertazzoni Appliances

Designed by an Italian family with an instinct for innovation, Bertazzoni appliances merge form with function. Precision engineering and technology lead to versatility and high performance in refrigerators, ceramic induction cooktops, wall ovens and speed ovens.

Elegant and Functional Closets

Closets in primary bedrooms are fashioned with custom wood-veneer millwork, with integrated lighting, from Italy, optimizing space and keeping your clothing and accessories in order.



Impeccable Finishes

From kitchens to bathrooms, polished chrome faucets by Baril reflect a 35-year legacy of producing exceptional designs and superior functionality.

Tailored Vanities

Thoughtful craftsmanship is behind the design of vanities by Laufen Bespoke. These unique bathroom pieces are of the highest quality and are specifically created for FORM's design aesthetic.

Classic Stone Inspiration

Dramatic terrazzo-inspired porcelain tiles from Italy climb the walls in bathrooms, with complementing stone-like tiles stretching across floors, resulting in a clean and graceful landscape.



AMENITIES
WITH A
PURPOSE



Friends and neighbours converge from the abundance of outdoor community amenities to a beautiful breezeway that connects you to a landscaped inner courtyard and outdoor lounge.



Townhomes featuring interior courtyard

ANTHEM IN VANCOUVER

Esteemed as one of the world's top-tier, most livable cities, Vancouver offers an unparalleled destination to live, work, study, play and invest. A global gateway with deep and diverse roots, Vancouver is a young city with a profound respect for culture, nature, history and community. Inspired by the striking backdrop of the North Shore mountains, with a picturesque location on the Burrard Peninsula between the Burrard Inlet, Fraser River and Strait of Georgia, and home to Stanley Park, one of the largest urban parks in North America, Vancouver is a "Top 10 City", globally recognized as the Lower Mainland's cultural epicentre. With creative energy and enthusiasm for an enriched lifestyle, Vancouver interconnects active, engaging streets to a dynamic, urban lifestyle that encourages intentionality.

Anthem's plan for the city is rooted in the pursuit of placemaking, with each Anthem development an opportunity to complement the city's growing skyline and foster meaningful experiences for its users. We deliberately focus on developing communities with strong, authentic narratives - natural elements, respectful architecture, principled design, quality construction, and engaging streetscapes that culminate in a welcomed sense of place - so people can feel their best at home.



Park | Vancouver



With over 30 years of real estate development experience, every Anthem community is an evolution of the last, anchored by a steadfast vision to create great space and vibrant, synergistic spaces for all its intended users: homeowners, tenants, retailers, pedestrians, and the broader community at large. Anthem is driven by a tireless pursuit to deliver on our promises and build quality homes in desired communities designed to maximize livability. Like the city of Vancouver, Anthem is constantly improving and innovating the way things are done.

To further reinforce the vision of our communities and the company mission, Anthem looks at each municipality as a partner, supporting initiatives that give back to the local community and residents. In alignment with Anthem's Giving strategy, we seek to strengthen the communities we build in and assist those in need to reach their full potential. Anthem proudly honours Vancouver's progress and legacy.

We are Growing Places.

Inspired Design

- Inspired by the design, culture and community of South Granville
- Minimalist design principles, from architecture to interior design, by award-winning omb
- Quality concrete construction in a sophisticated form
- Ascending 11 storeys with stunning views of downtown Vancouver, Burrard Inlet and the North Shore mountains
- Distinguished breezeway, with a beautiful light feature, connects an elegant lobby to a landscaped central courtyard
- Private rooftop patios included with most townhomes for elevated entertaining and relaxing
- Water bibs for large terraces and penthouses (select homes)
- Extra-large 1.5x entry doors with stone threshold (most homes)

Interior Expression

- High-calibre finishes in a light or dark colour palette
- Modern wide-plank engineered-hardwood flooring flows throughout
- Ultra-quiet, high-efficiency LG stackable front-load washer and dryer (most homes)
- Ultra-quiet, high-efficiency LG side-by-side front-load washer and dryer with quartz stone countertop and organizational shelving (select homes)
- Comfort-assured air quality and temperature control with energy-efficient heating and cooling for the ideal climate year-round
- Airy 9' ceilings in living spaces
- Roller shade blinds on all windows for privacy and ambience
- Custom wood-veneer Italian millwork closets in primary bedroom help keep belongings neatly arranged

Lifestyle Amenities

- Indoor lounge with kitchenette and dining spaces for special celebrations
- Outdoor patio with full electric BBQ and dining area to beautifully entertain in the fresh air
- Fitness studio for convenient workouts
- Children's playground keeps kids active

European Kitchens

- Contemporary wood-veneer Italian cabinetry provides ample kitchen storage
- Intuitive design finishes, including under-cabinet LED lighting and soft-close hardware, offer everyday ease
- Elegant engineered-quartz stone countertops and backsplash
- Versatile island features contrasting porcelain countertop (select homes)
- Premium Italian Bertazzoni 30" integrated appliance package,* including:
 - Refrigerator with bottom-mount freezer
 - Ceramic induction cooktop
 - Electric convection wall oven
 - Electric convection speed oven
- Bertazzoni 24" integrated dishwasher
- Italian Faber under-cabinet integrated hood fan
- Single-basin undermount stainless steel sink with Baril brushed-chrome pull-down faucet

*Studios feature Bertazzoni 24" appliance package

Serene Bathrooms

- Custom wood-veneer Italian medicine cabinetry with mirror, integrated shelving and built-in LED lighting
- Dramatic terrazzo-inspired Italian porcelain wall tiles and complementing stone-inspired Italian flooring
- Tranquil glass-enclosed walk-in shower with rainfall showerhead and shower wand in all studio, one bedroom and two- and three-bedroom ensuites
- Spa-like deep soaker tub with Baril polished-chrome plumbing fixtures in secondary bathrooms
- Modern LAUFEN dual-flush toilet with soft-close seat
- Integrated LAUFEN BESPOKE vanity sinks and countertops
- Powder room features custom pendant lighting

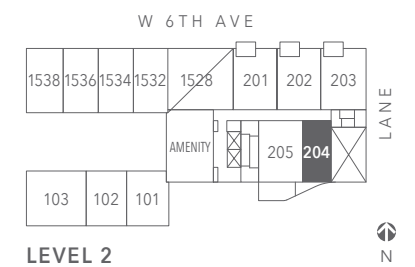
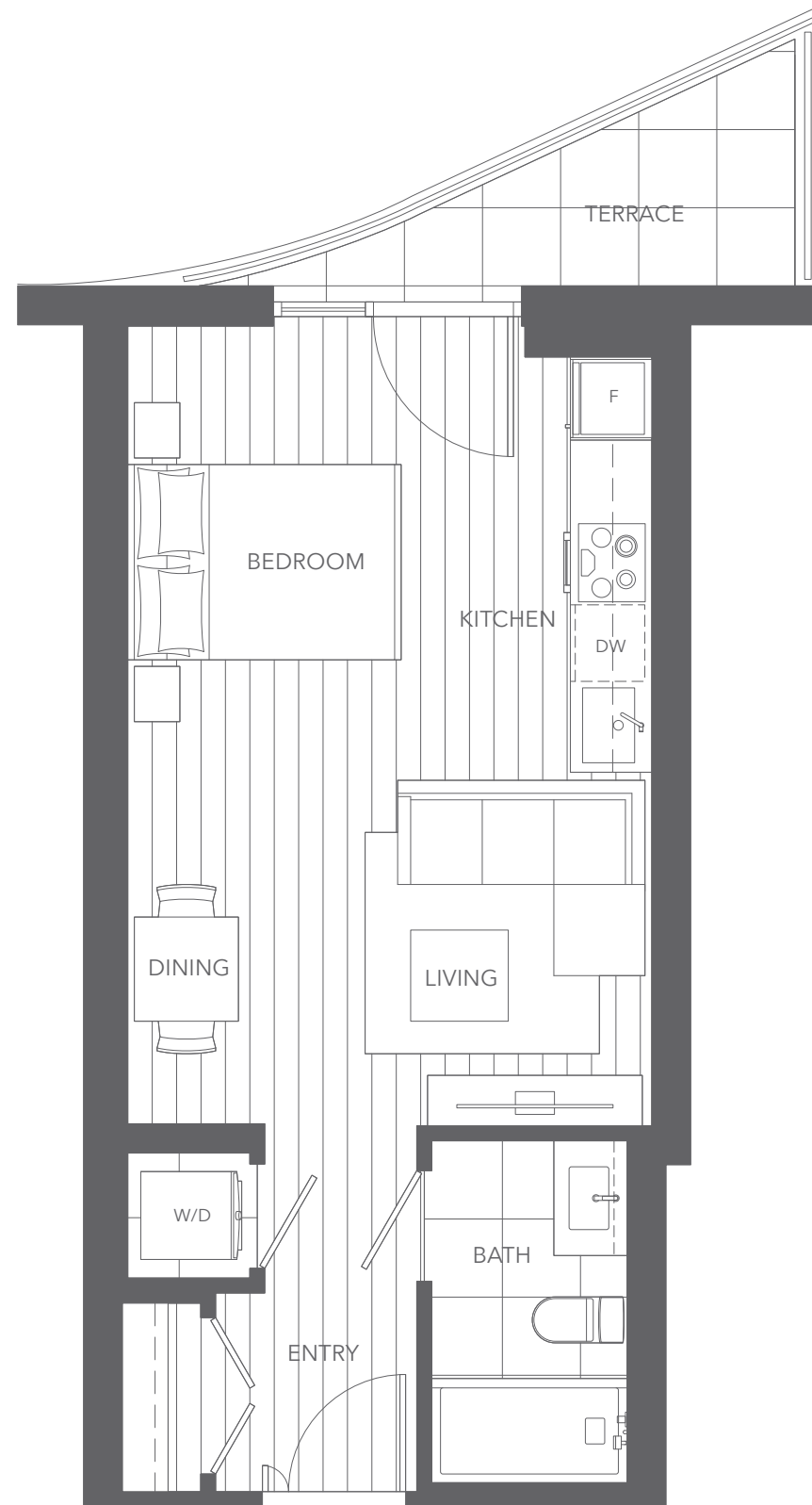
Peace of Mind

- 2-5-10 New Home Warranty
- Encrypted security key fob building access system
- Secure underground parkade complete with EV-ready parking stalls
- Expertly developed and built by Anthem
- Industry-leading Homeowner Care provided by Anthem



PLAN A STUDIO

LIVING 457 SF
OUTDOOR 50 SF
TOTAL 507 SF

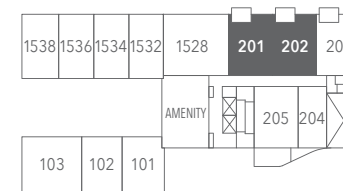


The developer reserves the right to make changes and modifications to the information contained herein. Floorplans and floorplates are subject to change without notice. Please contact a developer sales representative for details. This is not an offering for sale, as an offering can only be made after the filing of a disclosure statement, and only in jurisdictions where qualified in accordance with applicable local laws. E.&O.E.

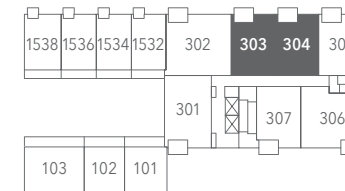
PLAN B

1 BEDROOM + DEN

LIVING 636 SF
 OUTDOOR 72 - 74 SF
 TOTAL 708 - 710 SF



LEVEL 2



LEVEL 3



LEVEL 4



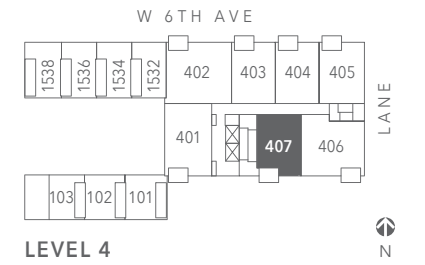
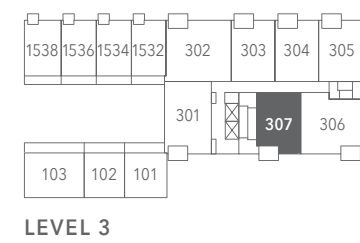
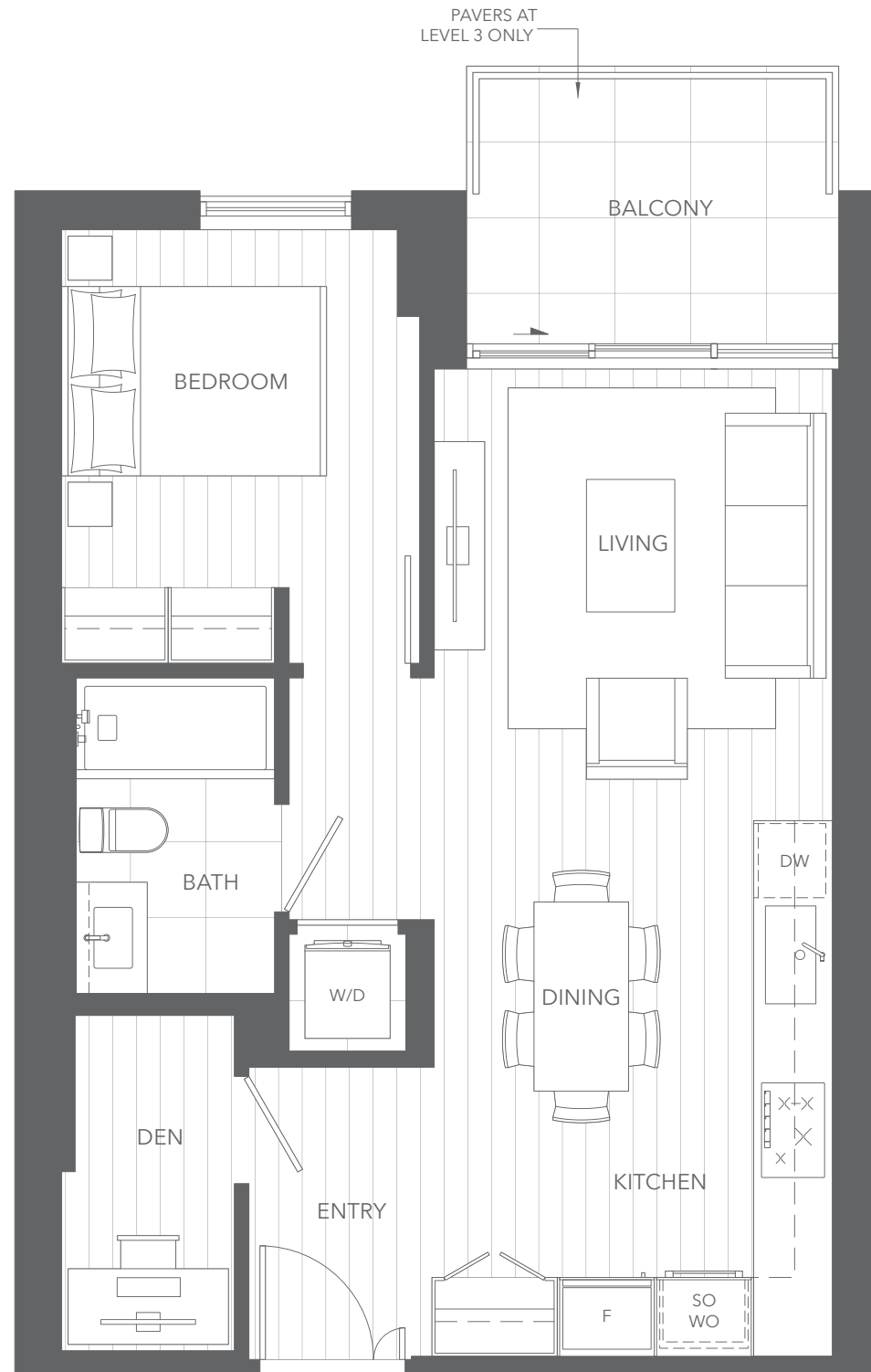
The developer reserves the right to make changes and modifications to the information contained herein. Floorplans and floorplates are subject to change without notice. Please contact a developer sales representative for details. This is not an offering for sale, as an offering can only be made after the filing of a disclosure statement, and only in jurisdictions where qualified in accordance with applicable local laws. E.&O.E.



PLAN B1

1 BEDROOM + DEN

LIVING 642 SF
 OUTDOOR 71 - 73 SF
 TOTAL 713 - 715 SF



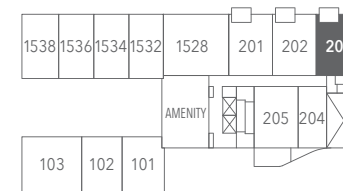
The developer reserves the right to make changes and modifications to the information contained herein. Floorplans and floorplates are subject to change without notice. Please contact a developer sales representative for details. This is not an offering for sale, as an offering can only be made after the filing of a disclosure statement, and only in jurisdictions where qualified in accordance with applicable local laws. E.&O.E.



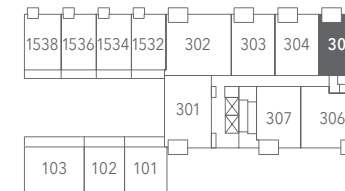
PLAN B2

1 BEDROOM + DEN

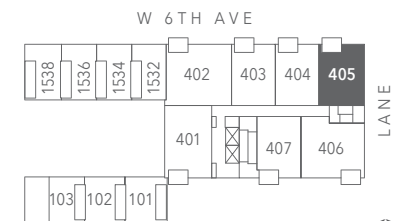
LIVING 657 - 659 SF
 OUTDOOR 74 - 76 SF
TOTAL 733 SF



LEVEL 2



LEVEL 3



LEVEL 4



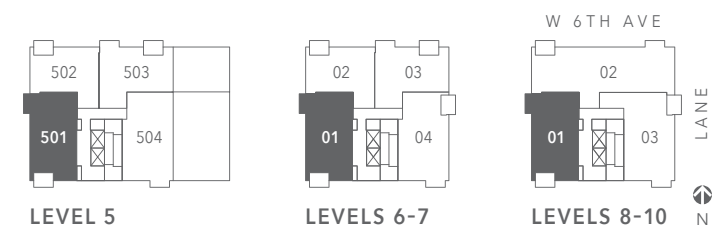
The developer reserves the right to make changes and modifications to the information contained herein. Floorplans and floorplates are subject to change without notice. Please contact a developer sales representative for details. This is not an offering for sale, as an offering can only be made after the filing of a disclosure statement, and only in jurisdictions where qualified in accordance with applicable local laws. E.&O.E.



PLAN C

2 BEDROOM + DEN

LIVING 1,037 - 1,038 SF
 OUTDOOR 75 - 76 SF
TOTAL 1,113 SF

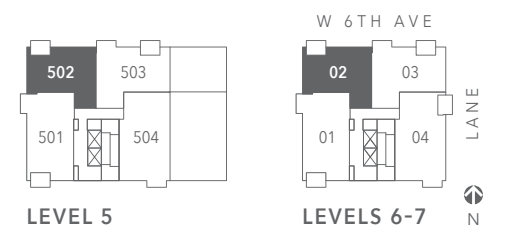


The developer reserves the right to make changes and modifications to the information contained herein. Floorplans and floorplates are subject to change without notice. Please contact a developer sales representative for details. This is not an offering for sale, as an offering can only be made after the filing of a disclosure statement, and only in jurisdictions where qualified in accordance with applicable local laws. E.&O.E.

PLAN C1

2 BEDROOM + DEN

LIVING	820 SF
OUTDOOR	76 SF
TOTAL	896 SF



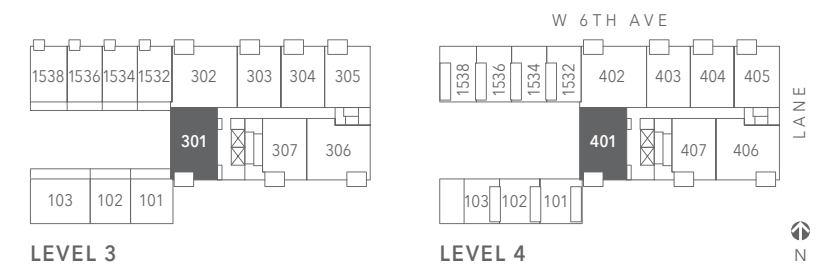
The developer reserves the right to make changes and modifications to the information contained herein. Floorplans and floorplates are subject to change without notice. Please contact a developer sales representative for details. This is not an offering for sale, as an offering can only be made after the filing of a disclosure statement, and only in jurisdictions where qualified in accordance with applicable local laws. E.&O.E.



PLAN C2

JR 2 BEDROOM + DEN

LIVING 813 SF
 OUTDOOR 71 - 76 SF
 TOTAL 884 - 889 SF



The developer reserves the right to make changes and modifications to the information contained herein. Floorplans and floorplates are subject to change without notice. Please contact a developer sales representative for details. This is not an offering for sale, as an offering can only be made after the filing of a disclosure statement, and only in jurisdictions where qualified in accordance with applicable local laws. E.&O.E.

PLAN C4

2 BEDROOM + DEN

LIVING 952 SF
 OUTDOOR 636 SF
 TOTAL 1,588 SF





PLAN C5

2 BEDROOM + DEN

LIVING 948 SF
OUTDOOR 69 SF
TOTAL 1,017 SF



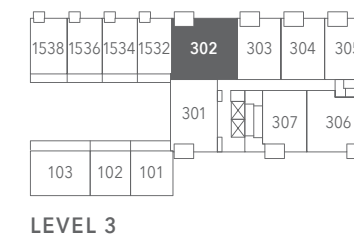
The developer reserves the right to make changes and modifications to the information contained herein. Floorplans and floorplates are subject to change without notice. Please contact a developer sales representative for details. This is not an offering for sale, as an offering can only be made after the filing of a disclosure statement, and only in jurisdictions where qualified in accordance with applicable local laws. E.&O.E.



PLAN C6

2 BEDROOM + DEN

LIVING 971 - 995 SF
 OUTDOOR 72 SF
TOTAL 1,043 - 1,067 SF



The developer reserves the right to make changes and modifications to the information contained herein. Floorplans and floorplates are subject to change without notice. Please contact a developer sales representative for details. This is not an offering for sale, as an offering can only be made after the filing of a disclosure statement, and only in jurisdictions where qualified in accordance with applicable local laws. E.&O.E.

PLAN C8

2 BEDROOM + DEN

LIVING 1,084 SF
 OUTDOOR 75 SF
 TOTAL 1,159 SF





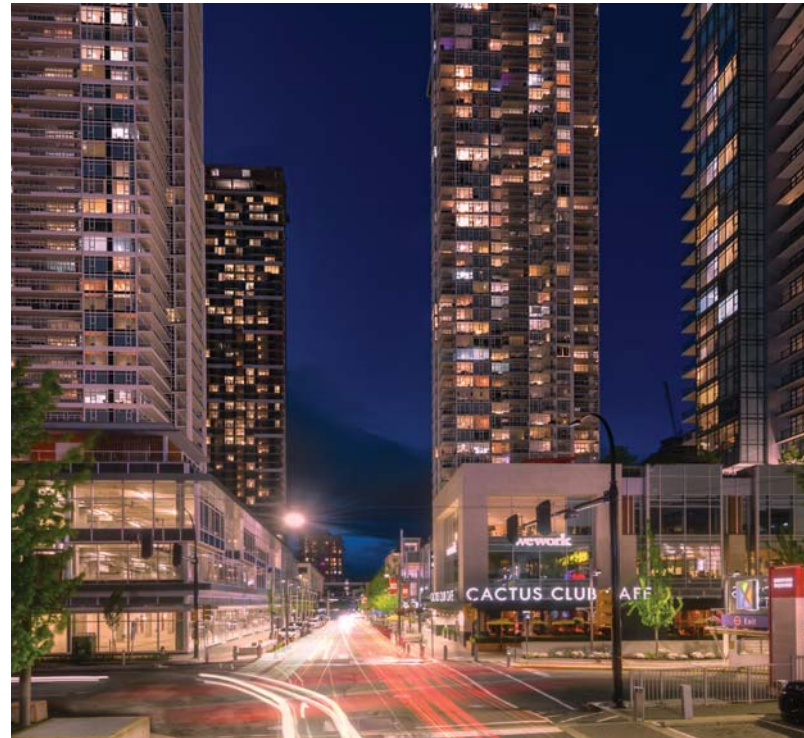
PLAN C9

2 BEDROOM + DEN

LIVING 1,127 SF
OUTDOOR 1,172 SF
TOTAL 2,299 SF



The developer reserves the right to make changes and modifications to the information contained herein. Floorplans and floorplates are subject to change without notice. Please contact a developer sales representative for details. This is not an offering for sale, as an offering can only be made after the filing of a disclosure statement, and only in jurisdictions where qualified in accordance with applicable local laws. E.&O.E.



Station Square | Burnaby



Qube | Vancouver



West Third | North Vancouver

Founded in 1991, Anthem is a team of 450 people driven by creativity, passion and direct communication. Anthem and Anthem United have invested in, developed or managed - alone or in partnership - more than 270 residential, commercial and retail projects with an aggregate value of more than \$6 billion across western North America.

Our growing residential portfolio includes 17,500 homes that are complete, in design or under construction, from master planned mixed-use residential and multi-family, to townhome and single-family communities.

We own, co-own and manage 8.5 million square feet of retail, industrial, residential rental and office space. We have developed more than 60 communities and currently hold over 6,100 acres of land across Alberta, British Columbia and California.

Anthem is a real estate development, investment and management company that strives, solves and evolves to create better spaces and stronger communities.

We are Growing Places.

The developer reserves the right to make changes and modifications to the information contained herein. Maps, views, photography, and renderings are representational only and are not necessarily accurate, and final design, construction, and features may differ. Floor plans, layouts, finishes, prices, and availability are subject to change without notice. Please contact a developer sales representative for details. This is not an offering for sale, as an offering can only be made after the filing of a disclosure statement, and only in jurisdictions where qualified in accordance with local laws. E.&O.E. v28.05.2021

DESIGN
CULTURE
COMMUNITY



FormByAnthem.com

