

VANCOUVER HOUSE

ESTATE 5201



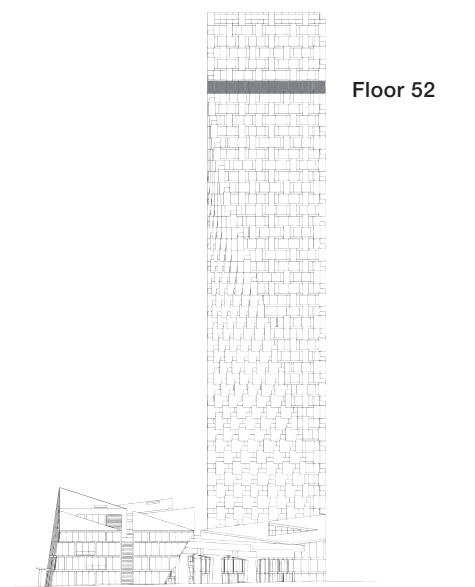
THREE BEDROOM & FAMILY ROOM

TOTAL LIVING 3575 SQ FT

Indoor Living 2737 sq ft

Outdoor Living 838 sq ft

- Spanning entire south façade of Vancouver House with unobstructed views from False Creek to English Bay
- Boffi chef's kitchen featuring Miele appliances and custom BIG-designed Corian island
- Master bedroom with marble clad five-piece ensuite and dressing room
- Guest bedrooms with ensuites and a private flex space ideal for live-in housekeeper



westbank



Renderings are representational only. E.& O.E.