

# Penthouse 8

Two Bedroom

Total Living 3120 sf Indoor Living 1739 sf Outdoor Living 1381 sf

Situated on the highest floors of Vancouver House, floor to ceiling windows boast unobstructed views of False Creek and Mount Baker. The open concept living area and Boffi chef's kitchen offer access to the outdoor terrace and are perfect for entertaining. The master bedroom features a deluxe clad marble five-piece ensuite and spacious dressing room. The expansive roof terrace is the focal point of this home with a private hot tub that will make you feel far away from the city.



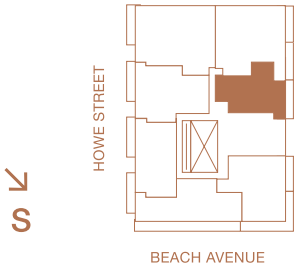
westbank

BIG

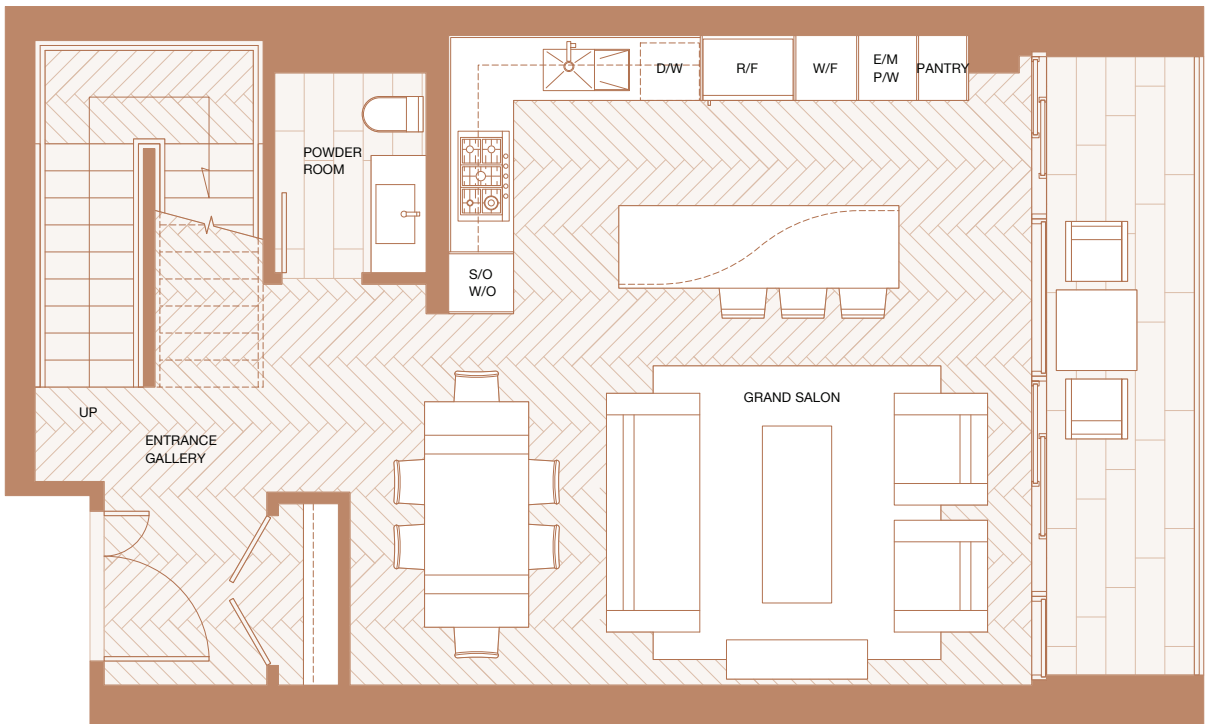
# Lower Floor

Indoor Living 757 sf

Outdoor Living 117 sf



PENTHOUSE 00



VANCOUVER  
HOUSE



west bank



Renderings are representational only. E.&O.E.

# Upper Floor

Indoor Living 982 sf

Outdoor Living 176 sf



PENTHOUSE 00

VANCOUVER  
HOUSE



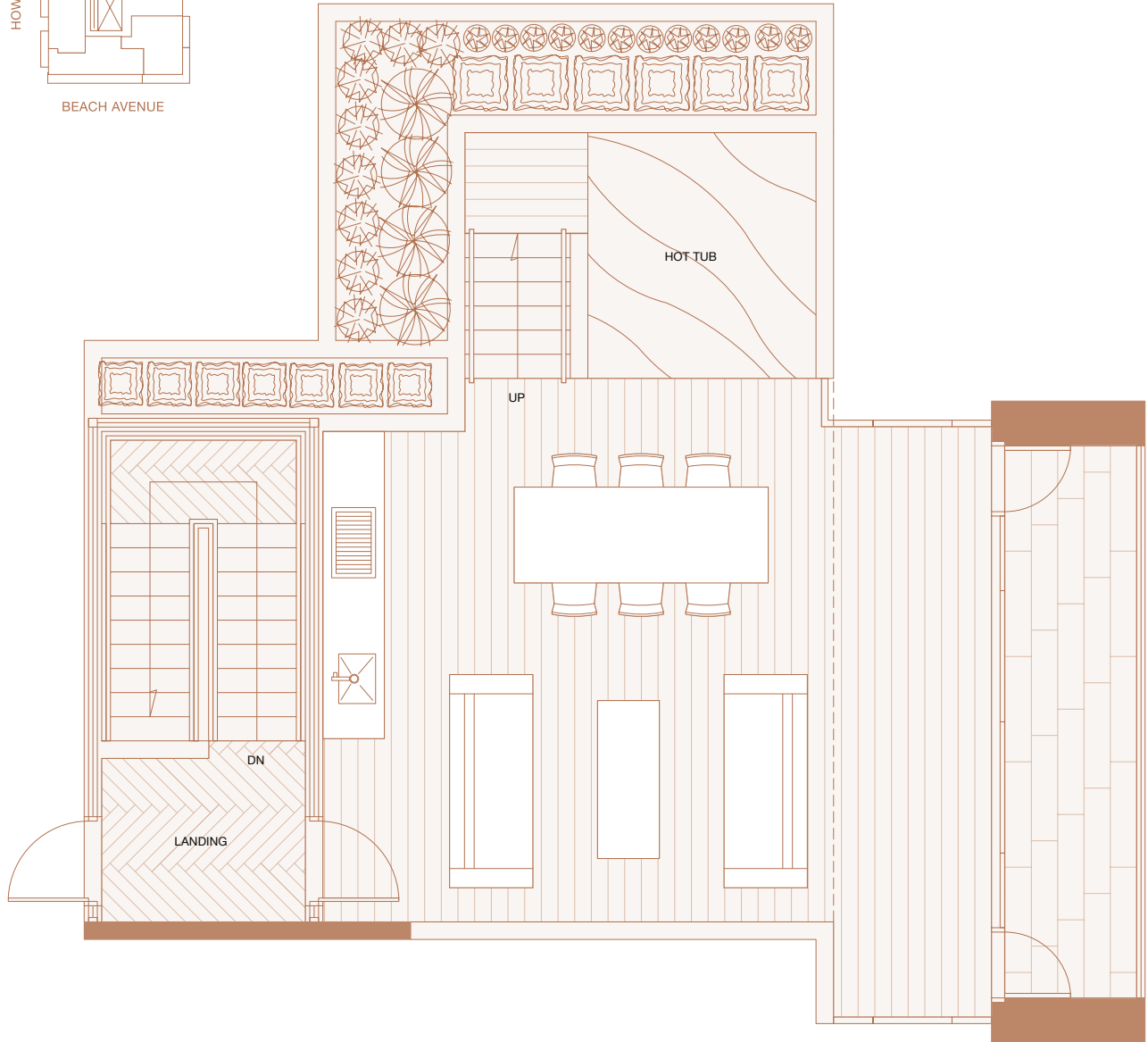
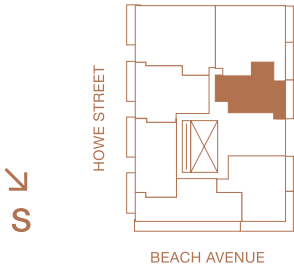
westbank



Renderings are representational only. E.&O.E.

# Roof Terrace

Outdoor Living 1088 sf



PENTHOUSE 00

VANCOUVER  
HOUSE



westbank



Renderings are representational only. E.&O.E.