

# FEATURES AND SPECIFICATIONS

## IMPECCABLE ARCHITECTURE

- Architectural design by Karl Gustavson that pays homage to the community by incorporating elements of glass, steel, stone and wood-inspired metal panelling
- Built to LEED Silver equivalent boasting energy-efficiency, health indoor air quality, and sustainable materials and finishes
- A limited collection of only 16 stately-designed concrete homes nestled in the heart of Ambleside
- Three-storey concrete construction featuring four spacious retail spaces on the ground floor
- Private residents-only interior courtyard with cultivated landscaping and foliage by Eta Landscape Architecture
- Triple-pane\* aluminum windows on all Marine Drive facing homes

## ELEGANT INTERIORS

- Considerate and seamlessly designed homes by highly-respected local interior designer Cristina Oberti
- Thoughtfully included Italian custom millwork details by Arclinea:
  - Media display area
  - Built-in bar area with integrated 24" full-height Sub-Zero wine refrigerator\*
  - Solid imported Italian closet shelving and storage organizers
- Selection of two colour palettes curated by Cristina Oberti Interior Design:
  - Light
  - Dark
- Superior engineered hardwood flooring throughout
- Ceiling mount fan coil units provide heat and air conditioning for a comfortable interior environment year-round

## CHEF KITCHENS

- Imported flat-panel Italian cabinetry with soft-close drawers from Arclinea
- Solid polished quartz stone countertops
- Full-height marble backsplashes
- Professional-grade appliance package featuring seamless millwork integration:
  - 30" Sub-Zero refrigerator with double freezer drawers and ice maker
  - 30" Wolf stainless steel 4-burner gas cooktop
  - 30" Wolf black and stainless steel wall hood fan
  - 30" Wolf stainless steel wall oven
  - 30" Wolf stainless steel steam oven
  - 24" Asko high-efficiency dishwasher
- Polished chrome Kallista single-lever faucet with pullout hand spray
- Modern under-mount, single-bowl stainless steel Kohler sink
- Equipped pantries with full-extension pull out drawers\*
- Pullout waste and recycling bins

## OPULENT BATHROOMS

- Vanities made in Italy entirely clad in marble stone from SCIC
- Mirrored Italian import medicine cabinets with integrated LED lighting
- Solid polished marble countertops
- Sleek polished chrome Kohler faucets
- Contemporary Kohler under-mount rectangular vanity basin
- Invigorating polished chrome Kohler rain shower head with hand shower
- Italian marble mosaic tiled shower base in master ensuite
- Frameless glass shower enclosure in master ensuite
- Wall-mount Kohler flush toilet with soft close seat

- Soaker tub with Italian marble base surround
- Floor-to-ceiling Italian porcelain tiled walls
- Nuheat™ in-floor heating in all bathrooms

## UTILITIES

- 24" Asko side-by-side high-efficiency vented washer and dryer
- Laundry closets with custom counter and millwork shelving
- Porcelain tiled flooring in laundry closets
- Ultra-quiet automated roller window blinds
- Pre-wiring to allow for future technology additions including surveillance and alarm

## AMENITIES

- Welcoming residential lobby impeccably designed by Cristina Oberti Interior Design
- Secure FOB and key access to underground parking, storage and bicycle storage
- Elegantly appointed residential elevators with restricted floor access
- Video surveillance at all building entry points
- Underground car washing station
- Underground pet washing station
- Underground bicycle maintenance bench by bicycle storage

## WARRANTY

- 2-5-10 Home Warranty

## THE RESIDENCES ON MARINE

### RESIDENCE 100

\*Select Homes. The Developer reserves the right to make modifications and changes to the information contained herein. Dimensions, sizes, specifications, layouts and materials are approximate only and subject to change without notice. E.&O.E.

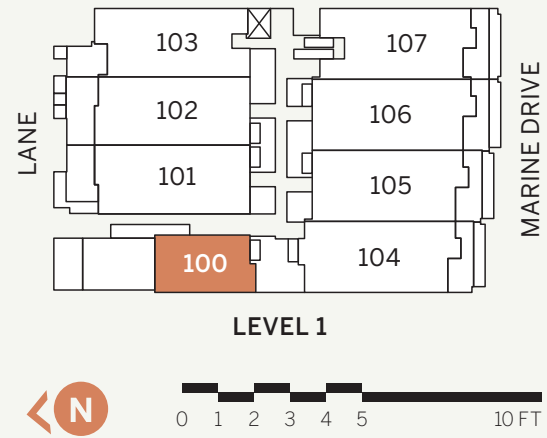
# RESIDENCE 100

## 1 Bedroom + 1 Bath

Indoor: 636 sq.ft.

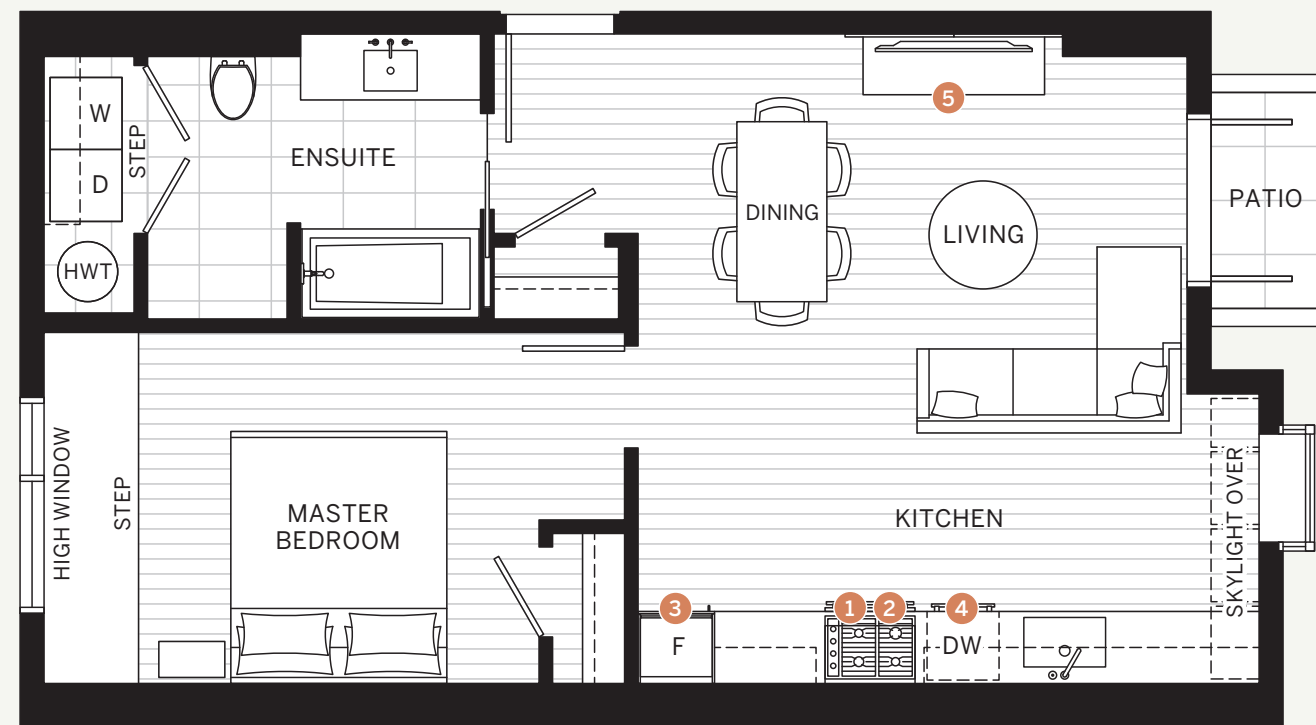
Outdoor: 18 sq.ft.

View: North



- ① 30" Wolf stainless steel 4-burner gas cooktop with 30" Wolf black and stainless steel hood fan
- ② 30" Wolf stainless steel oven
- ③ 30" Sub-Zero integrated refrigerator with double freezer drawers and ice maker

- ④ 24" Asko integrated dishwasher
- ⑤ Media display area in living room with Italian cabinetry from Arclinea



The Developer reserves the right to make modifications and changes to the information contained herein. Dimensions, sizes, specifications, layouts and materials are approximate only and subject to change without notice. E.&O.E.

**THE RESIDENCES**  
ON MARINE

# FEATURES AND SPECIFICATIONS

## IMPECCABLE ARCHITECTURE

- Architectural design by Karl Gustavson that pays homage to the community by incorporating elements of glass, steel, stone and wood-inspired metal panelling
- Built to LEED Silver equivalent boasting energy-efficiency, health indoor air quality, and sustainable materials and finishes
- A limited collection of only 16 stately-designed concrete homes nestled in the heart of Ambleside
- Three-storey concrete construction featuring four spacious retail spaces on the ground floor
- Private residents-only interior courtyard with cultivated landscaping and foliage by Eta Landscape Architecture
- Triple-pane\* aluminum windows on all Marine Drive facing homes

## ELEGANT INTERIORS

- Considerate and seamlessly designed homes by highly-respected local interior designer Cristina Oberti
- Thoughtfully included Italian custom millwork details by Arclinea:
  - Media display area
  - Built-in bar area with integrated 24" full-height Sub-Zero wine refrigerator\*
  - Solid imported Italian closet shelving and storage organizers
- Selection of two colour palettes curated by Cristina Oberti Interior Design:
  - Light
  - Dark
- Superior engineered hardwood flooring throughout
- Ceiling mount fan coil units provide heat and air conditioning for a comfortable interior environment year-round

## CHEF KITCHENS

- Imported flat-panel Italian cabinetry with soft-close drawers from Arclinea
- Solid polished quartz stone countertops
- Full-height marble backsplashes
- Professional-grade appliance package featuring seamless millwork integration:
  - 30" Sub-Zero refrigerator with double freezer drawers and ice maker
  - 30" Wolf stainless steel 4-burner gas cooktop
  - 30" Wolf black and stainless steel wall hood fan
  - 30" Wolf stainless steel wall oven
  - 30" Wolf stainless steel steam oven
  - 24" Asko high-efficiency dishwasher
- Polished chrome Kallista single-lever faucet with pullout hand spray
- Modern under-mount, single-bowl stainless steel Kohler sink
- Equipped pantries with full-extension pull out drawers\*
- Pullout waste and recycling bins

## OPULENT BATHROOMS

- Vanities made in Italy entirely clad in marble stone from SCIC
- Mirrored Italian import medicine cabinets with integrated LED lighting
- Solid polished marble countertops
- Sleek polished chrome Kohler faucets
- Contemporary Kohler under-mount rectangular vanity basin
- Invigorating polished chrome Kohler rain shower head with hand shower
- Italian marble mosaic tiled shower base in master ensuite
- Frameless glass shower enclosure in master ensuite
- Wall-mount Kohler flush toilet with soft close seat

- Soaker tub with Italian marble base surround
- Floor-to-ceiling Italian porcelain tiled walls
- Nuheat™ in-floor heating in all bathrooms

## UTILITIES

- 24" Asko side-by-side high-efficiency vented washer and dryer
- Laundry closets with custom counter and millwork shelving
- Porcelain tiled flooring in laundry closets
- Ultra-quiet automated roller window blinds
- Pre-wiring to allow for future technology additions including surveillance and alarm

## AMENITIES

- Welcoming residential lobby impeccably designed by Cristina Oberti Interior Design
- Secure FOB and key access to underground parking, storage and bicycle storage
- Elegantly appointed residential elevators with restricted floor access
- Video surveillance at all building entry points
- Underground car washing station
- Underground pet washing station
- Underground bicycle maintenance bench by bicycle storage

## WARRANTY

- 2-5-10 Home Warranty

## THE RESIDENCES ON MARINE

### RESIDENCE 101

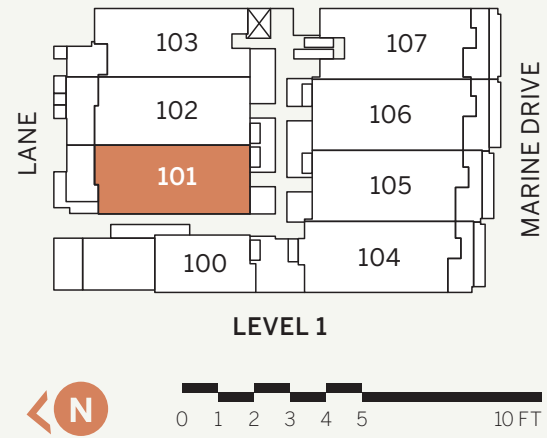
# RESIDENCE 101

## 3 Bedroom + 2 Bath + Flex

Indoor: 1236 sq.ft.

Outdoor: 187 sq.ft.

View: North



- ① 30" Wolf stainless steel 4-burner gas cooktop with 30" Wolf black and stainless steel hood fan
- ② 30" Wolf stainless steel wall oven and steam oven
- ③ 30" Sub-Zero integrated refrigerator with double freezer drawers and ice maker
- ④ 24" Asko integrated dishwasher
- ⑤ Italian-made pantries with full-extension pull out drawers by Arclinea
- ⑥ 30" Sub-Zero integrated full-height wine refrigerator
- ⑦ Built-in bar area featuring Italian millwork by Arclinea
- ⑧ Media display area in living room with Italian cabinetry from Arclinea



The Developer reserves the right to make modifications and changes to the information contained herein. Dimensions, sizes, specifications, layouts and materials are approximate only and subject to change without notice. E.&O.E.

**THE RESIDENCES**  
ON MARINE

# FEATURES AND SPECIFICATIONS

## IMPECCABLE ARCHITECTURE

- Architectural design by Karl Gustavson that pays homage to the community by incorporating elements of glass, steel, stone and wood-inspired metal panelling
- Built to LEED Silver equivalent boasting energy-efficiency, health indoor air quality, and sustainable materials and finishes
- A limited collection of only 16 stately-designed concrete homes nestled in the heart of Ambleside
- Three-storey concrete construction featuring four spacious retail spaces on the ground floor
- Private residents-only interior courtyard with cultivated landscaping and foliage by Eta Landscape Architecture
- Triple-pane\* aluminum windows on all Marine Drive facing homes

## ELEGANT INTERIORS

- Considerate and seamlessly designed homes by highly-respected local interior designer Cristina Oberti
- Thoughtfully included Italian custom millwork details by Arclinea:
  - Media display area
  - Built-in bar area with integrated 24" full-height Sub-Zero wine refrigerator\*
  - Solid imported Italian closet shelving and storage organizers
- Selection of two colour palettes curated by Cristina Oberti Interior Design:
  - Light
  - Dark
- Superior engineered hardwood flooring throughout
- Ceiling mount fan coil units provide heat and air conditioning for a comfortable interior environment year-round

## CHEF KITCHENS

- Imported flat-panel Italian cabinetry with soft-close drawers from Arclinea
- Solid polished quartz stone countertops
- Full-height marble backsplashes
- Professional-grade appliance package featuring seamless millwork integration:
  - 30" Sub-Zero refrigerator with double freezer drawers and ice maker
  - 30" Wolf stainless steel 4-burner gas cooktop
  - 30" Wolf black and stainless steel wall hood fan
  - 30" Wolf stainless steel wall oven
  - 30" Wolf stainless steel steam oven
  - 24" Asko high-efficiency dishwasher
- Polished chrome Kallista single-lever faucet with pullout hand spray
- Modern under-mount, single-bowl stainless steel Kohler sink
- Equipped pantries with full-extension pull out drawers\*
- Pullout waste and recycling bins

## OPULENT BATHROOMS

- Vanities made in Italy entirely clad in marble stone from SCIC
- Mirrored Italian import medicine cabinets with integrated LED lighting
- Solid polished marble countertops
- Sleek polished chrome Kohler faucets
- Contemporary Kohler under-mount rectangular vanity basin
- Invigorating polished chrome Kohler rain shower head with hand shower
- Italian marble mosaic tiled shower base in master ensuite
- Frameless glass shower enclosure in master ensuite
- Wall-mount Kohler flush toilet with soft close seat

- Soaker tub with Italian marble base surround
- Floor-to-ceiling Italian porcelain tiled walls
- Nuheat™ in-floor heating in all bathrooms

## UTILITIES

- 24" Asko side-by-side high-efficiency vented washer and dryer
- Laundry closets with custom counter and millwork shelving
- Porcelain tiled flooring in laundry closets
- Ultra-quiet automated roller window blinds
- Pre-wiring to allow for future technology additions including surveillance and alarm

## AMENITIES

- Welcoming residential lobby impeccably designed by Cristina Oberti Interior Design
- Secure FOB and key access to underground parking, storage and bicycle storage
- Elegantly appointed residential elevators with restricted floor access
- Video surveillance at all building entry points
- Underground car washing station
- Underground pet washing station
- Underground bicycle maintenance bench by bicycle storage

## WARRANTY

- 2-5-10 Home Warranty

## THE RESIDENCES ON MARINE

### RESIDENCE 102

\*Select Homes. The Developer reserves the right to make modifications and changes to the information contained herein. Dimensions, sizes, specifications, layouts and materials are approximate only and subject to change without notice. E.&O.E.

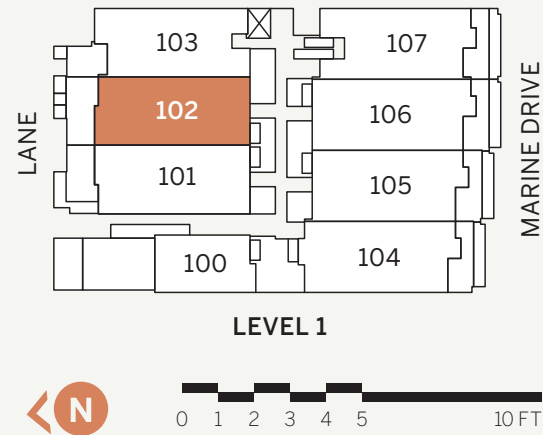
# RESIDENCE 102

## 3 Bedroom + 2 Bath + Flex

Indoor: 1248 sq.ft.

Outdoor: 235 sq.ft.

View: North



- ① 30" Wolf stainless steel 4-burner gas cooktop with 30" Wolf black and stainless steel hood fan
- ② 30" Wolf stainless steel wall oven and steam oven
- ③ 30" Sub-Zero integrated refrigerator with double freezer drawers and ice maker
- ④ 24" Asko integrated dishwasher
- ⑤ Italian-made pantries with full-extension pull out drawers by Arclinea
- ⑥ 30" Sub-Zero integrated full-height wine refrigerator
- ⑦ Built-in bar area featuring Italian millwork by Arclinea
- ⑧ Media display area in living room with Italian cabinetry from Arclinea



The Developer reserves the right to make modifications and changes to the information contained herein. Dimensions, sizes, specifications, layouts and materials are approximate only and subject to change without notice. E.&O.E.

**THE RESIDENCES**  
ON MARINE



# FEATURES AND SPECIFICATIONS

## IMPECCABLE ARCHITECTURE

- Architectural design by Karl Gustavson that pays homage to the community by incorporating elements of glass, steel, stone and wood-inspired metal panelling
- Built to LEED Silver equivalent boasting energy-efficiency, health indoor air quality, and sustainable materials and finishes
- A limited collection of only 16 stately-designed concrete homes nestled in the heart of Ambleside
- Three-storey concrete construction featuring four spacious retail spaces on the ground floor
- Private residents-only interior courtyard with cultivated landscaping and foliage by Eta Landscape Architecture
- Triple-pane\* aluminum windows on all Marine Drive facing homes

## ELEGANT INTERIORS

- Considerate and seamlessly designed homes by highly-respected local interior designer Cristina Oberti
- Thoughtfully included Italian custom millwork details by Arclinea:
  - Media display area
  - Built-in bar area with integrated 24" full-height Sub-Zero wine refrigerator\*
  - Solid imported Italian closet shelving and storage organizers
- Selection of two colour palettes curated by Cristina Oberti Interior Design:
  - Light
  - Dark
- Superior engineered hardwood flooring throughout
- Ceiling mount fan coil units provide heat and air conditioning for a comfortable interior environment year-round

## CHEF KITCHENS

- Imported flat-panel Italian cabinetry with soft-close drawers from Arclinea
- Solid polished quartz stone countertops
- Full-height marble backsplashes
- Professional-grade appliance package featuring seamless millwork integration:
  - 30" Sub-Zero refrigerator with double freezer drawers and ice maker
  - 30" Wolf stainless steel 4-burner gas cooktop
  - 30" Wolf black and stainless steel wall hood fan
  - 30" Wolf stainless steel wall oven
  - 30" Wolf stainless steel steam oven
  - 24" Asko high-efficiency dishwasher
- Polished chrome Kallista single-lever faucet with pullout hand spray
- Modern under-mount, single-bowl stainless steel Kohler sink
- Equipped pantries with full-extension pull out drawers\*
- Pullout waste and recycling bins

## OPULENT BATHROOMS

- Vanities made in Italy entirely clad in marble stone from SCIC
- Mirrored Italian import medicine cabinets with integrated LED lighting
- Solid polished marble countertops
- Sleek polished chrome Kohler faucets
- Contemporary Kohler under-mount rectangular vanity basin
- Invigorating polished chrome Kohler rain shower head with hand shower
- Italian marble mosaic tiled shower base in master ensuite
- Frameless glass shower enclosure in master ensuite
- Wall-mount Kohler flush toilet with soft close seat

- Soaker tub with Italian marble base surround
- Floor-to-ceiling Italian porcelain tiled walls
- Nuheat™ in-floor heating in all bathrooms

## UTILITIES

- 24" Asko side-by-side high-efficiency vented washer and dryer
- Laundry closets with custom counter and millwork shelving
- Porcelain tiled flooring in laundry closets
- Ultra-quiet automated roller window blinds
- Pre-wiring to allow for future technology additions including surveillance and alarm

## AMENITIES

- Welcoming residential lobby impeccably designed by Cristina Oberti Interior Design
- Secure FOB and key access to underground parking, storage and bicycle storage
- Elegantly appointed residential elevators with restricted floor access
- Video surveillance at all building entry points
- Underground car washing station
- Underground pet washing station
- Underground bicycle maintenance bench by bicycle storage

## WARRANTY

- 2-5-10 Home Warranty

## THE RESIDENCES ON MARINE

### RESIDENCE 103

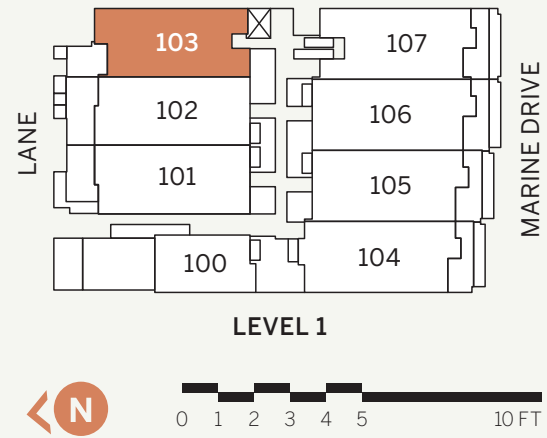
# RESIDENCE 103

## 2 Bedroom + 2 Bath + Flex

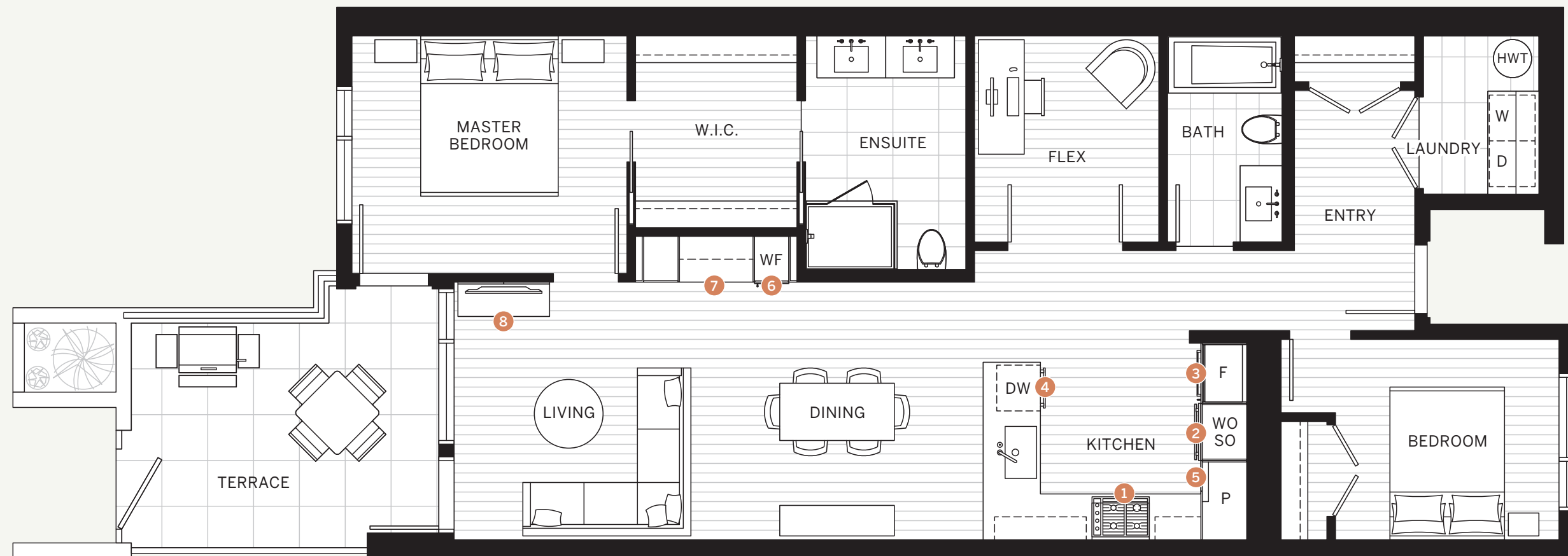
Indoor: 1150 sq.ft.

Outdoor: 142 sq.ft.

View: North



- ① 30" Wolf stainless steel 4-burner gas cooktop with 30" Wolf black and stainless steel hood fan
- ② 30" Wolf stainless steel wall oven and steam oven
- ③ 30" Sub-Zero integrated refrigerator with double freezer drawers and ice maker
- ④ 24" Asko integrated dishwasher
- ⑤ Italian-made pantries with full-extension pull out drawers by Arclinea
- ⑥ 30" Sub-Zero integrated full-height wine refrigerator
- ⑦ Built-in bar area featuring Italian millwork by Arclinea
- ⑧ Media display area in living room with Italian cabinetry from Arclinea



The Developer reserves the right to make modifications and changes to the information contained herein. Dimensions, sizes, specifications, layouts and materials are approximate only and subject to change without notice. E.&O.E.

**THE RESIDENCES**  
ON MARINE



# FEATURES AND SPECIFICATIONS

## IMPECCABLE ARCHITECTURE

- Architectural design by Karl Gustavson that pays homage to the community by incorporating elements of glass, steel, stone and wood-inspired metal panelling
- Built to LEED Silver equivalent boasting energy-efficiency, health indoor air quality, and sustainable materials and finishes
- A limited collection of only 16 stately-designed concrete homes nestled in the heart of Ambleside
- Three-storey concrete construction featuring four spacious retail spaces on the ground floor
- Private residents-only interior courtyard with cultivated landscaping and foliage by Eta Landscape Architecture
- Triple-pane\* aluminum windows on all Marine Drive facing homes

## ELEGANT INTERIORS

- Considerate and seamlessly designed homes by highly-respected local interior designer Cristina Oberti
- Thoughtfully included Italian custom millwork details by Arclinea:
  - Media display area
  - Built-in bar area with integrated 24" full-height Sub-Zero wine refrigerator\*
  - Solid imported Italian closet shelving and storage organizers
- Selection of two colour palettes curated by Cristina Oberti Interior Design:
  - Light
  - Dark
- Superior engineered hardwood flooring throughout
- Ceiling mount fan coil units provide heat and air conditioning for a comfortable interior environment year-round

## CHEF KITCHENS

- Imported flat-panel Italian cabinetry with soft-close drawers from Arclinea
- Solid polished quartz stone countertops
- Full-height marble backsplashes
- Professional-grade appliance package featuring seamless millwork integration:
  - 30" Sub-Zero refrigerator with double freezer drawers and ice maker
  - 30" Wolf stainless steel 4-burner gas cooktop
  - 30" Wolf black and stainless steel wall hood fan
  - 30" Wolf stainless steel wall oven
  - 30" Wolf stainless steel steam oven
  - 24" Asko high-efficiency dishwasher
- Polished chrome Kallista single-lever faucet with pullout hand spray
- Modern under-mount, single-bowl stainless steel Kohler sink
- Equipped pantries with full-extension pull out drawers\*
- Pullout waste and recycling bins

## OPULENT BATHROOMS

- Vanities made in Italy entirely clad in marble stone from SCIC
- Mirrored Italian import medicine cabinets with integrated LED lighting
- Solid polished marble countertops
- Sleek polished chrome Kohler faucets
- Contemporary Kohler under-mount rectangular vanity basin
- Invigorating polished chrome Kohler rain shower head with hand shower
- Italian marble mosaic tiled shower base in master ensuite
- Frameless glass shower enclosure in master ensuite
- Wall-mount Kohler flush toilet with soft close seat

- Soaker tub with Italian marble base surround
- Floor-to-ceiling Italian porcelain tiled walls
- Nuheat™ in-floor heating in all bathrooms

## UTILITIES

- 24" Asko side-by-side high-efficiency vented washer and dryer
- Laundry closets with custom counter and millwork shelving
- Porcelain tiled flooring in laundry closets
- Ultra-quiet automated roller window blinds
- Pre-wiring to allow for future technology additions including surveillance and alarm

## AMENITIES

- Welcoming residential lobby impeccably designed by Cristina Oberti Interior Design
- Secure FOB and key access to underground parking, storage and bicycle storage
- Elegantly appointed residential elevators with restricted floor access
- Video surveillance at all building entry points
- Underground car washing station
- Underground pet washing station
- Underground bicycle maintenance bench by bicycle storage

## WARRANTY

- 2-5-10 Home Warranty

## THE RESIDENCES ON MARINE

### RESIDENCE 104

\*Select Homes. The Developer reserves the right to make modifications and changes to the information contained herein. Dimensions, sizes, specifications, layouts and materials are approximate only and subject to change without notice. E.&O.E.

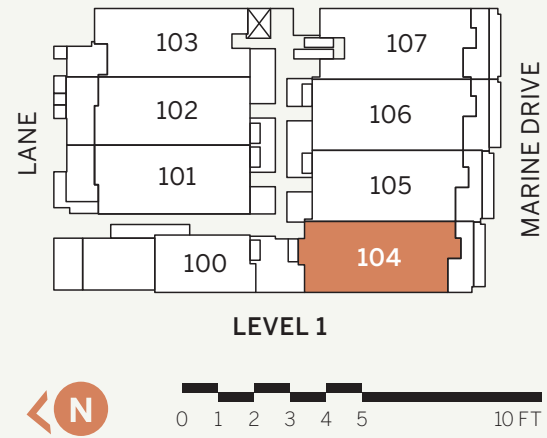
# RESIDENCE 104

## 2 Bedroom + 2 Bath + Flex

Indoor: 1252 sq.ft.

Outdoor: 156 sq.ft.

View: South



- ① 30" Wolf stainless steel 4-burner gas cooktop with 30" Wolf black and stainless steel hood fan
- ② 30" Wolf stainless steel wall oven and steam oven
- ③ 30" Sub-Zero integrated refrigerator with double freezer drawers and ice maker
- ④ 24" Asko integrated dishwasher
- ⑤ Italian-made pantries with full-extension pull out drawers by Arclinea
- ⑥ 30" Sub-Zero integrated full-height wine refrigerator
- ⑦ Built-in bar area featuring Italian millwork by Arclinea
- ⑧ Media display area in living room with Italian cabinetry from Arclinea



The Developer reserves the right to make modifications and changes to the information contained herein. Dimensions, sizes, specifications, layouts and materials are approximate only and subject to change without notice. E.&O.E.

**THE RESIDENCES**  
ON MARINE

# FEATURES AND SPECIFICATIONS

## IMPECCABLE ARCHITECTURE

- Architectural design by Karl Gustavson that pays homage to the community by incorporating elements of glass, steel, stone and wood-inspired metal panelling
- Built to LEED Silver equivalent boasting energy-efficiency, health indoor air quality, and sustainable materials and finishes
- A limited collection of only 16 stately-designed concrete homes nestled in the heart of Ambleside
- Three-storey concrete construction featuring four spacious retail spaces on the ground floor
- Private residents-only interior courtyard with cultivated landscaping and foliage by Eta Landscape Architecture
- Triple-pane\* aluminum windows on all Marine Drive facing homes

## ELEGANT INTERIORS

- Considerate and seamlessly designed homes by highly-respected local interior designer Cristina Oberti
- Thoughtfully included Italian custom millwork details by Arclinea:
  - Media display area
  - Built-in bar area with integrated 24" full-height Sub-Zero wine refrigerator\*
  - Solid imported Italian closet shelving and storage organizers
- Selection of two colour palettes curated by Cristina Oberti Interior Design:
  - Light
  - Dark
- Superior engineered hardwood flooring throughout
- Ceiling mount fan coil units provide heat and air conditioning for a comfortable interior environment year-round

## CHEF KITCHENS

- Imported flat-panel Italian cabinetry with soft-close drawers from Arclinea
- Solid polished quartz stone countertops
- Full-height marble backsplashes
- Professional-grade appliance package featuring seamless millwork integration:
  - 30" Sub-Zero refrigerator with double freezer drawers and ice maker
  - 30" Wolf stainless steel 4-burner gas cooktop
  - 30" Wolf black and stainless steel wall hood fan
  - 30" Wolf stainless steel wall oven
  - 30" Wolf stainless steel steam oven
  - 24" Asko high-efficiency dishwasher
- Polished chrome Kallista single-lever faucet with pullout hand spray
- Modern under-mount, single-bowl stainless steel Kohler sink
- Equipped pantries with full-extension pull out drawers\*
- Pullout waste and recycling bins

## OPULENT BATHROOMS

- Vanities made in Italy entirely clad in marble stone from SCIC
- Mirrored Italian import medicine cabinets with integrated LED lighting
- Solid polished marble countertops
- Sleek polished chrome Kohler faucets
- Contemporary Kohler under-mount rectangular vanity basin
- Invigorating polished chrome Kohler rain shower head with hand shower
- Italian marble mosaic tiled shower base in master ensuite
- Frameless glass shower enclosure in master ensuite
- Wall-mount Kohler flush toilet with soft close seat

- Soaker tub with Italian marble base surround
- Floor-to-ceiling Italian porcelain tiled walls
- Nuheat™ in-floor heating in all bathrooms

## UTILITIES

- 24" Asko side-by-side high-efficiency vented washer and dryer
- Laundry closets with custom counter and millwork shelving
- Porcelain tiled flooring in laundry closets
- Ultra-quiet automated roller window blinds
- Pre-wiring to allow for future technology additions including surveillance and alarm

## AMENITIES

- Welcoming residential lobby impeccably designed by Cristina Oberti Interior Design
- Secure FOB and key access to underground parking, storage and bicycle storage
- Elegantly appointed residential elevators with restricted floor access
- Video surveillance at all building entry points
- Underground car washing station
- Underground pet washing station
- Underground bicycle maintenance bench by bicycle storage

## WARRANTY

- 2-5-10 Home Warranty

## THE RESIDENCES ON MARINE

### RESIDENCE 105

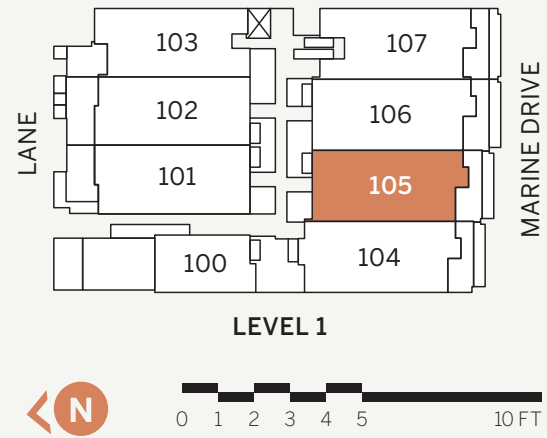
# RESIDENCE 105

## 3 Bedroom + 2 Bath

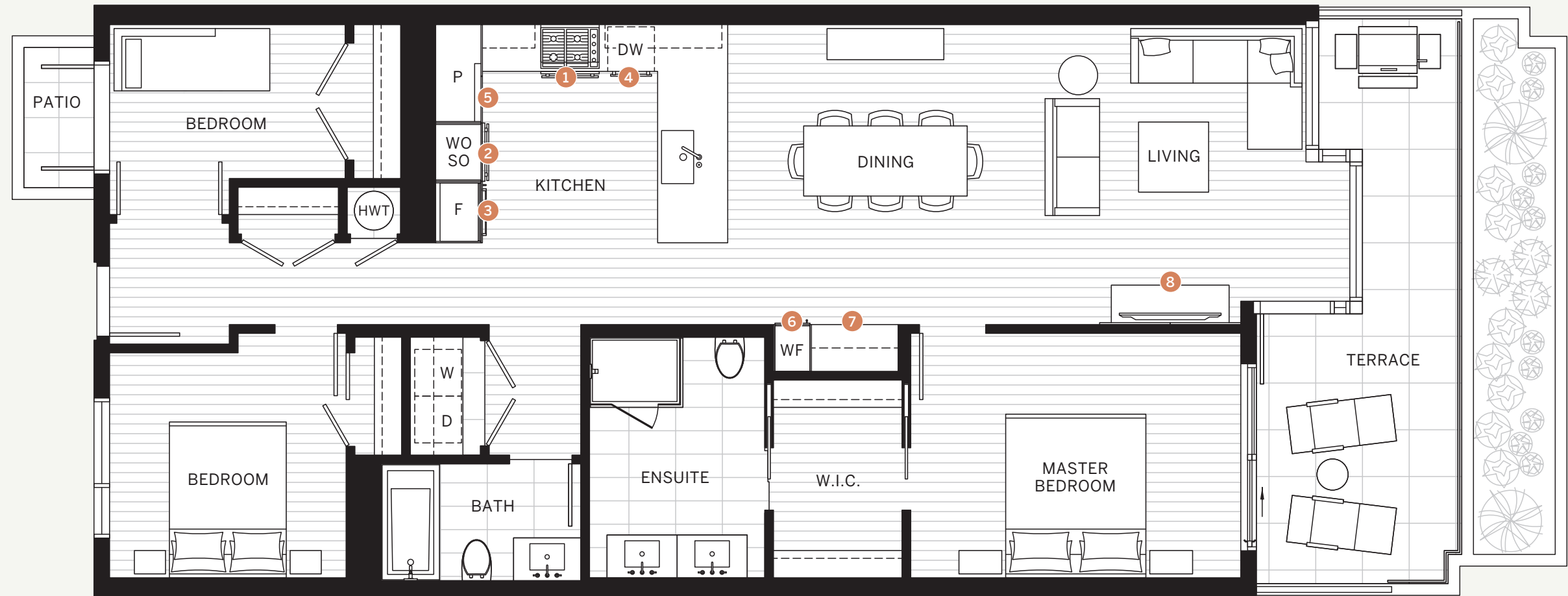
Indoor: 1254 sq.ft.

Outdoor: 165 sq.ft.

View: South



- ① 30" Wolf stainless steel 4-burner gas cooktop with 30" Wolf black and stainless steel hood fan
- ② 30" Wolf stainless steel wall oven and steam oven
- ③ 30" Sub-Zero integrated refrigerator with double freezer drawers and ice maker
- ④ 24" Asko integrated dishwasher
- ⑤ Italian-made pantries with full-extension pull out drawers by Arclinea
- ⑥ 30" Sub-Zero integrated full-height wine refrigerator
- ⑦ Built-in bar area featuring Italian millwork by Arclinea
- ⑧ Media display area in living room with Italian cabinetry from Arclinea



The Developer reserves the right to make modifications and changes to the information contained herein. Dimensions, sizes, specifications, layouts and materials are approximate only and subject to change without notice. E.&O.E.

**THE RESIDENCES**  
ON MARINE

# FEATURES AND SPECIFICATIONS

## IMPECCABLE ARCHITECTURE

- Architectural design by Karl Gustavson that pays homage to the community by incorporating elements of glass, steel, stone and wood-inspired metal panelling
- Built to LEED Silver equivalent boasting energy-efficiency, health indoor air quality, and sustainable materials and finishes
- A limited collection of only 16 stately-designed concrete homes nestled in the heart of Ambleside
- Three-storey concrete construction featuring four spacious retail spaces on the ground floor
- Private residents-only interior courtyard with cultivated landscaping and foliage by Eta Landscape Architecture
- Triple-pane\* aluminum windows on all Marine Drive facing homes

## ELEGANT INTERIORS

- Considerate and seamlessly designed homes by highly-respected local interior designer Cristina Oberti
- Thoughtfully included Italian custom millwork details by Arclinea:
  - Media display area
  - Built-in bar area with integrated 24" full-height Sub-Zero wine refrigerator\*
  - Solid imported Italian closet shelving and storage organizers
- Selection of two colour palettes curated by Cristina Oberti Interior Design:
  - Light
  - Dark
- Superior engineered hardwood flooring throughout
- Ceiling mount fan coil units provide heat and air conditioning for a comfortable interior environment year-round

## CHEF KITCHENS

- Imported flat-panel Italian cabinetry with soft-close drawers from Arclinea
- Solid polished quartz stone countertops
- Full-height marble backsplashes
- Professional-grade appliance package featuring seamless millwork integration:
  - 30" Sub-Zero refrigerator with double freezer drawers and ice maker
  - 30" Wolf stainless steel 4-burner gas cooktop
  - 30" Wolf black and stainless steel wall hood fan
  - 30" Wolf stainless steel wall oven
  - 30" Wolf stainless steel steam oven
  - 24" Asko high-efficiency dishwasher
- Polished chrome Kallista single-lever faucet with pullout hand spray
- Modern under-mount, single-bowl stainless steel Kohler sink
- Equipped pantries with full-extension pull out drawers\*
- Pullout waste and recycling bins

## OPULENT BATHROOMS

- Vanities made in Italy entirely clad in marble stone from SCIC
- Mirrored Italian import medicine cabinets with integrated LED lighting
- Solid polished marble countertops
- Sleek polished chrome Kohler faucets
- Contemporary Kohler under-mount rectangular vanity basin
- Invigorating polished chrome Kohler rain shower head with hand shower
- Italian marble mosaic tiled shower base in master ensuite
- Frameless glass shower enclosure in master ensuite
- Wall-mount Kohler flush toilet with soft close seat

- Soaker tub with Italian marble base surround
- Floor-to-ceiling Italian porcelain tiled walls
- Nuheat™ in-floor heating in all bathrooms

## UTILITIES

- 24" Asko side-by-side high-efficiency vented washer and dryer
- Laundry closets with custom counter and millwork shelving
- Porcelain tiled flooring in laundry closets
- Ultra-quiet automated roller window blinds
- Pre-wiring to allow for future technology additions including surveillance and alarm

## AMENITIES

- Welcoming residential lobby impeccably designed by Cristina Oberti Interior Design
- Secure FOB and key access to underground parking, storage and bicycle storage
- Elegantly appointed residential elevators with restricted floor access
- Video surveillance at all building entry points
- Underground car washing station
- Underground pet washing station
- Underground bicycle maintenance bench by bicycle storage

## WARRANTY

- 2-5-10 Home Warranty

## THE RESIDENCES ON MARINE

### RESIDENCE 106

\*Select Homes. The Developer reserves the right to make modifications and changes to the information contained herein. Dimensions, sizes, specifications, layouts and materials are approximate only and subject to change without notice. E.&O.E.

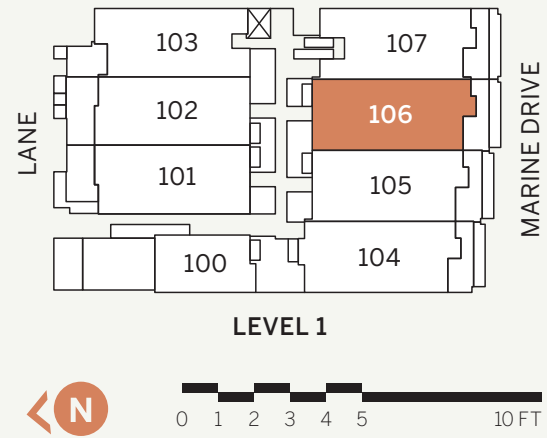
# RESIDENCE 106

## 3 Bedroom + 2 Bath

Indoor: 1321 sq.ft.

Outdoor: 160 sq.ft.

View: South



- ① 30" Wolf stainless steel 4-burner gas cooktop with 30" Wolf black and stainless steel hood fan
- ② 30" Wolf stainless steel wall oven and steam oven
- ③ 30" Sub-Zero integrated refrigerator with double freezer drawers and ice maker
- ④ 24" Asko integrated dishwasher
- ⑤ Italian-made pantries with full-extension pull out drawers by Arclinea
- ⑥ 30" Sub-Zero integrated full-height wine refrigerator
- ⑦ Built-in bar area featuring Italian millwork by Arclinea
- ⑧ Media display area in living room with Italian cabinetry from Arclinea



The Developer reserves the right to make modifications and changes to the information contained herein. Dimensions, sizes, specifications, layouts and materials are approximate only and subject to change without notice. E.&O.E.

**THE RESIDENCES**  
ON MARINE



# FEATURES AND SPECIFICATIONS

## IMPECCABLE ARCHITECTURE

- Architectural design by Karl Gustavson that pays homage to the community by incorporating elements of glass, steel, stone and wood-inspired metal panelling
- Built to LEED Silver equivalent boasting energy-efficiency, health indoor air quality, and sustainable materials and finishes
- A limited collection of only 16 stately-designed concrete homes nestled in the heart of Ambleside
- Three-storey concrete construction featuring four spacious retail spaces on the ground floor
- Private residents-only interior courtyard with cultivated landscaping and foliage by Eta Landscape Architecture
- Triple-pane\* aluminum windows on all Marine Drive facing homes

## ELEGANT INTERIORS

- Considerate and seamlessly designed homes by highly-respected local interior designer Cristina Oberti
- Thoughtfully included Italian custom millwork details by Arclinea:
  - Media display area
  - Built-in bar area with integrated 24" full-height Sub-Zero wine refrigerator\*
  - Solid imported Italian closet shelving and storage organizers
- Selection of two colour palettes curated by Cristina Oberti Interior Design:
  - Light
  - Dark
- Superior engineered hardwood flooring throughout
- Ceiling mount fan coil units provide heat and air conditioning for a comfortable interior environment year-round

## CHEF KITCHENS

- Imported flat-panel Italian cabinetry with soft-close drawers from Arclinea
- Solid polished quartz stone countertops
- Full-height marble backsplashes
- Professional-grade appliance package featuring seamless millwork integration:
  - 30" Sub-Zero refrigerator with double freezer drawers and ice maker
  - 30" Wolf stainless steel 4-burner gas cooktop
  - 30" Wolf black and stainless steel wall hood fan
  - 30" Wolf stainless steel wall oven
  - 30" Wolf stainless steel steam oven
  - 24" Asko high-efficiency dishwasher
- Polished chrome Kallista single-lever faucet with pullout hand spray
- Modern under-mount, single-bowl stainless steel Kohler sink
- Equipped pantries with full-extension pull out drawers\*
- Pullout waste and recycling bins

## OPULENT BATHROOMS

- Vanities made in Italy entirely clad in marble stone from SCIC
- Mirrored Italian import medicine cabinets with integrated LED lighting
- Solid polished marble countertops
- Sleek polished chrome Kohler faucets
- Contemporary Kohler under-mount rectangular vanity basin
- Invigorating polished chrome Kohler rain shower head with hand shower
- Italian marble mosaic tiled shower base in master ensuite
- Frameless glass shower enclosure in master ensuite
- Wall-mount Kohler flush toilet with soft close seat

- Soaker tub with Italian marble base surround
- Floor-to-ceiling Italian porcelain tiled walls
- Nuheat™ in-floor heating in all bathrooms

## UTILITIES

- 24" Asko side-by-side high-efficiency vented washer and dryer
- Laundry closets with custom counter and millwork shelving
- Porcelain tiled flooring in laundry closets
- Ultra-quiet automated roller window blinds
- Pre-wiring to allow for future technology additions including surveillance and alarm

## AMENITIES

- Welcoming residential lobby impeccably designed by Cristina Oberti Interior Design
- Secure FOB and key access to underground parking, storage and bicycle storage
- Elegantly appointed residential elevators with restricted floor access
- Video surveillance at all building entry points
- Underground car washing station
- Underground pet washing station
- Underground bicycle maintenance bench by bicycle storage

## WARRANTY

- 2-5-10 Home Warranty

## THE RESIDENCES ON MARINE

### RESIDENCE 107

\*Select Homes. The Developer reserves the right to make modifications and changes to the information contained herein. Dimensions, sizes, specifications, layouts and materials are approximate only and subject to change without notice. E.&O.E.

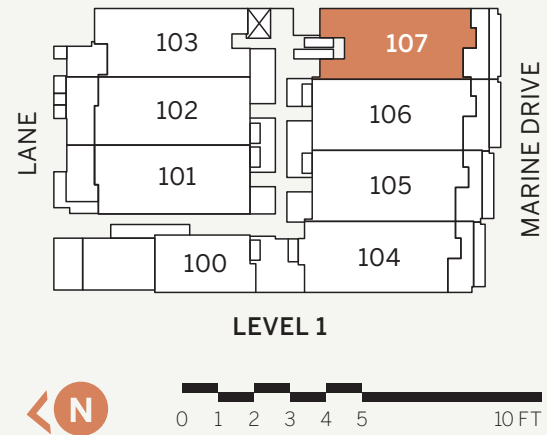
# RESIDENCE 107

## 2 Bedroom + 2 Bath

Indoor: 1163 sq.ft.

Outdoor: 154 sq.ft.

View: South



- ① 30" Wolf stainless steel 4-burner gas cooktop with 30" Wolf black and stainless steel hood fan
- ② 30" Wolf stainless steel wall oven and steam oven
- ③ 30" Sub-Zero integrated refrigerator with double freezer drawers and ice maker
- ④ 24" Asko integrated dishwasher
- ⑤ Italian-made pantries with full-extension pull out drawers by Arclinea
- ⑥ 30" Sub-Zero integrated full-height wine refrigerator
- ⑦ Built-in bar area featuring Italian millwork by Arclinea
- ⑧ Media display area in living room with Italian cabinetry from Arclinea



The Developer reserves the right to make modifications and changes to the information contained herein. Dimensions, sizes, specifications, layouts and materials are approximate only and subject to change without notice. E.&O.E.

**THE RESIDENCES  
ON MARINE**

# FEATURES AND SPECIFICATIONS

## IMPECCABLE ARCHITECTURE

- Architectural design by Karl Gustavson that pays homage to the community by incorporating elements of glass, steel, stone and wood-inspired metal panelling
- Built to LEED Silver equivalent boasting energy-efficiency, health indoor air quality, and sustainable materials and finishes
- A limited collection of only 16 stately-designed concrete homes nestled in the heart of Ambleside
- Three-storey concrete construction featuring four spacious retail spaces on the ground floor
- Private residents-only interior courtyard with cultivated landscaping and foliage by Eta Landscape Architecture
- Triple-pane\* aluminum windows on all Marine Drive facing homes

## ELEGANT INTERIORS

- Considerate and seamlessly designed homes by highly-respected local interior designer Cristina Oberti
- Thoughtfully included Italian custom millwork details by Arclinea:
  - Media display area
  - Built-in bar area with integrated 24" full-height Sub-Zero wine refrigerator\*
  - Solid imported Italian closet shelving and storage organizers
- Selection of two colour palettes curated by Cristina Oberti Interior Design:
  - Light
  - Dark
- Superior engineered hardwood flooring throughout
- Ceiling mount fan coil units provide heat and air conditioning for a comfortable interior environment year-round

## CHEF KITCHENS

- Imported flat-panel Italian cabinetry with soft-close drawers from Arclinea
- Solid polished quartz stone countertops
- Full-height marble backsplashes
- Professional-grade appliance package featuring seamless millwork integration:
  - 30" Sub-Zero refrigerator with double freezer drawers and ice maker
  - 30" Wolf stainless steel 4-burner gas cooktop
  - 30" Wolf black and stainless steel wall hood fan
  - 30" Wolf stainless steel wall oven
  - 30" Wolf stainless steel steam oven
  - 24" Asko high-efficiency dishwasher
- Polished chrome Kallista single-lever faucet with pullout hand spray
- Modern under-mount, single-bowl stainless steel Kohler sink
- Equipped pantries with full-extension pull out drawers\*
- Pullout waste and recycling bins

## OPULENT BATHROOMS

- Vanities made in Italy entirely clad in marble stone from SCIC
- Mirrored Italian import medicine cabinets with integrated LED lighting
- Solid polished marble countertops
- Sleek polished chrome Kohler faucets
- Contemporary Kohler under-mount rectangular vanity basin
- Invigorating polished chrome Kohler rain shower head with hand shower
- Italian marble mosaic tiled shower base in master ensuite
- Frameless glass shower enclosure in master ensuite
- Wall-mount Kohler flush toilet with soft close seat

- Soaker tub with Italian marble base surround
- Floor-to-ceiling Italian porcelain tiled walls
- Nuheat™ in-floor heating in all bathrooms

## UTILITIES

- 24" Asko side-by-side high-efficiency vented washer and dryer
- Laundry closets with custom counter and millwork shelving
- Porcelain tiled flooring in laundry closets
- Ultra-quiet automated roller window blinds
- Pre-wiring to allow for future technology additions including surveillance and alarm

## AMENITIES

- Welcoming residential lobby impeccably designed by Cristina Oberti Interior Design
- Secure FOB and key access to underground parking, storage and bicycle storage
- Elegantly appointed residential elevators with restricted floor access
- Video surveillance at all building entry points
- Underground car washing station
- Underground pet washing station
- Underground bicycle maintenance bench by bicycle storage

## WARRANTY

- 2-5-10 Home Warranty

## THE RESIDENCES ON MARINE

### RESIDENCE 200

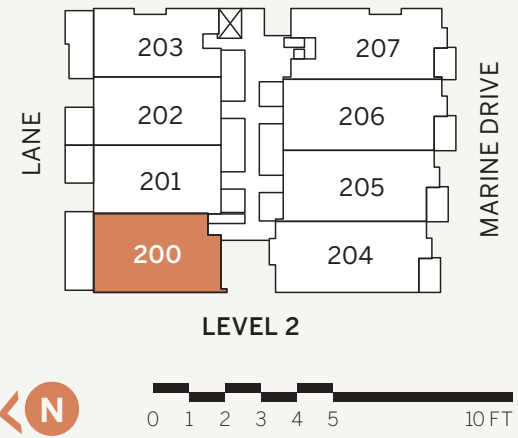
# RESIDENCE 200

## 2 Bedroom + 2 Bath + Flex

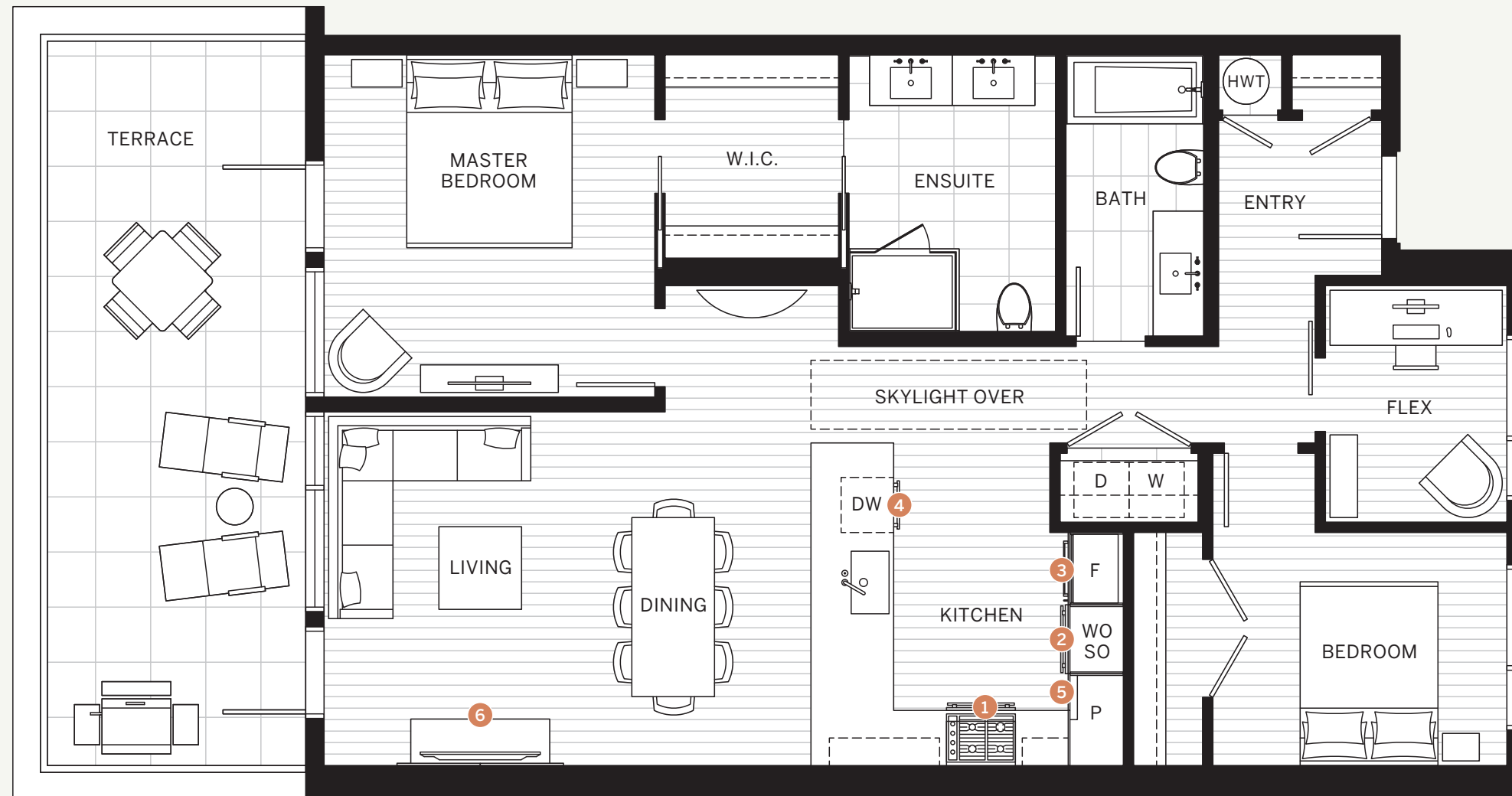
Indoor: 1136 sq.ft.

Outdoor: 261 sq.ft.

View: North



- ① 30" Wolf stainless steel 4-burner gas cooktop with 30" Wolf black and stainless steel hood fan
- ② 30" Wolf stainless steel wall oven and steam oven
- ③ 30" Sub-Zero integrated refrigerator with double freezer drawers and ice maker
- ④ 24" Asko integrated dishwasher
- ⑤ Italian-made pantries with full-extension pull out drawers by Arclinea
- ⑥ Media display area in living room with Italian cabinetry from Arclinea



The Developer reserves the right to make modifications and changes to the information contained herein. Dimensions, sizes, specifications, layouts and materials are approximate only and subject to change without notice. E.&O.E.

THE RESIDENCES  
ON MARINE

# FEATURES AND SPECIFICATIONS

## IMPECCABLE ARCHITECTURE

- Architectural design by Karl Gustavson that pays homage to the community by incorporating elements of glass, steel, stone and wood-inspired metal panelling
- Built to LEED Silver equivalent boasting energy-efficiency, health indoor air quality, and sustainable materials and finishes
- A limited collection of only 16 stately-designed concrete homes nestled in the heart of Ambleside
- Three-storey concrete construction featuring four spacious retail spaces on the ground floor
- Private residents-only interior courtyard with cultivated landscaping and foliage by Eta Landscape Architecture
- Triple-pane\* aluminum windows on all Marine Drive facing homes

## ELEGANT INTERIORS

- Considerate and seamlessly designed homes by highly-respected local interior designer Cristina Oberti
- Thoughtfully included Italian custom millwork details by Arclinea:
  - Media display area
  - Built-in bar area with integrated 24" full-height Sub-Zero wine refrigerator\*
  - Solid imported Italian closet shelving and storage organizers
- Selection of two colour palettes curated by Cristina Oberti Interior Design:
  - Light
  - Dark
- Superior engineered hardwood flooring throughout
- Ceiling mount fan coil units provide heat and air conditioning for a comfortable interior environment year-round

## CHEF KITCHENS

- Imported flat-panel Italian cabinetry with soft-close drawers from Arclinea
- Solid polished quartz stone countertops
- Full-height marble backsplashes
- Professional-grade appliance package featuring seamless millwork integration:
  - 30" Sub-Zero refrigerator with double freezer drawers and ice maker
  - 30" Wolf stainless steel 4-burner gas cooktop
  - 30" Wolf black and stainless steel wall hood fan
  - 30" Wolf stainless steel wall oven
  - 30" Wolf stainless steel steam oven
  - 24" Asko high-efficiency dishwasher
- Polished chrome Kallista single-lever faucet with pullout hand spray
- Modern under-mount, single-bowl stainless steel Kohler sink
- Equipped pantries with full-extension pull out drawers\*
- Pullout waste and recycling bins

## OPULENT BATHROOMS

- Vanities made in Italy entirely clad in marble stone from SCIC
- Mirrored Italian import medicine cabinets with integrated LED lighting
- Solid polished marble countertops
- Sleek polished chrome Kohler faucets
- Contemporary Kohler under-mount rectangular vanity basin
- Invigorating polished chrome Kohler rain shower head with hand shower
- Italian marble mosaic tiled shower base in master ensuite
- Frameless glass shower enclosure in master ensuite
- Wall-mount Kohler flush toilet with soft close seat

- Soaker tub with Italian marble base surround
- Floor-to-ceiling Italian porcelain tiled walls
- Nuheat™ in-floor heating in all bathrooms

## UTILITIES

- 24" Asko side-by-side high-efficiency vented washer and dryer
- Laundry closets with custom counter and millwork shelving
- Porcelain tiled flooring in laundry closets
- Ultra-quiet automated roller window blinds
- Pre-wiring to allow for future technology additions including surveillance and alarm

## AMENITIES

- Welcoming residential lobby impeccably designed by Cristina Oberti Interior Design
- Secure FOB and key access to underground parking, storage and bicycle storage
- Elegantly appointed residential elevators with restricted floor access
- Video surveillance at all building entry points
- Underground car washing station
- Underground pet washing station
- Underground bicycle maintenance bench by bicycle storage

## WARRANTY

- 2-5-10 Home Warranty

## THE RESIDENCES ON MARINE

### RESIDENCE 201

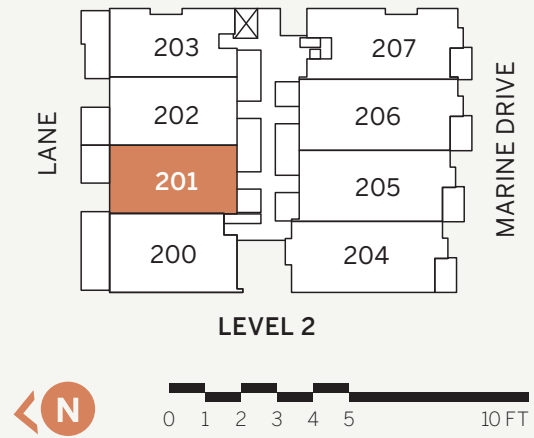
# RESIDENCE 201

## 2 Bedroom + 2 Bath + Flex

Indoor: 1028 sq.ft.

Outdoor: 124 sq.ft.

View: North



- ① 30" Wolf stainless steel 4-burner gas cooktop with 30" Wolf black and stainless steel hood fan
- ② 30" Wolf stainless steel wall oven and steam oven
- ③ 30" Sub-Zero integrated refrigerator with double freezer drawers and ice maker
- ④ 24" Asko integrated dishwasher
- ⑤ Italian-made pantries with full-extension pull out drawers by Arclinea
- ⑥ 30" Sub-Zero integrated full-height wine refrigerator
- ⑦ Built-in bar area featuring Italian millwork by Arclinea
- ⑧ Media display area in living room with Italian cabinetry from Arclinea



The Developer reserves the right to make modifications and changes to the information contained herein. Dimensions, sizes, specifications, layouts and materials are approximate only and subject to change without notice. E.&O.E.

**THE RESIDENCES**  
ON MARINE



# FEATURES AND SPECIFICATIONS

## IMPECCABLE ARCHITECTURE

- Architectural design by Karl Gustavson that pays homage to the community by incorporating elements of glass, steel, stone and wood-inspired metal panelling
- Built to LEED Silver equivalent boasting energy-efficiency, health indoor air quality, and sustainable materials and finishes
- A limited collection of only 16 stately-designed concrete homes nestled in the heart of Ambleside
- Three-storey concrete construction featuring four spacious retail spaces on the ground floor
- Private residents-only interior courtyard with cultivated landscaping and foliage by Eta Landscape Architecture
- Triple-pane\* aluminum windows on all Marine Drive facing homes

## ELEGANT INTERIORS

- Considerate and seamlessly designed homes by highly-respected local interior designer Cristina Oberti
- Thoughtfully included Italian custom millwork details by Arclinea:
  - Media display area
  - Built-in bar area with integrated 24" full-height Sub-Zero wine refrigerator\*
  - Solid imported Italian closet shelving and storage organizers
- Selection of two colour palettes curated by Cristina Oberti Interior Design:
  - Light
  - Dark
- Superior engineered hardwood flooring throughout
- Ceiling mount fan coil units provide heat and air conditioning for a comfortable interior environment year-round

## CHEF KITCHENS

- Imported flat-panel Italian cabinetry with soft-close drawers from Arclinea
- Solid polished quartz stone countertops
- Full-height marble backsplashes
- Professional-grade appliance package featuring seamless millwork integration:
  - 30" Sub-Zero refrigerator with double freezer drawers and ice maker
  - 30" Wolf stainless steel 4-burner gas cooktop
  - 30" Wolf black and stainless steel wall hood fan
  - 30" Wolf stainless steel wall oven
  - 30" Wolf stainless steel steam oven
  - 24" Asko high-efficiency dishwasher
- Polished chrome Kallista single-lever faucet with pullout hand spray
- Modern under-mount, single-bowl stainless steel Kohler sink
- Equipped pantries with full-extension pull out drawers\*
- Pullout waste and recycling bins

## OPULENT BATHROOMS

- Vanities made in Italy entirely clad in marble stone from SCIC
- Mirrored Italian import medicine cabinets with integrated LED lighting
- Solid polished marble countertops
- Sleek polished chrome Kohler faucets
- Contemporary Kohler under-mount rectangular vanity basin
- Invigorating polished chrome Kohler rain shower head with hand shower
- Italian marble mosaic tiled shower base in master ensuite
- Frameless glass shower enclosure in master ensuite
- Wall-mount Kohler flush toilet with soft close seat

- Soaker tub with Italian marble base surround
- Floor-to-ceiling Italian porcelain tiled walls
- Nuheat™ in-floor heating in all bathrooms

## UTILITIES

- 24" Asko side-by-side high-efficiency vented washer and dryer
- Laundry closets with custom counter and millwork shelving
- Porcelain tiled flooring in laundry closets
- Ultra-quiet automated roller window blinds
- Pre-wiring to allow for future technology additions including surveillance and alarm

## AMENITIES

- Welcoming residential lobby impeccably designed by Cristina Oberti Interior Design
- Secure FOB and key access to underground parking, storage and bicycle storage
- Elegantly appointed residential elevators with restricted floor access
- Video surveillance at all building entry points
- Underground car washing station
- Underground pet washing station
- Underground bicycle maintenance bench by bicycle storage

## WARRANTY

- 2-5-10 Home Warranty

## THE RESIDENCES ON MARINE

### RESIDENCE 202

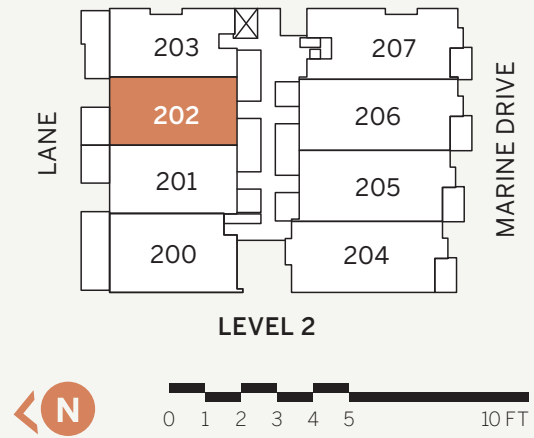
# RESIDENCE 202

## 2 Bedroom + 2 Bath + Flex

Indoor: 1030 sq.ft.

Outdoor: 124 sq.ft.

View: North



- ① 30" Wolf stainless steel 4-burner gas cooktop with 30" Wolf black and stainless steel hood fan
- ② 30" Wolf stainless steel wall oven and steam oven
- ③ 30" Sub-Zero integrated refrigerator with double freezer drawers and ice maker
- ④ 24" Asko integrated dishwasher
- ⑤ Italian-made pantries with full-extension pull out drawers by Arclinea
- ⑥ 30" Sub-Zero integrated full-height wine refrigerator
- ⑦ Built-in bar area featuring Italian millwork by Arclinea
- ⑧ Media display area in living room with Italian cabinetry from Arclinea



The Developer reserves the right to make modifications and changes to the information contained herein. Dimensions, sizes, specifications, layouts and materials are approximate only and subject to change without notice. E.&O.E.

**THE RESIDENCES**  
ON MARINE

# FEATURES AND SPECIFICATIONS

## IMPECCABLE ARCHITECTURE

- Architectural design by Karl Gustavson that pays homage to the community by incorporating elements of glass, steel, stone and wood-inspired metal panelling
- Built to LEED Silver equivalent boasting energy-efficiency, health indoor air quality, and sustainable materials and finishes
- A limited collection of only 16 stately-designed concrete homes nestled in the heart of Ambleside
- Three-storey concrete construction featuring four spacious retail spaces on the ground floor
- Private residents-only interior courtyard with cultivated landscaping and foliage by Eta Landscape Architecture
- Triple-pane\* aluminum windows on all Marine Drive facing homes

## ELEGANT INTERIORS

- Considerate and seamlessly designed homes by highly-respected local interior designer Cristina Oberti
- Thoughtfully included Italian custom millwork details by Arclinea:
  - Media display area
  - Built-in bar area with integrated 24" full-height Sub-Zero wine refrigerator\*
  - Solid imported Italian closet shelving and storage organizers
- Selection of two colour palettes curated by Cristina Oberti Interior Design:
  - Light
  - Dark
- Superior engineered hardwood flooring throughout
- Ceiling mount fan coil units provide heat and air conditioning for a comfortable interior environment year-round

## CHEF KITCHENS

- Imported flat-panel Italian cabinetry with soft-close drawers from Arclinea
- Solid polished quartz stone countertops
- Full-height marble backsplashes
- Professional-grade appliance package featuring seamless millwork integration:
  - 30" Sub-Zero refrigerator with double freezer drawers and ice maker
  - 30" Wolf stainless steel 4-burner gas cooktop
  - 30" Wolf black and stainless steel wall hood fan
  - 30" Wolf stainless steel wall oven
  - 30" Wolf stainless steel steam oven
  - 24" Asko high-efficiency dishwasher
- Polished chrome Kallista single-lever faucet with pullout hand spray
- Modern under-mount, single-bowl stainless steel Kohler sink
- Equipped pantries with full-extension pull out drawers\*
- Pullout waste and recycling bins

## OPULENT BATHROOMS

- Vanities made in Italy entirely clad in marble stone from SCIC
- Mirrored Italian import medicine cabinets with integrated LED lighting
- Solid polished marble countertops
- Sleek polished chrome Kohler faucets
- Contemporary Kohler under-mount rectangular vanity basin
- Invigorating polished chrome Kohler rain shower head with hand shower
- Italian marble mosaic tiled shower base in master ensuite
- Frameless glass shower enclosure in master ensuite
- Wall-mount Kohler flush toilet with soft close seat

- Soaker tub with Italian marble base surround
- Floor-to-ceiling Italian porcelain tiled walls
- Nuheat™ in-floor heating in all bathrooms

## UTILITIES

- 24" Asko side-by-side high-efficiency vented washer and dryer
- Laundry closets with custom counter and millwork shelving
- Porcelain tiled flooring in laundry closets
- Ultra-quiet automated roller window blinds
- Pre-wiring to allow for future technology additions including surveillance and alarm

## AMENITIES

- Welcoming residential lobby impeccably designed by Cristina Oberti Interior Design
- Secure FOB and key access to underground parking, storage and bicycle storage
- Elegantly appointed residential elevators with restricted floor access
- Video surveillance at all building entry points
- Underground car washing station
- Underground pet washing station
- Underground bicycle maintenance bench by bicycle storage

## WARRANTY

- 2-5-10 Home Warranty

## THE RESIDENCES ON MARINE

### RESIDENCE 203

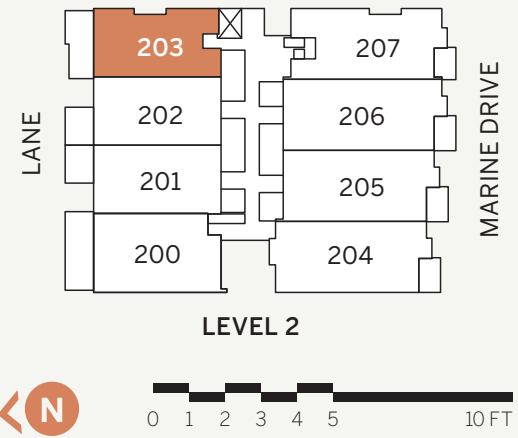
# RESIDENCE 203

## 2 Bedroom + 2 Bath

Indoor: 950 sq.ft.

Outdoor: 209 sq.ft.

View: North



- ① 30" Wolf stainless steel 4-burner gas cooktop with 30" Wolf black and stainless steel hood fan
- ② 30" Wolf stainless steel wall oven and steam oven
- ③ 30" Sub-Zero integrated refrigerator with double freezer drawers and ice maker
- ④ 24" Asko integrated dishwasher
- ⑤ Italian-made pantries with full-extension pull out drawers by Arclinea
- ⑥ Media display area in living room with Italian cabinetry from Arclinea



The Developer reserves the right to make modifications and changes to the information contained herein. Dimensions, sizes, specifications, layouts and materials are approximate only and subject to change without notice. E.&O.E.

**THE RESIDENCES**  
ON MARINE

# FEATURES AND SPECIFICATIONS

## IMPECCABLE ARCHITECTURE

- Architectural design by Karl Gustavson that pays homage to the community by incorporating elements of glass, steel, stone and wood-inspired metal panelling
- Built to LEED Silver equivalent boasting energy-efficiency, health indoor air quality, and sustainable materials and finishes
- A limited collection of only 16 stately-designed concrete homes nestled in the heart of Ambleside
- Three-storey concrete construction featuring four spacious retail spaces on the ground floor
- Private residents-only interior courtyard with cultivated landscaping and foliage by Eta Landscape Architecture
- Triple-pane\* aluminum windows on all Marine Drive facing homes

## ELEGANT INTERIORS

- Considerate and seamlessly designed homes by highly-respected local interior designer Cristina Oberti
- Thoughtfully included Italian custom millwork details by Arclinea:
  - Media display area
  - Built-in bar area with integrated 24" full-height Sub-Zero wine refrigerator\*
  - Solid imported Italian closet shelving and storage organizers
- Selection of two colour palettes curated by Cristina Oberti Interior Design:
  - Light
  - Dark
- Superior engineered hardwood flooring throughout
- Ceiling mount fan coil units provide heat and air conditioning for a comfortable interior environment year-round

## CHEF KITCHENS

- Imported flat-panel Italian cabinetry with soft-close drawers from Arclinea
- Solid polished quartz stone countertops
- Full-height marble backsplashes
- Professional-grade appliance package featuring seamless millwork integration:
  - 30" Sub-Zero refrigerator with double freezer drawers and ice maker
  - 30" Wolf stainless steel 4-burner gas cooktop
  - 30" Wolf black and stainless steel wall hood fan
  - 30" Wolf stainless steel wall oven
  - 30" Wolf stainless steel steam oven
  - 24" Asko high-efficiency dishwasher
- Polished chrome Kallista single-lever faucet with pullout hand spray
- Modern under-mount, single-bowl stainless steel Kohler sink
- Equipped pantries with full-extension pull out drawers\*
- Pullout waste and recycling bins

## OPULENT BATHROOMS

- Vanities made in Italy entirely clad in marble stone from SCIC
- Mirrored Italian import medicine cabinets with integrated LED lighting
- Solid polished marble countertops
- Sleek polished chrome Kohler faucets
- Contemporary Kohler under-mount rectangular vanity basin
- Invigorating polished chrome Kohler rain shower head with hand shower
- Italian marble mosaic tiled shower base in master ensuite
- Frameless glass shower enclosure in master ensuite
- Wall-mount Kohler flush toilet with soft close seat

- Soaker tub with Italian marble base surround
- Floor-to-ceiling Italian porcelain tiled walls
- Nuheat™ in-floor heating in all bathrooms

## UTILITIES

- 24" Asko side-by-side high-efficiency vented washer and dryer
- Laundry closets with custom counter and millwork shelving
- Porcelain tiled flooring in laundry closets
- Ultra-quiet automated roller window blinds
- Pre-wiring to allow for future technology additions including surveillance and alarm

## AMENITIES

- Welcoming residential lobby impeccably designed by Cristina Oberti Interior Design
- Secure FOB and key access to underground parking, storage and bicycle storage
- Elegantly appointed residential elevators with restricted floor access
- Video surveillance at all building entry points
- Underground car washing station
- Underground pet washing station
- Underground bicycle maintenance bench by bicycle storage

## WARRANTY

- 2-5-10 Home Warranty

## THE RESIDENCES ON MARINE

### RESIDENCE 204

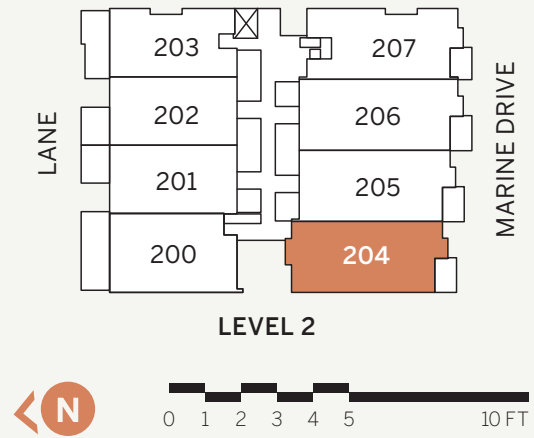
# RESIDENCE 204

## 2 Bedroom + 2 Bath + Flex

Indoor: 1252 sq.ft.

Outdoor: 87 sq.ft.

View: South



- ① 30" Wolf stainless steel 4-burner gas cooktop with 30" Wolf black and stainless steel hood fan
- ② 30" Wolf stainless steel wall oven and steam oven
- ③ 30" Sub-Zero integrated refrigerator with double freezer drawers and ice maker
- ④ 24" Asko integrated dishwasher
- ⑤ Italian-made pantries with full-extension pull out drawers by Arclinea
- ⑥ 30" Sub-Zero integrated full-height wine refrigerator
- ⑦ Built-in bar area featuring Italian millwork by Arclinea
- ⑧ Media display area in living room with Italian cabinetry from Arclinea



The Developer reserves the right to make modifications and changes to the information contained herein. Dimensions, sizes, specifications, layouts and materials are approximate only and subject to change without notice. E.&O.E.

**THE RESIDENCES**  
ON MARINE



# FEATURES AND SPECIFICATIONS

## IMPECCABLE ARCHITECTURE

- Architectural design by Karl Gustavson that pays homage to the community by incorporating elements of glass, steel, stone and wood-inspired metal panelling
- Built to LEED Silver equivalent boasting energy-efficiency, health indoor air quality, and sustainable materials and finishes
- A limited collection of only 16 stately-designed concrete homes nestled in the heart of Ambleside
- Three-storey concrete construction featuring four spacious retail spaces on the ground floor
- Private residents-only interior courtyard with cultivated landscaping and foliage by Eta Landscape Architecture
- Triple-pane\* aluminum windows on all Marine Drive facing homes

## ELEGANT INTERIORS

- Considerate and seamlessly designed homes by highly-respected local interior designer Cristina Oberti
- Thoughtfully included Italian custom millwork details by Arclinea:
  - Media display area
  - Built-in bar area with integrated 24" full-height Sub-Zero wine refrigerator\*
  - Solid imported Italian closet shelving and storage organizers
- Selection of two colour palettes curated by Cristina Oberti Interior Design:
  - Light
  - Dark
- Superior engineered hardwood flooring throughout
- Ceiling mount fan coil units provide heat and air conditioning for a comfortable interior environment year-round

## CHEF KITCHENS

- Imported flat-panel Italian cabinetry with soft-close drawers from Arclinea
- Solid polished quartz stone countertops
- Full-height marble backsplashes
- Professional-grade appliance package featuring seamless millwork integration:
  - 30" Sub-Zero refrigerator with double freezer drawers and ice maker
  - 30" Wolf stainless steel 4-burner gas cooktop
  - 30" Wolf black and stainless steel wall hood fan
  - 30" Wolf stainless steel wall oven
  - 30" Wolf stainless steel steam oven
  - 24" Asko high-efficiency dishwasher
- Polished chrome Kallista single-lever faucet with pullout hand spray
- Modern under-mount, single-bowl stainless steel Kohler sink
- Equipped pantries with full-extension pull out drawers\*
- Pullout waste and recycling bins

## OPULENT BATHROOMS

- Vanities made in Italy entirely clad in marble stone from SCIC
- Mirrored Italian import medicine cabinets with integrated LED lighting
- Solid polished marble countertops
- Sleek polished chrome Kohler faucets
- Contemporary Kohler under-mount rectangular vanity basin
- Invigorating polished chrome Kohler rain shower head with hand shower
- Italian marble mosaic tiled shower base in master ensuite
- Frameless glass shower enclosure in master ensuite
- Wall-mount Kohler flush toilet with soft close seat

- Soaker tub with Italian marble base surround
- Floor-to-ceiling Italian porcelain tiled walls
- Nuheat™ in-floor heating in all bathrooms

## UTILITIES

- 24" Asko side-by-side high-efficiency vented washer and dryer
- Laundry closets with custom counter and millwork shelving
- Porcelain tiled flooring in laundry closets
- Ultra-quiet automated roller window blinds
- Pre-wiring to allow for future technology additions including surveillance and alarm

## AMENITIES

- Welcoming residential lobby impeccably designed by Cristina Oberti Interior Design
- Secure FOB and key access to underground parking, storage and bicycle storage
- Elegantly appointed residential elevators with restricted floor access
- Video surveillance at all building entry points
- Underground car washing station
- Underground pet washing station
- Underground bicycle maintenance bench by bicycle storage

## WARRANTY

- 2-5-10 Home Warranty

## THE RESIDENCES ON MARINE

### RESIDENCE 205

\*Select Homes. The Developer reserves the right to make modifications and changes to the information contained herein. Dimensions, sizes, specifications, layouts and materials are approximate only and subject to change without notice. E.&O.E.

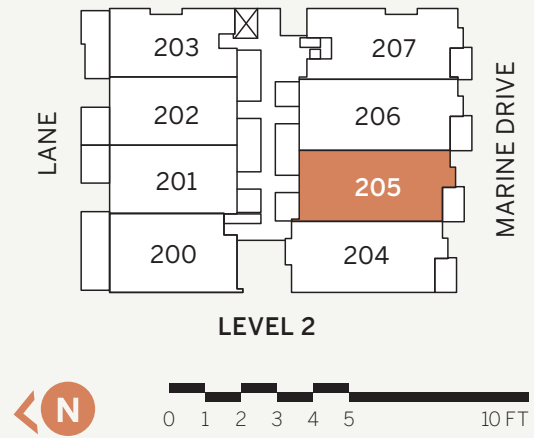
# RESIDENCE 205

## 3 Bedroom + 2 Bath

Indoor: 1254 sq.ft.

Outdoor: 96 sq.ft.

View: South



- ① 30" Wolf stainless steel 4-burner gas cooktop with 30" Wolf black and stainless steel hood fan
- ② 30" Wolf stainless steel wall oven and steam oven
- ③ 30" Sub-Zero integrated refrigerator with double freezer drawers and ice maker
- ④ 24" Asko integrated dishwasher
- ⑤ Italian-made pantries with full-extension pull out drawers by Arclinea
- ⑥ 30" Sub-Zero integrated full-height wine refrigerator
- ⑦ Built-in bar area featuring Italian millwork by Arclinea
- ⑧ Media display area in living room with Italian cabinetry from Arclinea



The Developer reserves the right to make modifications and changes to the information contained herein. Dimensions, sizes, specifications, layouts and materials are approximate only and subject to change without notice. E.&O.E.

**THE RESIDENCES**  
ON MARINE

# FEATURES AND SPECIFICATIONS

## IMPECCABLE ARCHITECTURE

- Architectural design by Karl Gustavson that pays homage to the community by incorporating elements of glass, steel, stone and wood-inspired metal panelling
- Built to LEED Silver equivalent boasting energy-efficiency, health indoor air quality, and sustainable materials and finishes
- A limited collection of only 16 stately-designed concrete homes nestled in the heart of Ambleside
- Three-storey concrete construction featuring four spacious retail spaces on the ground floor
- Private residents-only interior courtyard with cultivated landscaping and foliage by Eta Landscape Architecture
- Triple-pane\* aluminum windows on all Marine Drive facing homes

## ELEGANT INTERIORS

- Considerate and seamlessly designed homes by highly-respected local interior designer Cristina Oberti
- Thoughtfully included Italian custom millwork details by Arclinea:
  - Media display area
  - Built-in bar area with integrated 24" full-height Sub-Zero wine refrigerator\*
  - Solid imported Italian closet shelving and storage organizers
- Selection of two colour palettes curated by Cristina Oberti Interior Design:
  - Light
  - Dark
- Superior engineered hardwood flooring throughout
- Ceiling mount fan coil units provide heat and air conditioning for a comfortable interior environment year-round

## CHEF KITCHENS

- Imported flat-panel Italian cabinetry with soft-close drawers from Arclinea
- Solid polished quartz stone countertops
- Full-height marble backsplashes
- Professional-grade appliance package featuring seamless millwork integration:
  - 30" Sub-Zero refrigerator with double freezer drawers and ice maker
  - 30" Wolf stainless steel 4-burner gas cooktop
  - 30" Wolf black and stainless steel wall hood fan
  - 30" Wolf stainless steel wall oven
  - 30" Wolf stainless steel steam oven
  - 24" Asko high-efficiency dishwasher
- Polished chrome Kallista single-lever faucet with pullout hand spray
- Modern under-mount, single-bowl stainless steel Kohler sink
- Equipped pantries with full-extension pull out drawers\*
- Pullout waste and recycling bins

## OPULENT BATHROOMS

- Vanities made in Italy entirely clad in marble stone from SCIC
- Mirrored Italian import medicine cabinets with integrated LED lighting
- Solid polished marble countertops
- Sleek polished chrome Kohler faucets
- Contemporary Kohler under-mount rectangular vanity basin
- Invigorating polished chrome Kohler rain shower head with hand shower
- Italian marble mosaic tiled shower base in master ensuite
- Frameless glass shower enclosure in master ensuite
- Wall-mount Kohler flush toilet with soft close seat

- Soaker tub with Italian marble base surround
- Floor-to-ceiling Italian porcelain tiled walls
- Nuheat™ in-floor heating in all bathrooms

## UTILITIES

- 24" Asko side-by-side high-efficiency vented washer and dryer
- Laundry closets with custom counter and millwork shelving
- Porcelain tiled flooring in laundry closets
- Ultra-quiet automated roller window blinds
- Pre-wiring to allow for future technology additions including surveillance and alarm

## AMENITIES

- Welcoming residential lobby impeccably designed by Cristina Oberti Interior Design
- Secure FOB and key access to underground parking, storage and bicycle storage
- Elegantly appointed residential elevators with restricted floor access
- Video surveillance at all building entry points
- Underground car washing station
- Underground pet washing station
- Underground bicycle maintenance bench by bicycle storage

## WARRANTY

- 2-5-10 Home Warranty

## THE RESIDENCES ON MARINE

### RESIDENCE 206

\*Select Homes. The Developer reserves the right to make modifications and changes to the information contained herein. Dimensions, sizes, specifications, layouts and materials are approximate only and subject to change without notice. E.&O.E.

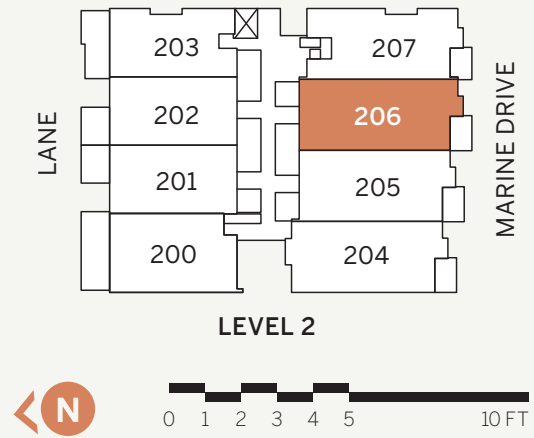
# RESIDENCE 206

## 3 Bedroom + 2 Bath

Indoor: 1321 sq.ft.

Outdoor: 96 sq.ft.

View: South



- ① 30" Wolf stainless steel 4-burner gas cooktop with 30" Wolf black and stainless steel hood fan
- ② 30" Wolf stainless steel wall oven and steam oven
- ③ 30" Sub-Zero integrated refrigerator with double freezer drawers and ice maker
- ④ 24" Asko integrated dishwasher
- ⑤ Italian-made pantries with full-extension pull out drawers by Arclinea
- ⑥ 30" Sub-Zero integrated full-height wine refrigerator
- ⑦ Built-in bar area featuring Italian millwork by Arclinea
- ⑧ Media display area in living room with Italian cabinetry from Arclinea



The Developer reserves the right to make modifications and changes to the information contained herein. Dimensions, sizes, specifications, layouts and materials are approximate only and subject to change without notice. E.&O.E.

**THE RESIDENCES  
ON MARINE**

# FEATURES AND SPECIFICATIONS

## IMPECCABLE ARCHITECTURE

- Architectural design by Karl Gustavson that pays homage to the community by incorporating elements of glass, steel, stone and wood-inspired metal panelling
- Built to LEED Silver equivalent boasting energy-efficiency, health indoor air quality, and sustainable materials and finishes
- A limited collection of only 16 stately-designed concrete homes nestled in the heart of Ambleside
- Three-storey concrete construction featuring four spacious retail spaces on the ground floor
- Private residents-only interior courtyard with cultivated landscaping and foliage by Eta Landscape Architecture
- Triple-pane\* aluminum windows on all Marine Drive facing homes

## ELEGANT INTERIORS

- Considerate and seamlessly designed homes by highly-respected local interior designer Cristina Oberti
- Thoughtfully included Italian custom millwork details by Arclinea:
  - Media display area
  - Built-in bar area with integrated 24" full-height Sub-Zero wine refrigerator\*
  - Solid imported Italian closet shelving and storage organizers
- Selection of two colour palettes curated by Cristina Oberti Interior Design:
  - Light
  - Dark
- Superior engineered hardwood flooring throughout
- Ceiling mount fan coil units provide heat and air conditioning for a comfortable interior environment year-round

## CHEF KITCHENS

- Imported flat-panel Italian cabinetry with soft-close drawers from Arclinea
- Solid polished quartz stone countertops
- Full-height marble backsplashes
- Professional-grade appliance package featuring seamless millwork integration:
  - 30" Sub-Zero refrigerator with double freezer drawers and ice maker
  - 30" Wolf stainless steel 4-burner gas cooktop
  - 30" Wolf black and stainless steel wall hood fan
  - 30" Wolf stainless steel wall oven
  - 30" Wolf stainless steel steam oven
  - 24" Asko high-efficiency dishwasher
- Polished chrome Kallista single-lever faucet with pullout hand spray
- Modern under-mount, single-bowl stainless steel Kohler sink
- Equipped pantries with full-extension pull out drawers\*
- Pullout waste and recycling bins

## OPULENT BATHROOMS

- Vanities made in Italy entirely clad in marble stone from SCIC
- Mirrored Italian import medicine cabinets with integrated LED lighting
- Solid polished marble countertops
- Sleek polished chrome Kohler faucets
- Contemporary Kohler under-mount rectangular vanity basin
- Invigorating polished chrome Kohler rain shower head with hand shower
- Italian marble mosaic tiled shower base in master ensuite
- Frameless glass shower enclosure in master ensuite
- Wall-mount Kohler flush toilet with soft close seat

- Soaker tub with Italian marble base surround
- Floor-to-ceiling Italian porcelain tiled walls
- Nuheat™ in-floor heating in all bathrooms

## UTILITIES

- 24" Asko side-by-side high-efficiency vented washer and dryer
- Laundry closets with custom counter and millwork shelving
- Porcelain tiled flooring in laundry closets
- Ultra-quiet automated roller window blinds
- Pre-wiring to allow for future technology additions including surveillance and alarm

## AMENITIES

- Welcoming residential lobby impeccably designed by Cristina Oberti Interior Design
- Secure FOB and key access to underground parking, storage and bicycle storage
- Elegantly appointed residential elevators with restricted floor access
- Video surveillance at all building entry points
- Underground car washing station
- Underground pet washing station
- Underground bicycle maintenance bench by bicycle storage

## WARRANTY

- 2-5-10 Home Warranty

## THE RESIDENCES ON MARINE

### RESIDENCE 207

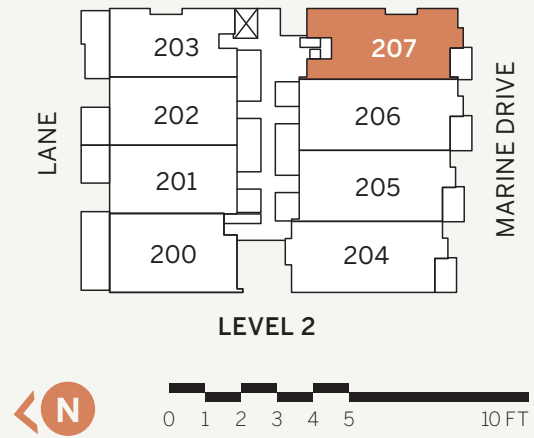
# RESIDENCE 207

## 2 Bedroom + 2 Bath

Indoor: 1138 sq.ft.

Outdoor: 87 sq.ft.

View: South



- ① 30" Wolf stainless steel 4-burner gas cooktop with 30" Wolf black and stainless steel hood fan
- ② 30" Wolf stainless steel wall oven and steam oven
- ③ 30" Sub-Zero integrated refrigerator with double freezer drawers and ice maker
- ④ 24" Asko integrated dishwasher
- ⑤ Italian-made pantries with full-extension pull out drawers by Arclinea
- ⑥ 30" Sub-Zero integrated full-height wine refrigerator
- ⑦ Built-in bar area featuring Italian millwork by Arclinea
- ⑧ Media display area in living room with Italian cabinetry from Arclinea



The Developer reserves the right to make modifications and changes to the information contained herein. Dimensions, sizes, specifications, layouts and materials are approximate only and subject to change without notice. E.&O.E.

**THE RESIDENCES  
ON MARINE**