

Penthouse 9

Two Bedroom

Total Living 2114 sf Indoor Living 1879 sf Outdoor Living 235 sf

Inviting and open, the floor to ceiling windows showcase majestic views of False Creek and Mount Baker. The open concept grand salon and Boffi chef's kitchen with custom BIG-designed Corian island are ideal for entertaining guests. The master bedroom with spacious dressing room and a marble clad five-piece ensuite will feel like you're relaxing in your own private spa.



westbank

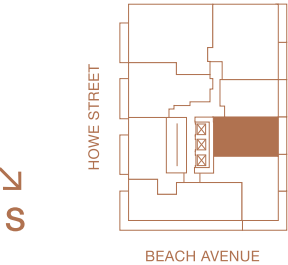
BIG

Renderings are representational only. E.& O.E.

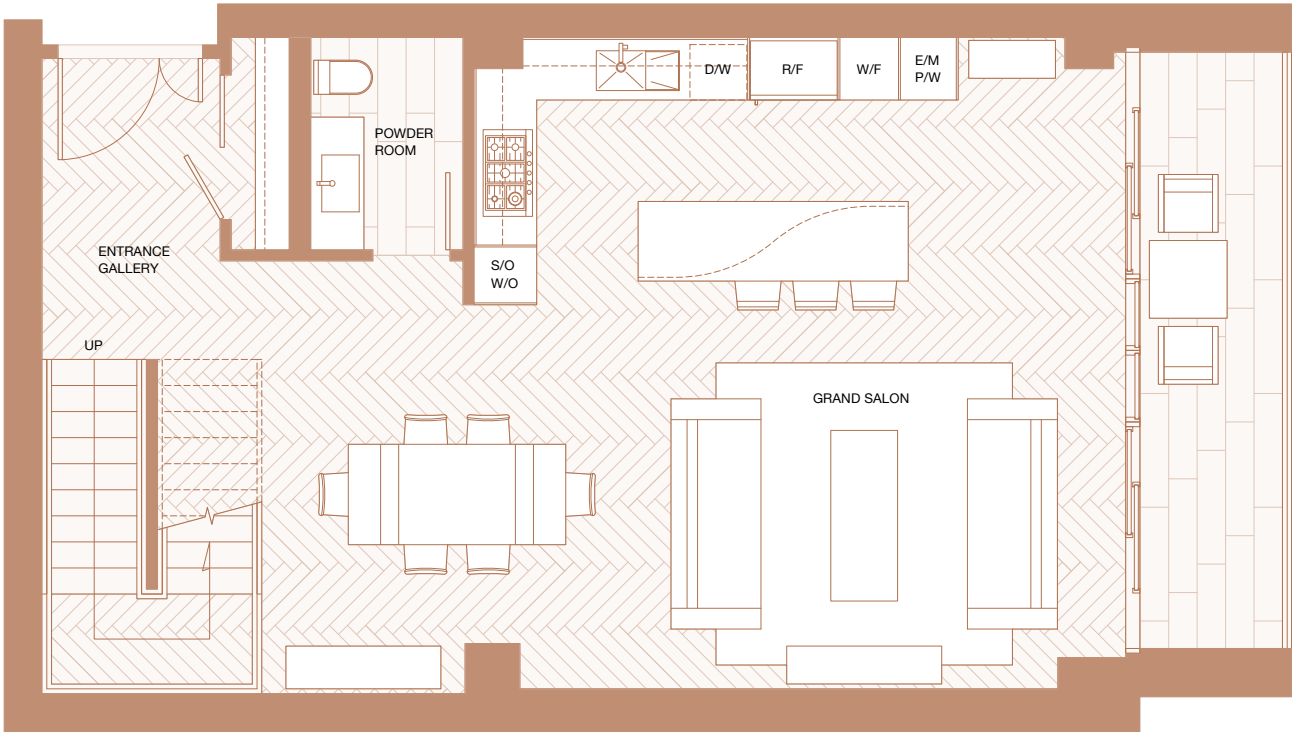
Lower Floor

Indoor Living 933 sf

Outdoor Living 116 sf



PENTHOUSE 09



VANCOUVER
HOUSE



west bank



Renderings are representational only. E.& O.E.

Upper Floor

Indoor Living 946 sf

Outdoor Living 119 sf

