

# Penthouse 9

Two Bedroom

Total Living 2114 sf   Indoor Living 1879 sf   Outdoor Living 235 sf

Inviting and open, the floor to ceiling windows showcase majestic views of False Creek and Mount Baker. The open concept grand salon and Boffi chef's kitchen with custom BIG-designed Corian island are ideal for entertaining guests. The master bedroom with spacious dressing room and a marble clad five-piece ensuite will feel like you're relaxing in your own private spa.



westbank BIG

DIMENSIONS, SIZES, SPECIFICATIONS, LAYOUTS AND MATERIALS ARE APPROXIMATE ONLY AND SUBJECT TO CHANGE WITHOUT NOTICE. E.&O.E.

VANCOUVER  
HOUSE

PENTHOUSE 9

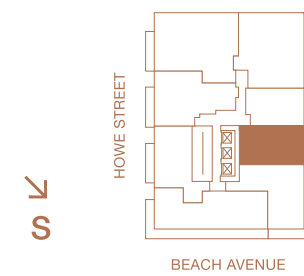
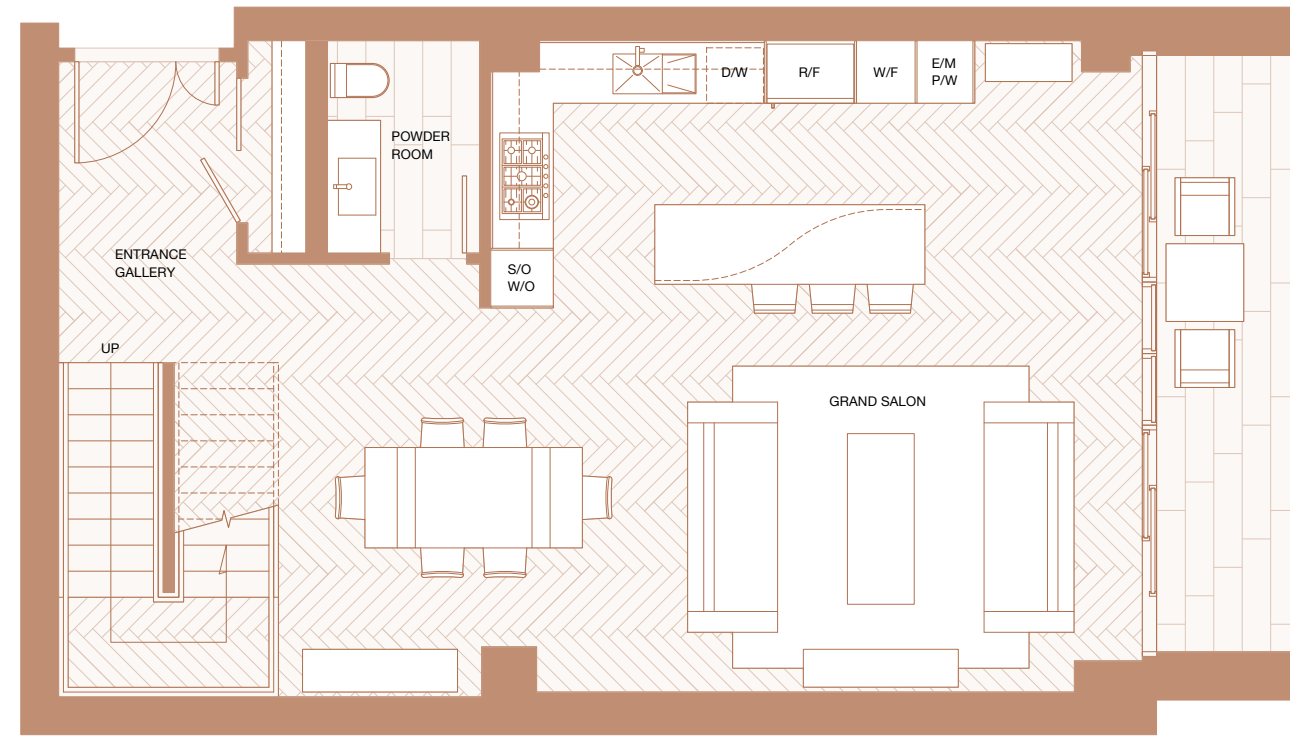




VANCOUVER HOUSE

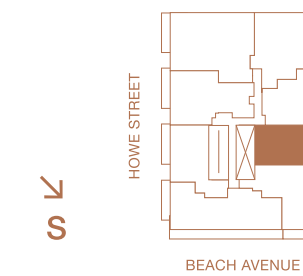
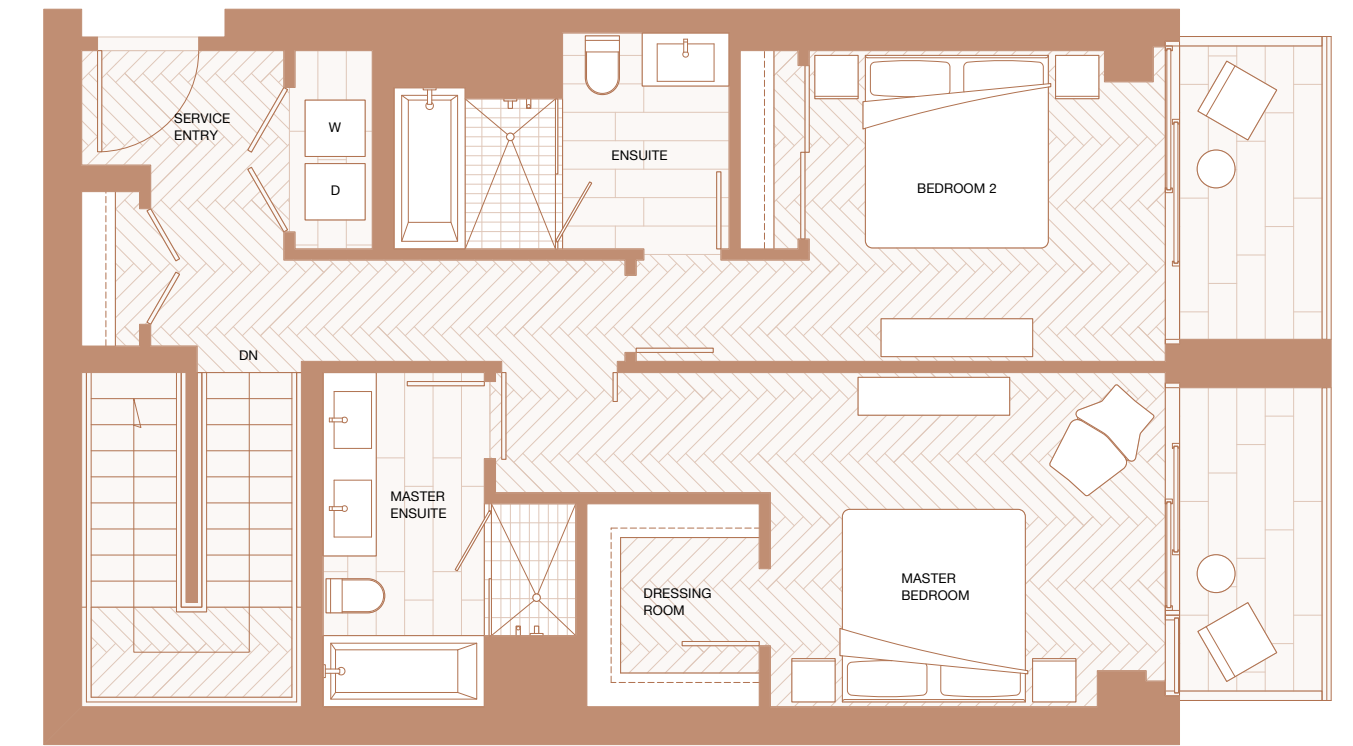
Lower Floor

Indoor Living 933 sf  
Outdoor Living 116 sf



Upper Floor

Indoor Living 946 sf  
Outdoor Living 119 sf



PENTHOUSE 09



west bank



Renderings are representational only. E.&O.E.