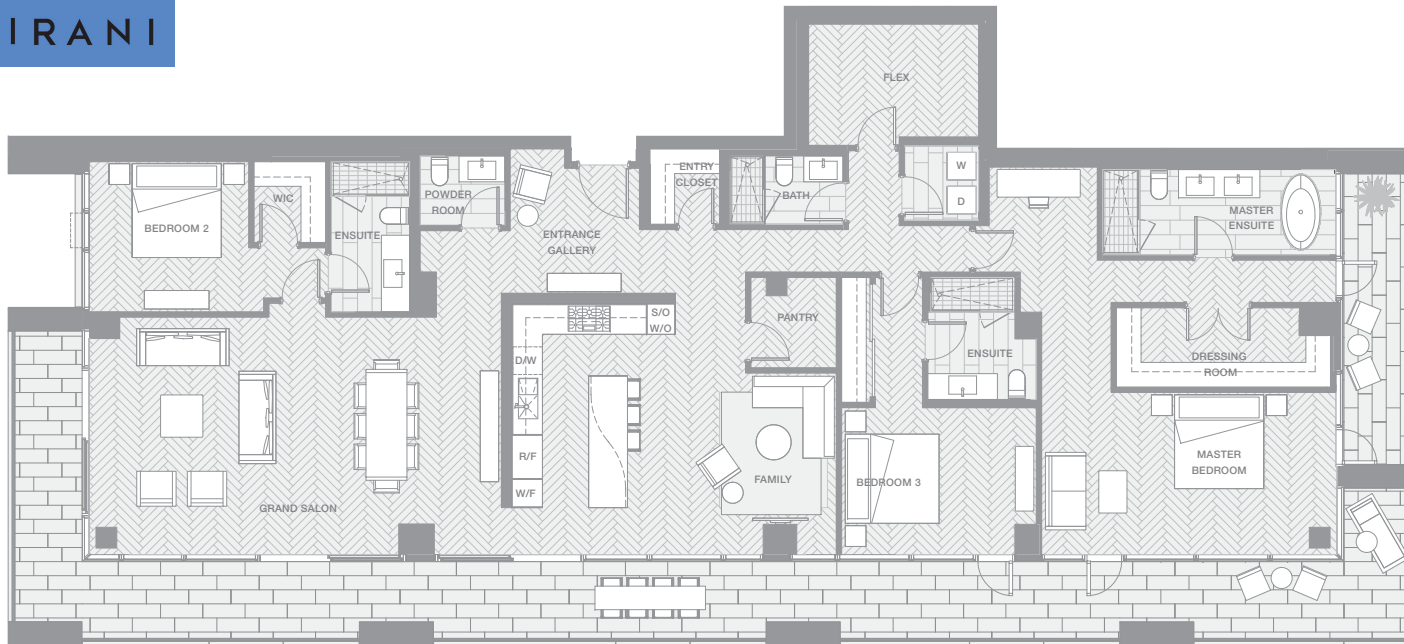


# VANCOUVER HOUSE



# ESTATE 5201

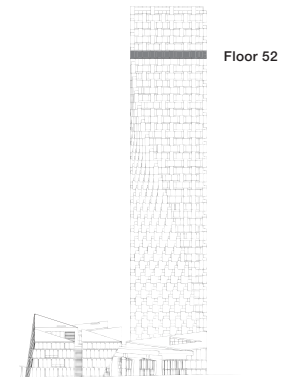
## THREE BEDROOM & FAMILY ROOM

**TOTAL LIVING 3575 SQ FT**

Indoor Living 2737 sq ft

Outdoor Living 838 sq ft

- Spanning entire south façade of Vancouver House with unobstructed views from False Creek to English Bay
- Boffi chef's kitchen featuring Miele appliances and custom BIG-designed Corian island
- Master bedroom with marble clad five-piece ensuite and dressing room
- Guest bedrooms with ensuites and a private flex space ideal for live-in housekeeper



west bank

BIG

THERE ARE NO REPRESENTATIONS OR WARRANTIES HEREIN, MADE BY THE DEVELOPER, ITS AGENTS OR EMPLOYEES, OR ANY OTHER PERSON ON BEHALF OF THE DEVELOPER, OTHER THAN THOSE CONTAINED IN A CONTRACT OF PURCHASE AND SALE BETWEEN A PURCHASER AND THE DEVELOPER AND IN THE DISCLOSURE STATEMENT FOR THE DEVELOPMENT TO THE EXTENT MANDATED BY LAW. IN PARTICULAR, THE PURCHASER ACKNOWLEDGES AND AGREES THAT THE MATERIALS, SPECIFICATIONS, DETAILS, DIMENSIONS, LAYOUT AND FLOORPLANS SET OUT HEREIN OR OTHERWISE VIEWED BY THE PURCHASER ARE APPROXIMATE AND SUBJECT TO CHANGE WITHOUT NOTICE.